

THE NWACC MILKWEED GARDEN



thenewsherald.com



Gardenstreetacademy.org



northjersey.com

*Our environmental mission...
Supporting the Monarch
Migration in Northwest
Arkansas*



Monarchjourney.com

*Project head - Nathan Murdock
Group project consultant - Dr. Chris Huggard, PhD*

*Presented by
Cameron Johnson - Gabby Villalpando
Carolyn Willcoxon
Fall 2017*



learner.org

Sustainability



What's so important about sustainability?

From paper to plastic, almost any material can be recycled. Recycling not only helps us maintain resources, it also helps stop products from being unnecessarily disposed of (sent to landfill) or irresponsibly disposed of (pollution)



Sustainability isn't just about recycling, it's also about improving the quality of the environment, repairing it, or preventing it from being damaged further.



The effect of pollution on Earth

Here are some various snapshots of environmental damage that has been done around the world.



Examples of what we have done to change things for the better or have done to fix our mistakes



What can we do here at NWACC to participate in sustainability?

Our group currently has a project focusing on monarch butterfly migration. We plan to plant milkweed north of NWACC. Milkweed attracts monarch butterflies and bees.

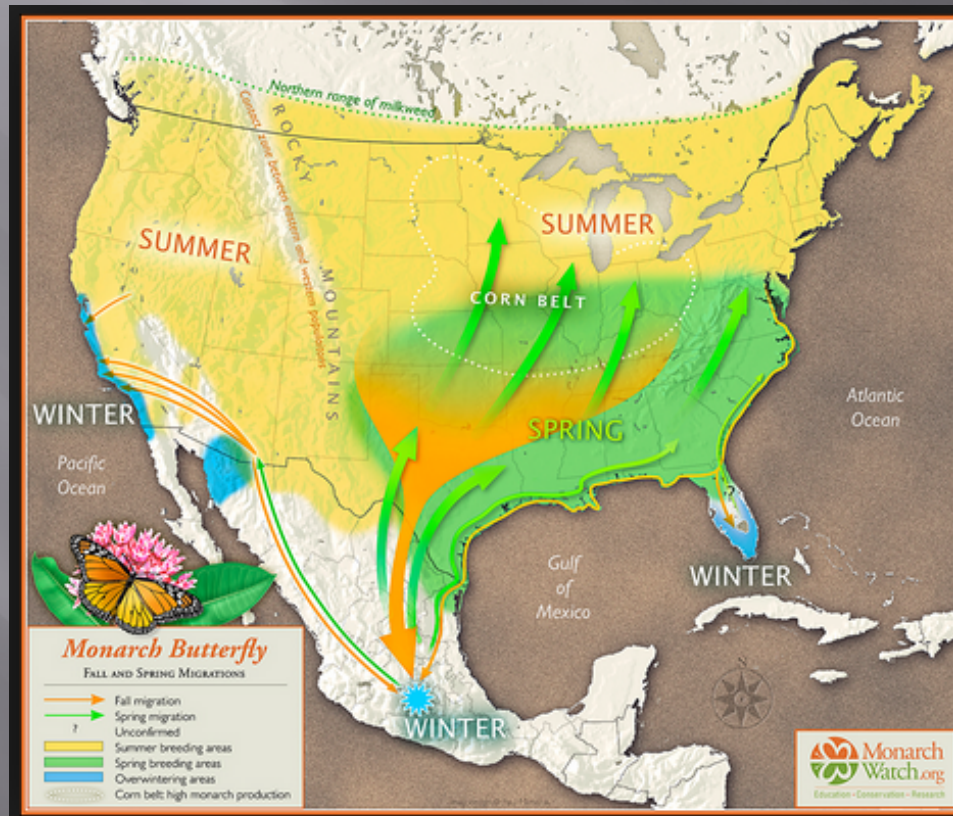


Milkweed Plants and Monarch Butterflies

Monarch butterflies migrate every spring, and milkweed plants are one of their primary food sources. Not only do these plants help the butterflies, they help other plants become pollinated as well.



THE MIGRATION PATH OF THE MONARCH BUTTERFLY

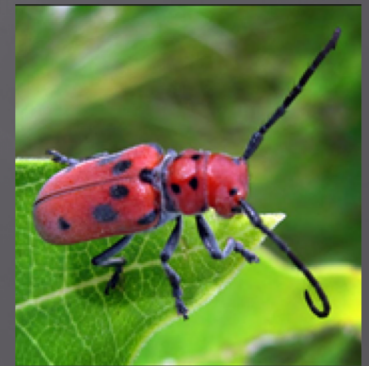


THE MILKWEED GARDEN SUPPORTS MORE THAN JUST MONARCHS.

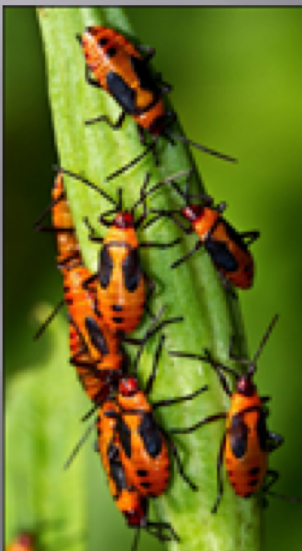


Butterflies.heuristron.net

Milkweed plants can be eaten if cooked correctly as well. Most species of milkweed contain minor poisons though, which keeps animals from eating them and keeps butterflies safe. Since Monarch butterflies often eat milkweed, they have built up a resistance to the plant, and also store much of the mild poison in their body to keep predators away. Maintaining and planting milkweed plants will make sure that the species can last for some time. The plant has been used to treat warts, help soften and remove gall and kidney stones, and can be used as a food source.



meerimage.com



Hiltonpond.org



Humanegardener.com



Whatsthatbug.com



Librarything.com

Monarch Butterfly

Cultural Significance in Mexico

In spring, we receive a migration of monarch butterflies from our southern boarder. Our neighboring country Mexico celebrates the Day of the Dead on November first, and that is also around the same time when the butterflies return.



The Monarch butterflies have always been a part of the Mexican culture. Because of their difficult journey, and as delicate as they are, their existence is seen as magical or even godly. They are said to represent the souls and spirits of ancestors coming back to visit. The soothing sounds of their fragile wings are therapy to the people who visit the monarch butterflies. Inspiring, and beautiful, the butterflies represent more than migration to the Mexican people.

“I always say we should all be more like monarch butterflies. They brave dangers, they work together, they can look after themselves, form teams, make group decisions about their survival, and their stamina is inspirational.” (Gloria Fermina Tavera Alonso Biosphere Director of the protected area of the monarch butterfly DW.com)

Significance in other territories



Tropical milkweed exists in some parts of the world. Some of the colors are just as fascinating as the plants we grow here in the U.S. As far as cultural significance, the milkweeds aren't of as much importance here.

Milkweed Cultural Significance in America

While the plant is not so much celebrated for the butterflies it attracts, it is studied for the effects it has on the environment. Many projects can be found throughout the country focusing on the plants, such as The Xerces Society, MJV Projects, and Monarchwatch.org.

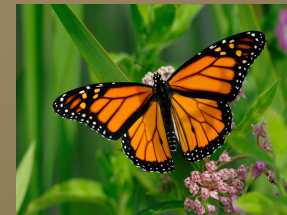


What will we accomplish with our milkweed sustainability project?



Lerner.org

At NWACC, we have designated an area to plant Milkweed for the purpose of demonstrating it's importance to the environment. While our impact here at Northwest Arkansas Community College will be minor, we hope to accomplish a spread of knowledge among the community so that these butterflies and plants are better understood. The more people that know about milkweed plants and their effect on the environment, the better chance we have at making the butterfly species sustainable.



blog.hmns.org