

NORTHWEST ARKANSAS COMMUNITY COLLEGE FALL 2008 FACT BOOK



OFFICE OF INSTITUTIONAL RESEARCH
TELEPHONE: (479) 619-4399 FAX: (479) 619-2229
E-MAIL: KPURDY@NWACC.EDU

TABLE OF CONTENTS



| | |
|----------------------------------|---|
| Table of Contents..... | 2 |
| Introduction and Highlights..... | 3 |

ORGANIZATION

| | |
|-------------------------------------|---|
| Board of Trustees..... | 4 |
| Administration..... | 4 |
| Organization Chart..... | 5 |
| History, Role and Scope..... | 6 |
| Strategic Plan Outline..... | 6 |
| Accreditation..... | 6 |
| Mission and Values Statements | 6 |
| College Facilities | 7 |

LEARNING PROGRAMS

| | |
|--|----|
| Degree Programs..... | 8 |
| Degrees and Certificates Awarded..... | 9 |
| Licensure Test Results..... | 10 |
| Student Semester Credit Hour by CIP..... | 11 |
| Number of Sections of Courses Offered..... | 13 |
| Number of Faculty..... | 13 |
| Credit Hours Taught - FT & PT Faculty..... | 14 |
| Corporate and Continuing Education..... | 15 |
| Adult Education..... | 16 |

STUDENTS

| | |
|--|----|
| 2007 and 2008 Headcount Summary Comparison..... | 17 |
| Historical Headcount Summary..... | 18 |
| Headcount Enrollment by Semester..... | 19 |
| Headcount by Enrollment Status..... | 20 |
| Headcount by Majors..... | 21 |
| Headcount by Race/Ethnicity..... | 22 |
| Headcount by Reason for Enrollment..... | 23 |
| Headcount by Residency..... | 24 |
| Washington County Facilities Enrollment..... | 25 |
| Headcount by Tuition Status..... | 26 |
| Student Semester Credit Hours by Semester..... | 27 |
| Student Semester Credit Hours by Tuition Status..... | 28 |
| Fall SSCH and FTE Enrollment..... | 29 |
| Annual SSCH and FTE Enrollment..... | 30 |
| High Schools in NWACC Service Area..... | 31 |
| Step Ahead..... | 32 |

REMEDIATION

| | |
|-------------------------------------|----|
| Remediated First Time Freshmen..... | 33 |
| Average ACT Composite Scores..... | 34 |

RETENTION

| | |
|---|----|
| Retention Rates for Full-Time, First-Time Freshmen..... | 35 |
| Retention Rates for All Students..... | 36 |

RESOURCES

| | |
|-------------------------------|----|
| Financial Aid..... | 37 |
| Financial Report Summary..... | 38 |

SUMMARY

| | |
|---------------------------------|----|
| Summary of Students Served..... | 39 |
| Glossary..... | 40 |

The NorthWest Arkansas Community College Fact Book for Fall 2008 is produced by the Office of Institutional Research and outlines enrollment, faculty, financial and other comprehensive information for NorthWest Arkansas Community College.

All enrollment data in this document were based on the enrollment of the college at the end of the eleventh class day. All fiscal year data were collected as of June 30th, 2008. The definitions and guidelines used to compile this information are provided by the Integrated Postsecondary Education Data System (IPEDS) and the Arkansas Department of Higher Education. Definitions and guidelines unique to the institution will be noted on individual tables.

Copies of this document may be found in the offices of each College Cabinet Member, in the Office of Institutional Research and on the web at www.nwacc.edu/institutionalresearch.

The Fact Book will be updated prior to December 1 each year.

Inquiries and comments regarding this document may be directed to the Office of Institutional Research, NorthWest Arkansas Community College, One College Drive, Bentonville, AR 72712, by telephone at (479) 619-4399, or by e-mail to kpurdy@nwacc.edu or rtompkins1@nwacc.edu

HIGHLIGHTS FALL 2008

- Enrollment topped 7,000 for the first time in school history – 7,216 students.
- Headcount increased 11.5% and SSCH increased 14%.
- Hispanic students comprise 10.6% of our student body with the highest retention rate on campus of 55%.
- 1,340 first-time freshmen make up 18.6% of our student body.
- To earn a degree or earn credits to transfer is the reason 76% of students attend NWACC.
- The majority of NWACC students (92%) live in Benton and Washington Counties.
- Over 20% of 2008 High School graduates from Rogers, Bentonville, Springdale and Elkins enrolled at NWACC this fall.
- The remediation rate for Math fell to the lowest it has been since 2000.
- The fall-to-fall retention rate of all students (except 2008 NWACC graduates and high school students) rose to 45.6%. The national average is 53.7% for 2-year colleges.
- 35% of our students received Federal and/or State Grant Financial Aid.
- For Academic Year 2008 (July 1, 2007 to June 30, 2008) NWACC served over 17,000 students through college-credit classes, workforce development classes, community education, adult education, as well as secondary students through the Regional Technology Center.

BOARD OF TRUSTEES

Members of the Board of Trustees of NorthWest Arkansas Community College were initially appointed by former Governor Bill Clinton. Board members are now elected by position in groups of three each even numbered year at the general election.

Board Members and the city they represent:

| | | |
|------------|----------------------|--|
| Chair | Mr. Coleman Peterson | Hollis Enterprises, LLC Bentonville |
| Vice Chair | Dr. Les Carnine | Retired School Superintendent Rogers <i>Elected to the Arkansas House of Representatives Replacement to be appointed by Gov. Beebe</i> |
| Secretary | Mr. Robert Teague | Boyer, Schrantz, Rhoads & Teague, PLC Rogers |
| | Ms. Joan Clifford | Past Chair, Community Volunteer Bentonville |
| | Mr. Johnny Haney | Alliance Enterprises Bentonville |
| | Ms. Krista Khone | Bentonville/Bella Vista Chamber of Commerce Rogers <i>Term Expires 12/31/08</i> |
| | Mr. Mark Lundy | Past Chair, Lundy Allard & Co., PLLC Rogers |
| | Mr. Joe Spivey | Liberty Bank of Arkansas Rogers |
| | Mr. Alex Vasquez | Wal-Mart Stores, Inc. Rogers |
| | Mr. Mike Shupe | CEI Engineering Rogers <i>Term begins 01/01/09</i> |

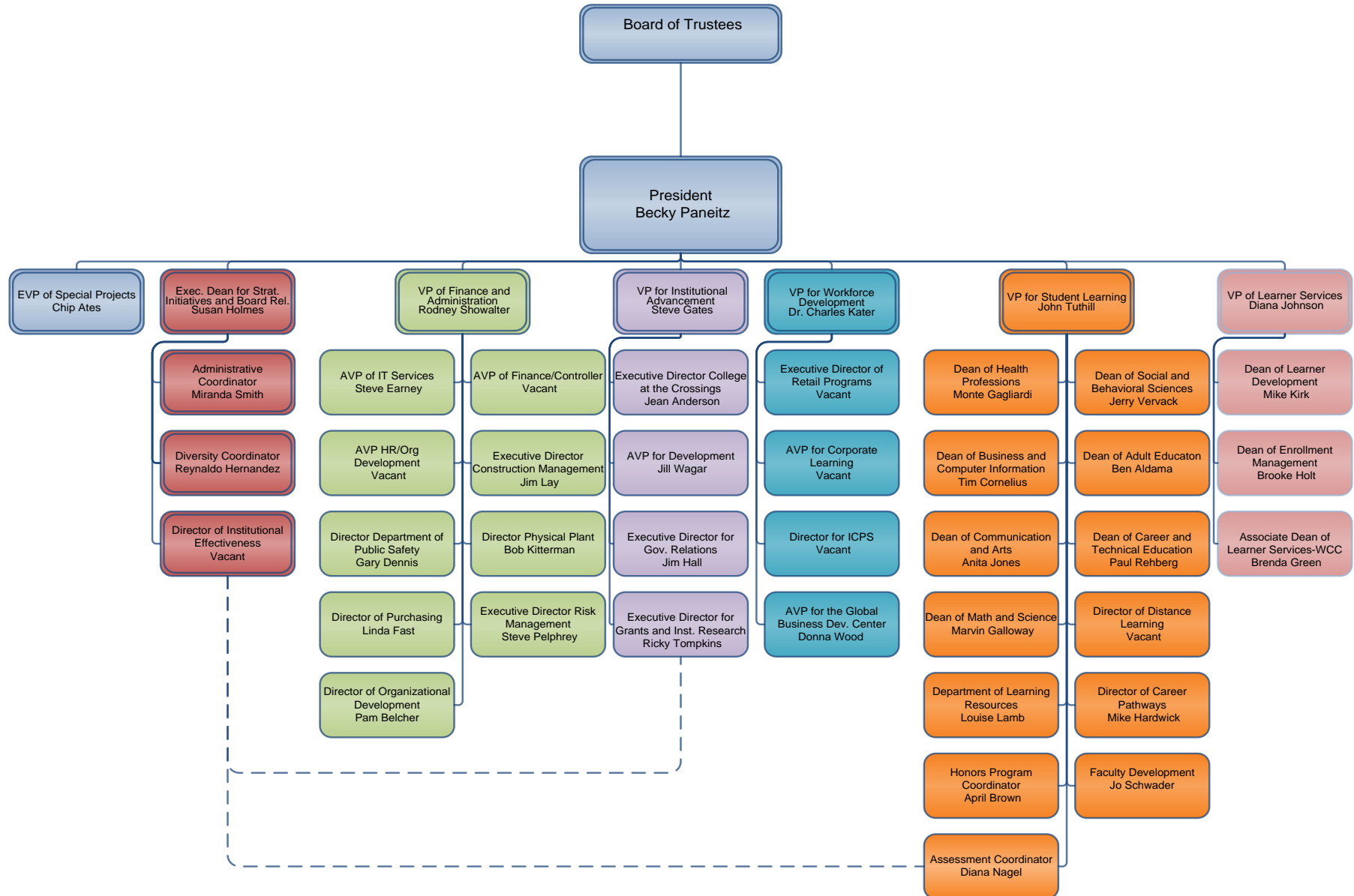
ADMINISTRATION

| | |
|--|----------------------|
| President | Dr. Becky Paneitz |
| Executive Dean for Strategic Initiatives & Board Relations | Dr. Susan Holmes |
| Vice President for Advancement | Dr. Stephen Gates |
| Vice President for Finance and Administration | Dr. Rodney Showalter |
| Vice President for Learner Services | Dr. Diana Johnson |
| Vice President for Learning | Dr. John Tuthill |
| Vice President for Corporate Learning | Dr. Charles Kater |
| <i>Begins January 5, 2009</i> | |



NWACC
NORTHWEST ARKANSAS
COMMUNITY COLLEGE

2008-2009 NWACC Organizational Leadership Structure



HISTORY, ROLE AND SCOPE

The NorthWest Arkansas Community College District was authorized on August 15, 1989, when voters in the Rogers and Bentonville public school districts passed a 3-mil tax. The first classes were attended by more than 1,200 students in the fall of 1990 at high schools, chambers of commerce, municipal and leased facilities throughout the district.

Burns Hall opened its doors to just more than 2,400 students in August 1995. The main building is a multipurpose facility on 131 acres of land at Exit 86 of Interstate 540 on the Rogers and Bentonville, Arkansas, city limits. The 181,000 square-foot facility houses the College, Pauline Whitaker Library, lecture halls, laboratories for computers, science, nursing and allied health; music and art studios, and faculty and administrative offices.

Day, evening, and weekend classes are offered at the Burns Hall, as well as at locations throughout the service district. At the College's Shewmaker Center for Workforce Technologies, a 44,000 square-foot facility on Southeast Eagle Way, west of Burns Hall, customized programs are offered to area businesses. The College's Adult Education Program, which serves over 3,000 students a year, is located in Rogers. Opened in Bella Vista in the Fall of 2004 was College at the Crossings. The Regional Technology Center, an area secondary education center, opened August 2005. A new student center and parking garage opened in the Spring of 2007.

In serving a dynamic region of the state, NorthWest Arkansas Community College recognizes the importance of providing varied and abundant opportunities for learning.

NWACC is a comprehensive, learning-centered two-year college dedicated primarily to meeting the educational needs of its service area. NWACC offers a comprehensive education program including, but without limitation, technical occupational programs, freshman and sophomore programs for students to transfer to four-year colleges, specialty courses, professional continuing education courses, community enrichment classes, and business and industry training to meet the needs of the emerging and existing workforce. Part-time and full-time students are valued equally.

NWACC MISSION STATEMENT

NorthWest Arkansas Community College is a comprehensive, public two-year college that serves and strengthens the community through learning for living.

NWACC VALUES STATEMENT

In order to accomplish our mission and goals we

- Cherish academic, professional and personal integrity
- Facilitate continuous learning for students and stakeholders
- Value human resources over physical resources
- Develop the potential of the individual to achieve excellence
- Anticipate and respond to needs by encouraging innovative ideas and technologies
- Respect our differences and view them as a strength
- Advance knowledge through individual and team challenges

ENDS & GOALS - 2008-2010

NorthWest Arkansas Community College will become a premier educational provider in northwest Arkansas by developing a responsive educational delivery system customized to the needs of learners and receiving organizations.

1. **For the learner community we will:**
provide expanded access to high-quality educational opportunities for the population in general, especially for under-served learners in all age groups who are disconnected by choice or circumstance.
2. **For the business community we will:**
enhance partnerships and collaborations with business and industry.
3. **For the owner community (taxpayers) we will:**
enhance its capacity to diversify NWACC's resource base and function as a catalyst for comprehensive regional planning and development.
4. **For the pre-kindergarten through grade 16 community we will:**
provide support and leadership for partnerships with area educational institutions to provide learners with seamless opportunities preparing them for college and careers.
5. **For the college community we will:**
align the organizational infrastructure through continuous quality improvement and commitment to the principles of the Learning College.

Date Approved: April 10, 2006
Revised: August 2008

ACCREDITATION

In February 2000 NorthWest Arkansas Community College was granted continued accreditation for 10 years by The Higher Learning Commission and is a member of the North Central Association of Schools and Colleges, 312-263-0456, www.ncahigherlearningcommission.org.

In July 2006, NWACC was approved for the Academic Quality Improvement Program (AQIP) process of re-accreditation. AQIP infuses the principles and benefits of continuous improvement into the culture of colleges and universities by providing an alternative process through which an already-accredited institution can maintain its accreditation from the Higher Learning Commission.

Main Campus

NWACC Burns Hall & Student Center
One College Drive
Bentonville, AR 72712
479-636-9222 / 1-800-995-6922

Shewmaker Center For Workforce Technologies

1100 S.E. Eagle Way
Bentonville, AR 72712
479-936-5175

Adult Education Center

2800 North Second Street
Rogers, AR 72756
479-986-6911

College at the Crossing

1801 Forest Hills Boulevard
Highlands Crossing Center
Bella Vista, AR 72714
479-855-1903

Regional Technology Center

2305 Old Farmington Road
Fayetteville, AR 72701
479-444-3060

Washington County Center

Central Plaza
693 White Road, Suite B
Springdale, AR 72764
479-927-3330
479-936-5131

Corporate Learning Fayetteville

4004 N College Ave
Fayetteville, AR 72701
479-718-7571

Western Benton County RTC*

201 South Giles
Gentry, AR 72734

*Regional Technology Center and Adult Education Department satellite branch on the campus of Gentry Public Schools. Opened August 20, 2007.

Associate of Applied Science (AAS) Degrees

Two-year degree designed for students seeking concentrated training in a chosen career area to enter the workforce directly after graduation.

| | |
|--|---|
| Aviation Technology | Criminal Justice |
| Business Management | Early Childhood Education |
| Accounting Option | Electronics Technology |
| Banking & Finance Option | EMT-Paramedic |
| Entrepreneurship Option | Environmental & Regulatory Science |
| General Business Option | Environmental Mgmt Option |
| Logistics Management Option | Safety, Health & Hazardous Materials Mgmt |
| Retail Option | Fire Science |
| Computer Aided Design | Graphic Design |
| Architectural Design Option | Homeland Security & Emergency Mgmt |
| Civil Design Option | Law Enforcement |
| Landscape Design Option | Legal Assistant/Paralegal |
| Computer Information Systems | Nursing |
| Computer Networking Option | Physical Therapist Assistant |
| Computer Programming Option | Respiratory Therapy |
| Information Mgmt & Applications Option | |

Transfer Degrees

Associate of Arts (AA)

The Associate of Arts degree is a transfer degree designed for the student who wishes to major in the liberal arts. Courses taken in the approved core curriculum will also apply toward baccalaureate degree requirement at most four-year institutions.

Associate of Science (AS)

The Associate of Science Degree is a transfer degree designed for the student who wishes to major in engineering, agriculture, or the sciences. NWACC offers a general AS degree as well as one with emphasis in one of these areas:

| | |
|--|--|
| <i>Agriculture, Food and Life Sciences</i> | <i>Science Emphasis</i> |
| <i>Aviation Science</i> | <i>Walton College of Business Option</i> |
| <i>Business Emphasis</i> | |

Associate of Arts in Teaching (AAT)

The Associate of Arts Teaching degree is a transfer degree which comprises the general education program in the education field. Courses taken in the approved core curriculum will also apply toward baccalaureate degree requirement at most four-year institutions. This degree concentrates in the P - 4 Education area.

Associate and Certificate of General Studies

The General Studies program is designed for students who wish to tailor a program to meet their personal educational enrichment goals. This is not intended to transfer.

Technical Certificate Programs

Accounting Technology
 Aviation Maintenance Airframe or Powerplant
 Business Management
 Culinary Arts
 EMT Paramedic
 Entrepreneurship
 Environmental and Regulatory Science
 General Business
 Logistics Management
 Paraeducators of Special Needs Learners

Certificate of Proficiency Programs

Aviation Maintenance General
 Aviation Management
 Computer Aided Design
 Architectural Option
 Civil Option
 Landscape Design Option
 Child Development Associate (CDA)
 Crime Prevention and Corrections
 Early Childhood Development Specialist
 EMT Basic
 Environmental Management/GIS Technician
 Forensic Science
 Homeland Security & Emergency Management
 Hospitality Management
 Law Enforcement
 Retail Management
 Safety & Health
 Tax Specialist

DEGREES AND CERTIFICATES AWARDED SUMMARY

BY ACADEMIC YEAR



| Degrees Awarded | 2003-2004 | 2004-2005 | 2005-06 | 2006-07 | 2007-08 |
|---|----------------|------------|------------|------------|------------|
| AAS Degrees | | | | | |
| Aviation | | 1 | 2 | | 1 |
| Business Management | 18 | 20 | 21 | 15 | 17 |
| Computer Aid Drafting and Design | 4 | 11 | 2 | | 7 |
| Computer Information Systems | 9 | 10 | 11 | 11 | 15 |
| Criminal Justice | 2 | 7 | 6 | 5 | 11 |
| Early Childhood Education | 3 | 3 | 2 | 4 | 5 |
| Electronic Technology | | | | | 1 |
| Emergency Medical Technology-Paramedic | 6 | 1 | 2 | 4 | 3 |
| Environmental Reg, Safety, and Haz Mat | 4 | 2 | 1 | 3 | 5 |
| Fire Science Administration and Tech | 6 | 1 | 7 | 1 | 10 |
| Graphic Design | 6 | 10 | 10 | 9 | 6 |
| Homeland Security & Emergency Mgmt | - | - | - | - | 2 |
| Legal Assistance/Paralegal Studies | 1 | 3 | 8 | 7 | 10 |
| Nursing | 28 | 40 | 27 | 48 | 64 |
| Physical Therapy Assistant | 4 | 6 | 6 | 10 | 8 |
| Respiratory Therapist | 2 | 14 | 7 | 19 | 12 |
| TOTAL AAS Degrees | 93 | 129 | 112 | 136 | 177 |
| General Studies | | | | | |
| General Education | AGS | - | - | 13 | 15 |
| TOTAL AGS Degrees | | | 13 | 15 | 13 |
| Transfer Degrees | | | | | |
| General Education | AA | 52 | 41 | 54 | 63 |
| | AS | 81 | 85 | 116 | 88 |
| | AS-Agriculture | | 2 | | 1 |
| | AAT (Teaching) | - | - | - | 4 |
| TOTAL AA & AS Degrees | | 133 | 128 | 170 | 156 |
| Certificates | | | | | |
| Aviation Maintenance Airframe | | | 7 | 10 | 3 |
| Aviation Maintenance Powerplant | | | 8 | 5 | 3 |
| Aviation Maintenance | | | 18 | | 1 |
| Aviation Management | | | 1 | | |
| CAD:Architecture | 4 | 2 | 1 | 7 | 6 |
| CAD:Engineering | | 2 | 2 | | |
| Child Dev Associate (CDA) Training | - | - | - | - | 1 |
| Crime Prevention & Corrections | - | - | - | 1 | 2 |
| Culinary Arts | - | - | - | - | 2 |
| Early Childhood Dev Specialist | - | - | - | - | 10 |
| Emergency Medical Technology - Basic | 47 | 51 | 73 | 52 | 60 |
| Emergency Medical Tech - Paramedic | 2 | 2 | 10 | 11 | 16 |
| Environmental Science-Tech Certificate | 6 | 3 | 1 | | 3 |
| Environmental Science-Cert of Proficiency | 9 | 2 | 1 | 1 | |
| Forensic Science | - | - | - | - | 3 |
| General Studies | - | - | 1 | | 25 |
| Homeland Security & Emergency Mgmt | - | - | - | - | 2 |
| Hospitality Management | - | - | - | 8 | 1 |
| Law Enforcement | - | - | - | 1 | 1 |
| Marketing Analyst # | 48 | 52 | # | - | - |
| Safety & Health | - | - | - | - | 4 |
| TOTAL Certificates | 116 | 114 | 123 | 96 | 143 |
| Total Degrees and Certificates* | 342 | 371 | 418 | 403 | 610 |
| GED's | 217 | 236 | 344 | 380 | 462 |

*NOTE: This table reflects only students who completed degrees between July 1 and June 30 of each academic year

#moved to non-credit

LICENSURE AND CERTIFICATION PASS RATES



| Year | NWACC Exam Takers | # of First Time NWACC Testers Passing Exam | NWACC Pass Rate Percentage | State Average | National Average |
|--|--------------------------|--|----------------------------|---------------|------------------|
| National Council Licensure Examination - Registered Nurse | | | | | |
| 2004 | 28 | 26 | 92.9% | 92.0% | 90.2% |
| 2005 | 30 | 27 | 90.0% | 88.7% | 86.2% |
| 2006 | 27 | 26 | 96.3% | 87.9% | 87.5% |
| 2007 | 48 | 47 | 97.9% | 90.5% | 87.6% |
| 2008 | Available late fall 2008 | | | | 88.2% |
| National Registry of EMT Paramedic Practical Examination | | | | | |
| 2004 | 7 | 6 | 85.7% | 24.0% | 64.0% |
| 2005 | 8 | 8 | 100.0% | 48.0% | 64.0% |
| 2006 | 17 | 16 | 94.0% | 68.0% | 68.0% |
| 2007 | 11 | 9 | 81.8% | 36.0% | 65.0% |
| 2008 | 11 | 11 | 100.0% | 33.0% | 63.0% |
| Arkansas Fire Academy Certification Examination | | | | | |
| 2004 | 4 | 4 | 100.0% | - | - |
| 2005 | 8 | 8 | 100.0% | - | - |
| 2006 | 7 | 7 | 100.0% | - | - |
| 2007 | 12 | 11 | 91.7% | - | - |
| 2008 | 6 | 6 | 100.0% | - | - |
| National Physical Therapist Assistant Exam (NTPAE) | | | | | |
| 2004 | 4 | 4 | 100.0% | 73.0% | 73.0% |
| 2005 | 6 | 6 | 100.0% | 72.1% | 73.7% |
| 2006 | 6 | 6 | 100.0% | 65.1% | 74.6% |
| 2007 | 11 | 11 | 100.0% | 82.1% | 81.2% |
| 2008 | Available Spring 2009 | | | | |
| Registered Respiratory Therapist Exam | | | | | |
| 2004 | 1 | 1 | 100.0% | - | 64.8% |
| 2005* | 13 | 8 | 61.5% | - | 79.3% |
| 2006 | 9 | 5 | 55.6% | - | 79.6% |
| 2007 | 17 | 9 | 52.9% | - | 79.4% |
| 2008 | 13 | 10 | 76.9% | - | 79.4% |

*Changed programs and tests from CRT (Certified) to RRT (Registered)

STUDENT SEMESTER CREDIT HOUR PRODUCTION BY DEPARTMENT

BY ACADEMIC YEAR

| CIP Code | 2003-04 | | 2004-05 | | 2005-06 | | 2006-07 | | 2007-08 | | % Growth | |
|--|---------|---------------------|---------|---------------------|---------|---------------------|---------|---------------------|---------|---------------------|----------|-----------|
| | SSCH | % of Total Cr Hours | SSCH | % of Total Cr Hours | SSCH | % of Total Cr Hours | SSCH | % of Total Cr Hours | SSCH | % of Total Cr Hours | One Year | Five Year |
| 1 Agricultural Sciences | 114 | 0.13% | 129 | 0.13% | 145 | 0.14% | 229 | 0.21% | 260 | 0.21% | 13.5% | 128.1% |
| 32 Basic Skills | 10,068 | 11.51% | 9,940 | 10.34% | 9,665 | 9.54% | 9,841 | 9.16% | 11,769 | 9.43% | 19.59% | 16.90% |
| Prep for College Reading, College Reading | | | | | | | | | | | | |
| College Intensive English Program | | | | | | | | | | | | |
| Foun of Writing, Study Skills | | | | | | | | | | | | |
| Pre Algebra, Beginning Algebra, | | | | | | | | | | | | |
| Intermediate Algebra | | | | | | | | | | | | |
| 3-26 Biological Sciences/ | | | | | | | | | | | | |
| Life Sciences | 7,209 | 8.24% | 7,893 | 8.21% | 8,744 | 8.63% | 9,336 | 8.69% | 11,996 | 9.61% | 28.49% | 66.40% |
| Biology, Botany, Environmental | | | | | | | | | | | | |
| Science, Life Science | | | | | | | | | | | | |
| 52 Business Management & | | | | | | | | | | | | |
| Administration Services | 9,951 | 11.38% | 9,214 | 9.59% | 9,118 | 9.00% | 9,398 | 8.75% | 10,422 | 8.35% | 10.90% | 4.73% |
| Accounting, Economics | | | | | | | | | | | | |
| Banking and Finance, | | | | | | | | | | | | |
| Business Adm, Business Law | | | | | | | | | | | | |
| Hospitality Mgmt, Mkt Analyst, | | | | | | | | | | | | |
| Statistics, Office Systems Support | | | | | | | | | | | | |
| 9 Communications | 405 | 0.46% | 396 | 0.41% | 399 | 0.39% | 390 | 0.36% | 345 | 0.28% | -11.54% | -14.81% |
| Communications, Journalism | | | | | | | | | | | | |
| 11 Computer & | | | | | | | | | | | | |
| Information Services | 5,813 | 6.65% | 6,132 | 6.38% | 5,400 | 5.33% | 5,862 | 5.46% | 7,173 | 5.75% | 22.36% | 23.40% |
| Computer Information, | | | | | | | | | | | | |
| CISCO, Networking | | | | | | | | | | | | |
| 13-31-34 Education/Physical Education | 1,892 | 2.16% | 2,077 | 2.16% | 2,390 | 2.36% | 2,649 | 2.47% | 3,006 | 2.41% | 13.48% | 58.88% |
| Health Science, | | | | | | | | | | | | |
| Curriculum & Instruction, | | | | | | | | | | | | |
| Physical Education | | | | | | | | | | | | |
| 15-47-48-49 Engineering & | | | | | | | | | | | | |
| Related Technology | 1,396 | 1.60% | 1,548 | 1.61% | 2,557 | 2.52% | 2,583 | 2.41% | 2,275 | 1.82% | -11.92% | 62.97% |
| Aviation Science, CAD, Health & Safety | | | | | | | | | | | | |
| 23 English Language & | | | | | | | | | | | | |
| Literature/Letters | 11,937 | 13.65% | 13,668 | 14.22% | 13,923 | 13.74% | 15,636 | 14.56% | 17,445 | 13.98% | 11.57% | 46.14% |
| Communications, English | | | | | | | | | | | | |
| 16 Foreign Language & | | | | | | | | | | | | |
| Literatures | 1,587 | 1.81% | 1,893 | 1.97% | 1,929 | 1.90% | 1,890 | 1.76% | 2,121 | 1.70% | 12.22% | 33.65% |
| Foreign Language, French, German, Spanish | | | | | | | | | | | | |

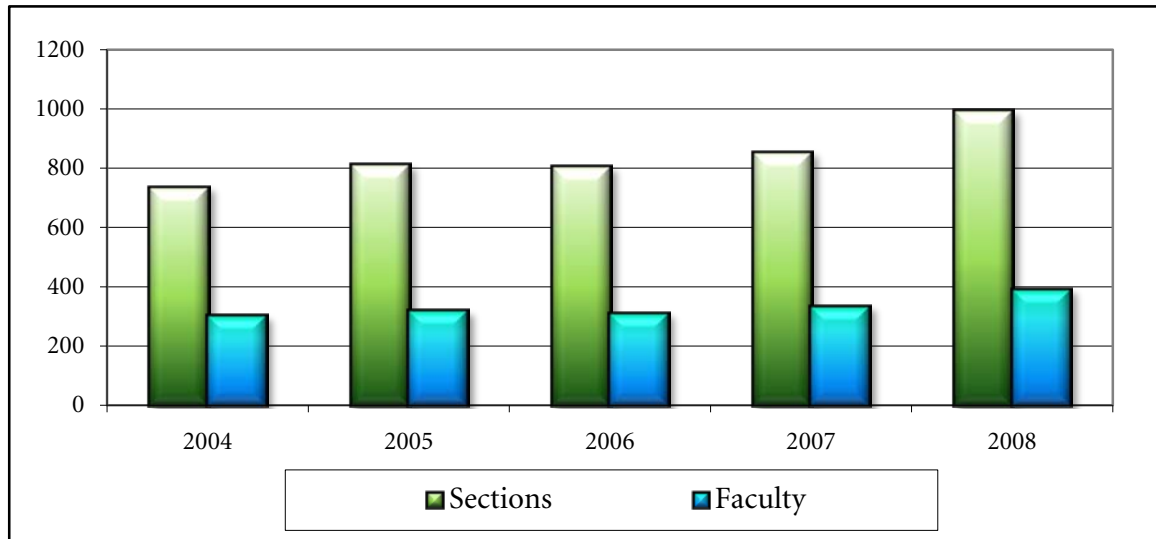
SSCH BY DEPT - CON'T

| | 2003-04 | | 2004-05 | | 2005-06 | | 2006-07 | | 2006-07 | | % Growth | |
|---|---------|---------------------|---------|---------------------|---------|---------------------|---------|---------------------|---------|---------------------|----------|-----------|
| | SSCH | % of Total Cr Hours | SSCH | % of Total Cr Hours | SSCH | % of Total Cr Hours | SSCH | % of Total Cr Hours | SSCH | % of Total Cr Hours | One Year | Five Year |
| 51 Health Professions & Related Services Allied Health Sciences, Emergency Medical Services, Nursing, Physical Therapy, Respiratory Care | 3,328 | 3.80% | 3,882 | 4.04% | 4,941 | 4.87% | 5,942 | 5.53% | 5,891 | 4.72% | -0.86% | 77.01% |
| 22 Law and Legal | 166 | 0.19% | 488 | 0.51% | 511 | 0.50% | 616 | 0.57% | 694 | 0.56% | 12.66% | 318.07% |
| 24 Liberal Arts & Science & General Studies General Studies, Humanities | 138 | 0.16% | 132 | 0.14% | 123 | 0.12% | 138 | 0.13% | 219 | 0.18% | 58.70% | 58.70% |
| 27 Mathematics Mathematics | 7,981 | 9.12% | 9,294 | 9.67% | 10,582 | 10.44% | 11,508 | 10.72% | 13,702 | 10.98% | 19.06% | 71.68% |
| 38 Philosophy and Religion Philosophy | 1,407 | 1.61% | 1,815 | 1.89% | 2,058 | 2.03% | 2,100 | 1.96% | 2,487 | 1.99% | 18.43% | 76.76% |
| 40 Physical Sciences Chemistry, Geology, Physical Science, Physics | 3,630 | 4.15% | 4,265 | 4.44% | 4,537 | 4.48% | 5,115 | 4.76% | 5,207 | 4.17% | 1.80% | 43.44% |
| 43 Protective Services Criminal Justice, Fire Services | 1,578 | 1.80% | 1,281 | 1.33% | 1,256 | 1.24% | 1,354 | 1.26% | 1,634 | 1.31% | 20.68% | 3.55% |
| 42 Psychology Psychology | 3,495 | 4.00% | 4,338 | 4.51% | 4,977 | 4.91% | 5,079 | 4.73% | 6,288 | 5.04% | 23.80% | 79.91% |
| 44-45-54 Social Sciences and History Anthropology, Geography, History, Political Science, Social Work, Sociology, Western Civilization | 9,847 | 11.26% | 11,668 | 12.14% | 11,659 | 11.50% | 11,130 | 10.36% | 14,038 | 11.25% | 26.13% | 42.56% |
| 50 Visual and Performing Arts Art History, Art, Drama, Music | 4,841 | 5.53% | 5,296 | 5.51% | 5,522 | 5.45% | 5,720 | 5.33% | 6,789 | 5.44% | 18.69% | 40.24% |
| 19-20 Vocational Home Economics Early Childhood Education | 683 | 0.78% | 779 | 0.81% | 918 | 0.91% | 879 | 0.82% | 1,054 | 0.84% | 19.91% | 54.32% |
| Total SSCH | 87,466 | | 96,128 | | 101,354 | | 107,395 | | 124,815 | | 16.2% | 42.7% |

NUMBER OF SECTIONS OF COURSES OFFERED / NUMBER OF FACULTY

FALL SEMESTER

| Fall | Sections Offered | One Year % Growth | Five Year % Growth | Number of Teaching Faculty | One Year % Growth | Five Year % Growth | Average Class Size |
|------|------------------|-------------------|--------------------|----------------------------|-------------------|--------------------|--------------------|
| 2004 | 736 | 9.4% | 22.9% | 301 | 12.7% | 23.9% | 18.8 |
| 2005 | 810 | 10.1% | 32.1% | 319 | 6.0% | 29.7% | 17.8 |
| 2006 | 804 | -0.7% | 21.6% | 311 | -2.5% | 20.5% | 18.8 |
| 2007 | 853 | 6.1% | 26.7% | 333 | 7.1% | 24.7% | 19.8 |
| 2008 | 993 | 16.4% | 34.9% | 391 | 17.4% | 29.9% | 19.6 |

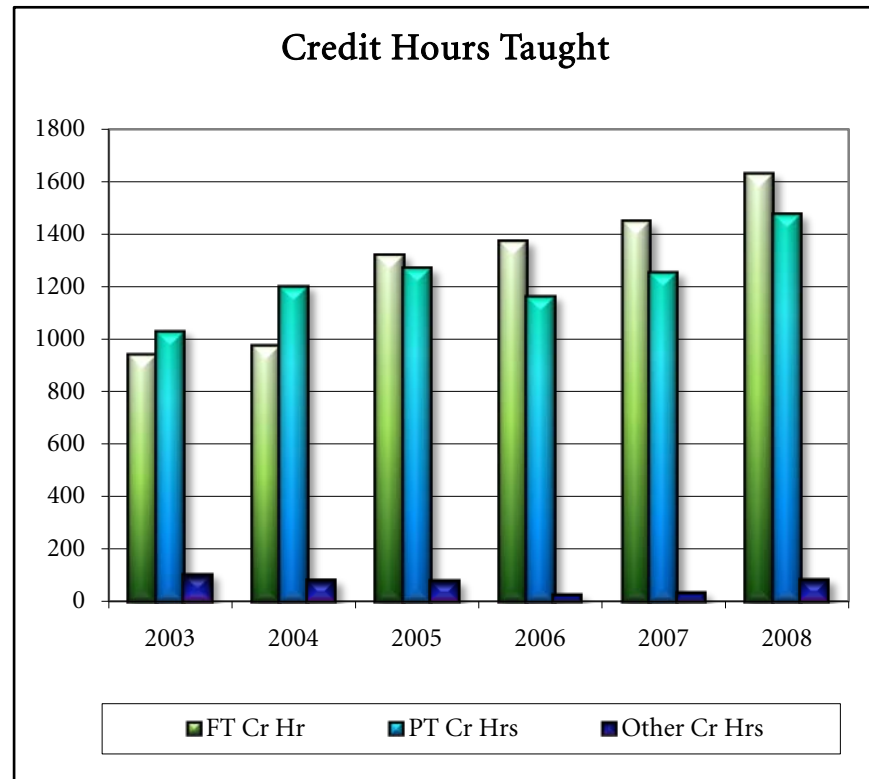
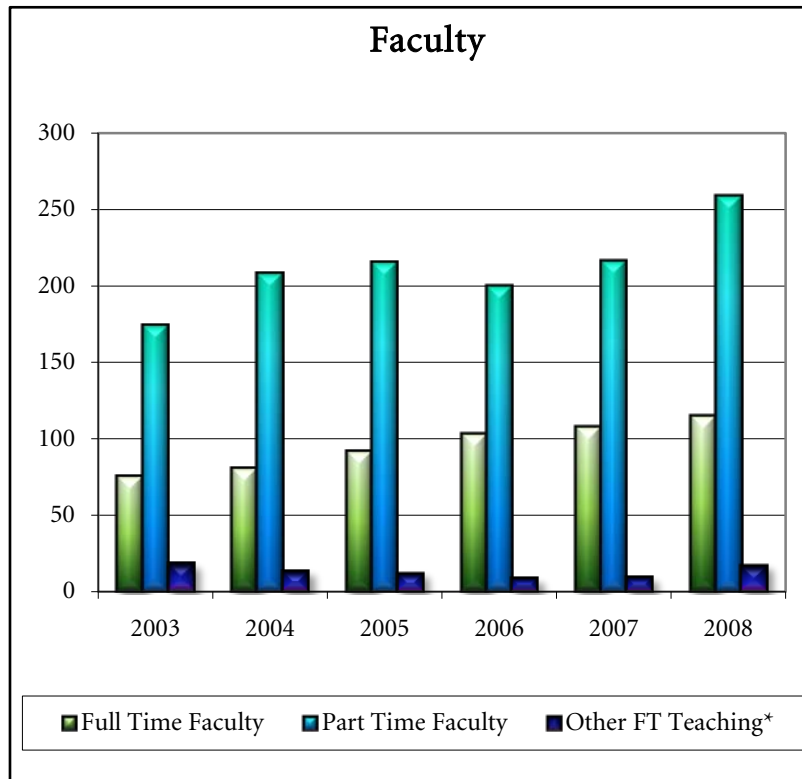


NOTE: Average class size includes independent study and college courses offered on high school campuses.

CREDIT HOURS TAUGHT BY FULL TIME & PART TIME FACULTY

FALL SEMESTER

| Fall | Full Time Faculty | FT Cr Hr | % Taught by FT | Part Time Faculty | PT Cr Hrs | % Taught by PT | Other FT Teaching* | Other Cr Hrs | % Taught by Other |
|------|-------------------|----------|----------------|-------------------|-----------|----------------|--------------------|--------------|-------------------|
| 2003 | 75 | 940 | 45.41% | 174 | 1028 | 49.66% | 18 | 102 | 4.93% |
| 2004 | 80 | 975 | 43.28% | 208 | 1199 | 53.22% | 13 | 79 | 3.51% |
| 2005 | 92 | 1318 | 49.47% | 215 | 1269 | 47.64% | 12 | 77 | 2.89% |
| 2006 | 103 | 1372 | 53.70% | 200 | 1160 | 45.40% | 8 | 23 | 0.90% |
| 2007 | 108 | 1444 | 52.93% | 216 | 1252 | 45.89% | 9 | 32 | 1.17% |
| 2008 | 115 | 1628 | 51.11% | 259 | 1475 | 46.31% | 17 | 82 | 2.57% |



*Other FT Teaching-Administrative and support personnel who taught class(es)

Total number of students served by Corporate and Continuing Education

| | 2004 | 2005 | 2006 | 2007 | 2008 |
|-------------------------------|-------|-------|-------|-------|-------|
| Registrations | 7,229 | 6,189 | 7,054 | 6,306 | 5,729 |
| Headcount (unduplicated) | 4,874 | 4,244 | 4,129 | 3,317 | 3,675 |
| Number of Sections of Classes | 493 | 480 | 700 | 668 | 667 |

Corporate Education

| | 2004 | 2005 | 2006 | 2007 | 2008 |
|-------------------------------|-------|-------|-------|-------|-------|
| Registrations | 3,707 | 3,962 | 4,277 | 2,802 | 3,764 |
| Headcount (unduplicated) | 2,194 | 2,738 | 2,725 | 1,915 | 2,530 |
| Number of Sections of Classes | 277 | 291 | 501 | 389 | 484 |
| Number of Businesses Served | 135 | 180 | 191 | 158 | 145 |

Allied Health Non-Credit Classes

| | 2004 | 2005 | 2006 | 2007 | 2008 |
|-------------------------------|-------|------|------|------|------|
| Registrations | 1,457 | 179 | 205 | 125 | 168 |
| Headcount (unduplicated) | 1,355 | 159 | 150 | 113 | 161 |
| Number of Sections of Classes | 32 | 20 | 16 | 14 | 17 |

Personal and Professional Education

| | 2004 | 2005 | 2006 | 2007 | 2008 |
|-------------------------------|-------|-------|-------|-------|------|
| Registrations | 1,195 | 1,943 | 1,350 | 1,889 | 547 |
| Headcount (unduplicated) | 1,022 | 1,259 | 867 | 924 | 430 |
| Number of Sections of Classes | 140 | 166 | 107 | 155 | 67 |

Early Childhood Education 'Caregiver Certification'

| | 2004 | 2005 | 2006 | 2007 | 2008 |
|-------------------------------|------|------|------|------|------|
| Registrations | 641 | 0 | 294 | 242 | 386 |
| Headcount (unduplicated) | 84 | 0 | 204 | 191 | 348 |
| Number of Sections of Classes | 44 | 0 | 13 | 12 | 18 |

KEEP (Kid's Enrichment) and Kid's College

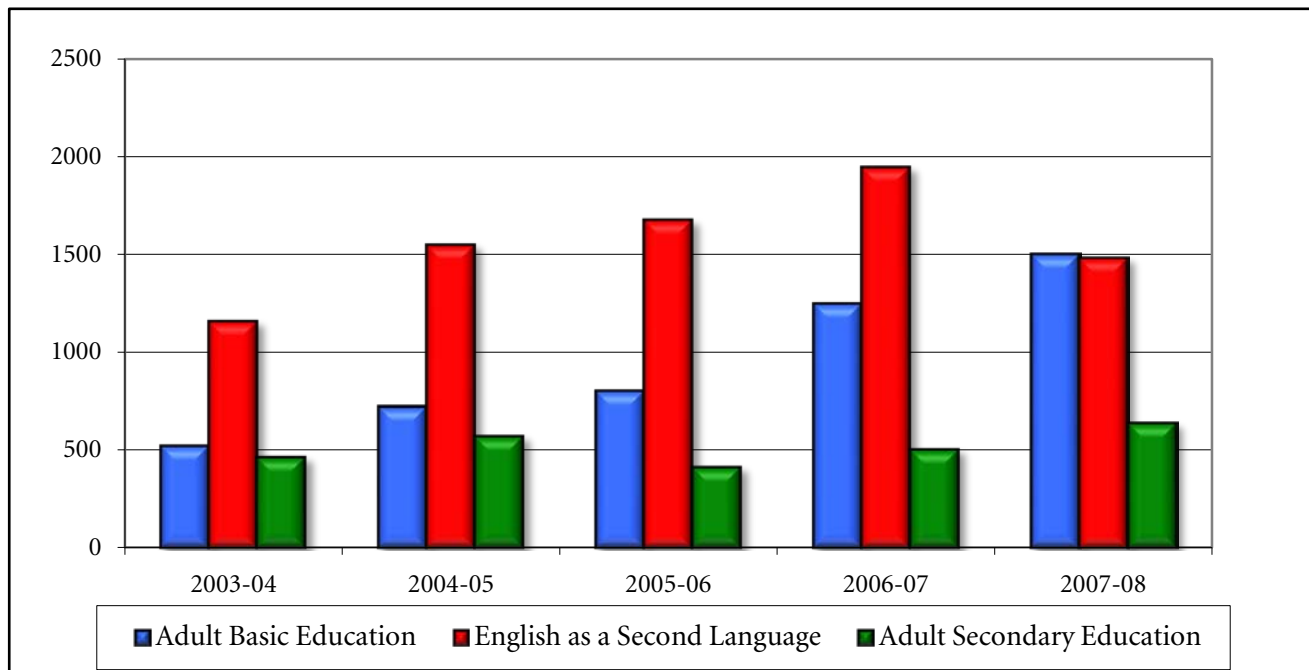
| | 2004 | 2005 | 2006 | 2007 | 2008 |
|-------------------------------|------|------|------|------|------|
| Registrations | 229 | 105 | 928 | 1248 | 864 |
| Headcount (unduplicated) | 219 | 88 | 183 | 250 | 246 |
| Number of Sections of Classes | 12 | 3 | 63 | 99 | 81 |

ADULT EDUCATION ENROLLMENTS



Adult Education offers non-credit classes designed to teach and review academic skills culminating with preparation for taking the High School Equivalence (GED) test battery. Other areas such as English as a Second Language (ESL) and computers are also offered.

| Program | 2003-04 | 2004-05 | 2005-06 | 2006-07 | 2007-08 | 5 Year % Change |
|-------------------------------------|---------|---------|---------|---------|---------|-----------------|
| Adult Basic Education | 522 | 722 | 800 | 1,248 | 1,501 | 188% |
| English as a Second Language | 1,157 | 1,548 | 1,675 | 1,946 | 1,481 | 28% |
| Adult Secondary Education | 460 | 567 | 410 | 500 | 633 | 38% |
| Total Students Served | 2,139 | 2,837 | 2,885 | 3,694 | 3,615 | 69% |
| Total GEDs Awarded | 217 | 236 | 344 | 380 | 462 | 113% |



HEADCOUNT ENROLLMENT SUMMARY



FALL 2007 AND FALL 2008

| | | Fall 2007 | | Fall 2008 | | Fall 2007-08 |
|------------------------|---------------------------|--------------|---------|--------------|---------|----------------|
| | | Number | Percent | Number | Percent | Percent Change |
| Total Headcount | | 6,470 | | 7,216 | | 11.5% |
| | FTE | 3,580 | | 4,082 | | 14.0% |
| Enrollment Status | Full-Time | 2,156 | 33.3% | 2,466 | 34.2% | 14.4% |
| | Part-Time | 4,314 | 66.7% | 4,750 | 65.8% | 10.1% |
| Gender | Male | 2,619 | 40.5% | 2,999 | 41.6% | 14.5% |
| | Female | 3,851 | 59.5% | 4,217 | 58.4% | 9.5% |
| Residence | Benton County | 3,532 | 54.6% | 3,943 | 54.6% | 11.6% |
| | Washington County | 2,531 | 39.1% | 2,730 | 37.8% | 7.9% |
| | Other In-State | 283 | 4.4% | 312 | 4.3% | 10.2% |
| | Out-of-State | 124 | 1.9% | 231 | 3.2% | 86.3% |
| Tuition Status | In-District | 2,737 | 42.3% | 3,141 | 43.5% | 14.8% |
| | Out-of-District | 3,573 | 55.2% | 3,690 | 51.1% | 3.3% |
| | Out-of-State | 44 | 0.7% | 255 | 3.5% | 479.5% |
| | Contiguous | 57 | 0.9% | 58 | 0.8% | 1.8% |
| | International | 59 | 0.9% | 72 | 1.0% | 22.0% |
| Ethnic Category | Asian/Pacific Isl'er | 247 | 3.8% | 274 | 3.8% | 10.9% |
| | Black | 118 | 1.8% | 165 | 2.3% | 39.8% |
| | Hispanic | 645 | 10.0% | 765 | 10.6% | 18.6% |
| | Am Indian / Alaska Native | 99 | 1.5% | 121 | 1.7% | 22.2% |
| | White | 5,167 | 79.9% | 5,575 | 77.3% | 7.9% |
| | Unknown | 194 | 3.0% | 316 | 4.4% | 62.9% |
| Age | <18 | 492 | 7.6% | 531 | 7.4% | 7.9% |
| | 18-19 | 1,525 | 23.6% | 1,645 | 22.8% | 7.9% |
| | 20-21 | 1,207 | 18.7% | 1,289 | 17.9% | 6.8% |
| | 22-24 | 1,061 | 16.4% | 1,166 | 16.2% | 9.9% |
| | 25-29 | 919 | 14.2% | 1,029 | 14.3% | 12.0% |
| | 30-34 | 454 | 7.0% | 588 | 8.1% | 29.5% |
| | 35-44 | 527 | 8.1% | 635 | 8.8% | 20.5% |
| | 45-54 | 212 | 3.3% | 248 | 3.4% | 17.0% |
| | 55-64 | 55 | 0.9% | 62 | 0.9% | 12.7% |
| | >=65 | 18 | 0.3% | 23 | 0.3% | 27.8% |
| | | AVERAGE AGE* | 25.3 | | 25.7 | |
| | MEDIAN AGE* | 22.0 | | 22.5 | | |

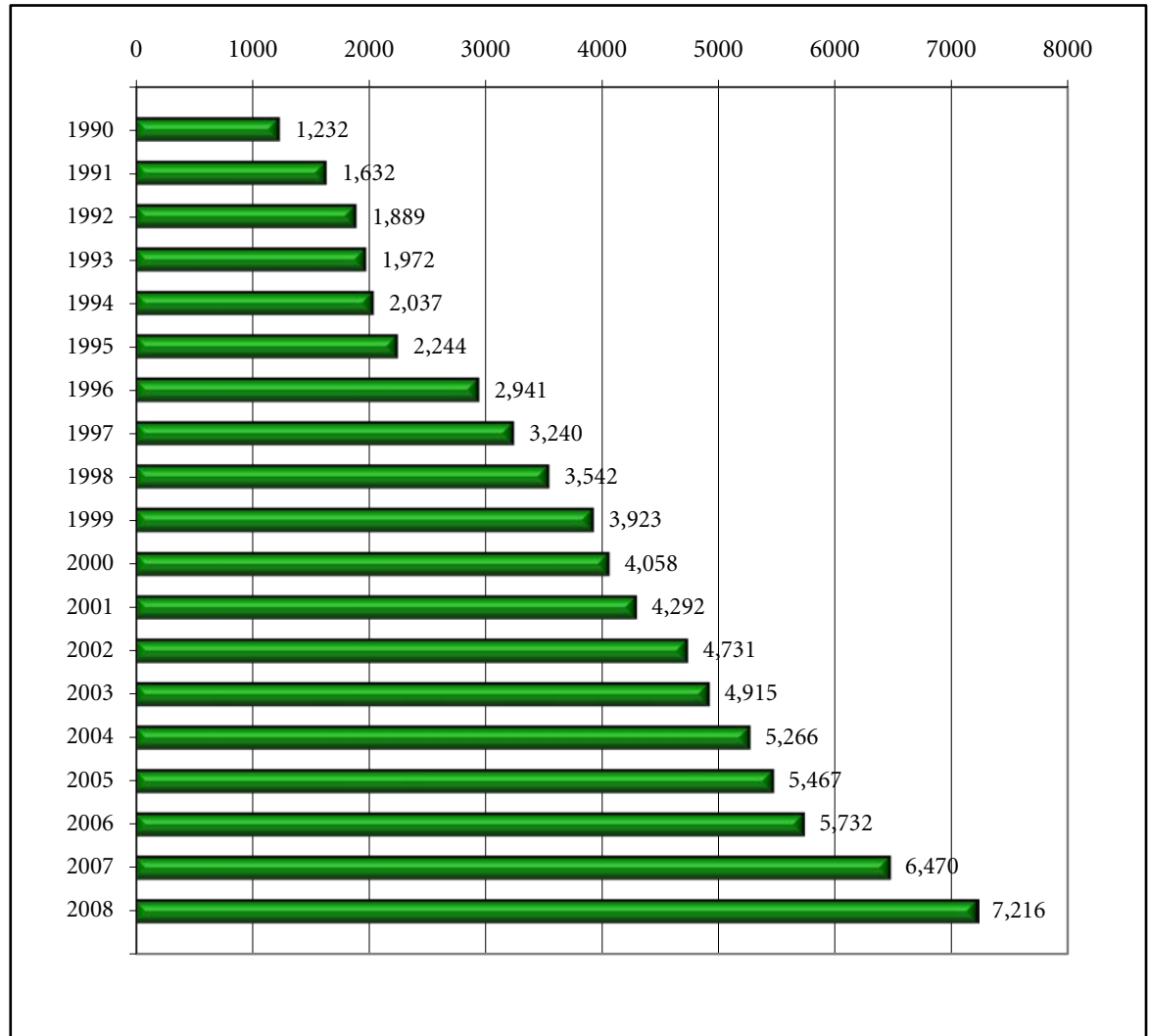
*NOTE: Average and Median Age figures do not include High School Students

HISTORICAL HEADCOUNT SUMMARY



Fall 1990 to Fall 2008

| Year | Total Headcount** | Total % Change |
|------|-------------------|----------------|
| 1990 | 1,232 | |
| 1991 | 1,632 | 32.5% |
| 1992 | 1,889 | 15.7% |
| 1993 | 1,972 | 4.4% |
| 1994 | 2,037 | 3.3% |
| 1995 | 2,244 | 10.2% |
| 1996 | 2,941 | 31.1% |
| 1997 | 3,240 | 10.2% |
| 1998 | 3,542 | 9.3% |
| 1999 | 3,923 | 10.8% |
| 2000 | 4,058 | 3.4% |
| 2001 | 4,292 | 5.8% |
| 2002 | 4,731 | 10.2% |
| 2003 | 4,915 | 3.9% |
| 2004 | 5,266 | 7.1% |
| 2005 | 5,467 | 3.8% |
| 2006 | 5,732 | 4.8% |
| 2007 | 6,470 | 12.9% |
| 2008 | 7,216 | 11.5% |



Source: Arkansas Department of Higher Education

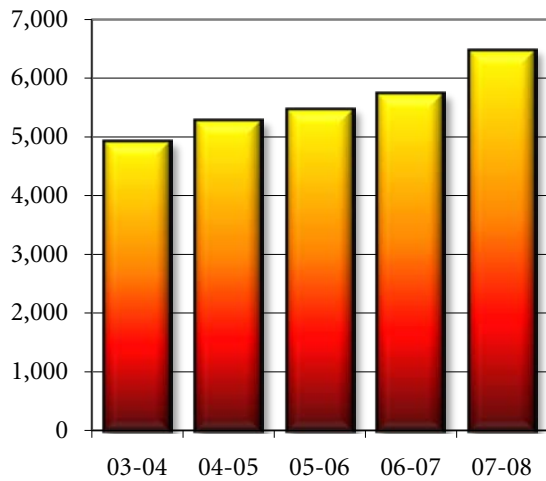
**1990-94 Source: Registrar's In-House Reports

HEADCOUNT ENROLLMENT BY SEMESTER

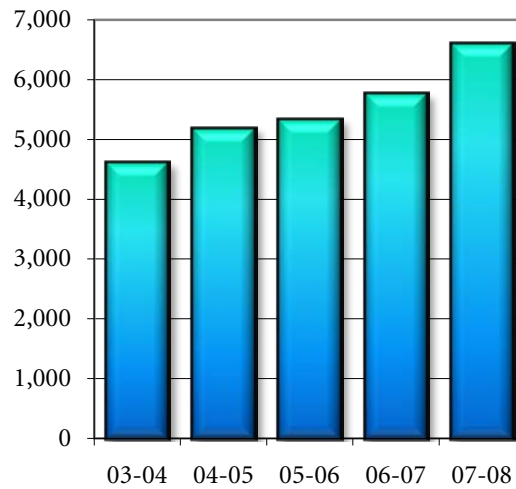


| Year | Fall Headcount* | Fall to Fall % Change | Spring Headcount* | Sp to Sp % Change | Summer I Headcount | Summer II Headcount | Total Summer | Total Summer % Change |
|-------|-----------------|-----------------------|-------------------|-------------------|--------------------|---------------------|--------------|-----------------------|
| 03-04 | 4,915 | 3.9% | 4,601 | 3.7% | 1,209 | 625 | 1,834 | -1.6% |
| 04-05 | 5,266 | 7.1% | 5,171 | 12.4% | 1,381 | 762 | 2,143 | 16.8% |
| 05-06 | 5,467 | 3.8% | 5,330 | 3.1% | 1,550 | 753 | 2,303 | 7.5% |
| 06-07 | 5,732 | 4.8% | 5,756 | 8.0% | 1,753 | 842 | 2,595 | 12.7% |
| 07-08 | 6,470 | 12.9% | 6,594 | 14.6% | 2,101 | 1,072 | 3,173 | 22.3% |

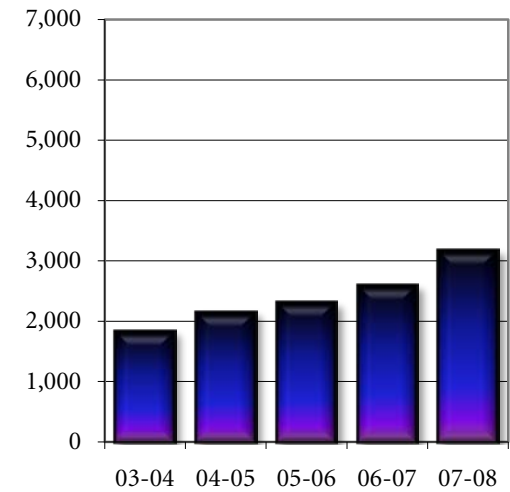
Fall Headcount



Spring Headcount



Summer Headcount



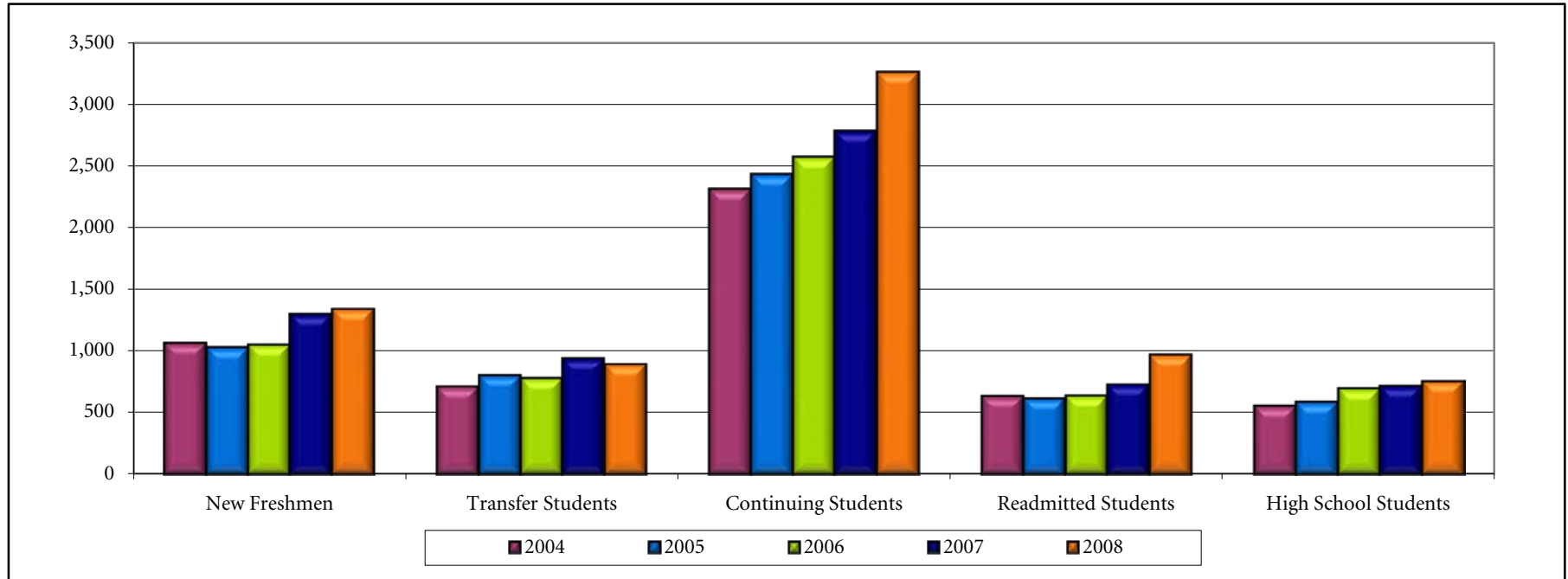
*NOTE: Off schedule classes are not included, such as Late Start and second 8-week

HEADCOUNT BY ENROLLMENT STATUS



FALL SEMESTER

| Fall | New Freshmen | | | Transfer Students | | | Continuing Students | | | Readmitted Students | | | High School Students | | | Total |
|------|--------------|------------|----------------|-------------------|-------|----------------|---------------------|-------|----------------|---------------------|-------|----------------|----------------------|-------|----------------|-------|
| | Count | % of Total | Percent Change | Count | % | Percent Change | Count | % | Percent Change | Count | % | Percent Change | Count | % | Percent Change | |
| 2004 | 1,063 | 20.2% | 6.7% | 710 | 13.5% | -3.9% | 2,308 | 43.8% | 8.0% | 633 | 12.0% | 7.3% | 552 | 10.5% | 21.9% | 5,266 |
| 2005 | 1,029 | 18.8% | -3.2% | 805 | 14.7% | 13.4% | 2,430 | 44.4% | 5.3% | 617 | 11.3% | -2.5% | 586 | 10.7% | 6.2% | 5,467 |
| 2006 | 1,051 | 18.3% | 2.1% | 781 | 13.6% | -3.0% | 2,568 | 44.8% | 5.7% | 638 | 11.1% | 3.4% | 694 | 12.1% | 18.4% | 5,732 |
| 2007 | 1,299 | 20.1% | 23.6% | 941 | 14.5% | 20.5% | 2,785 | 43.0% | 8.5% | 729 | 11.3% | 14.3% | 716 | 11.1% | 3.2% | 6,470 |
| 2008 | 1,340 | 18.6% | 3.2% | 893 | 12.4% | -5.1% | 3,258 | 45.1% | 17.0% | 969 | 13.4% | 32.9% | 756 | 10.5% | 5.6% | 7,216 |



Transfer: Transferred to NWACC from another college or university

Continuing: Continued enrollment from previous semester

Readmitted: Enrolled at NWACC after not attending the previous semester

High School: Students still enrolled in High School

HEADCOUNT BY MAJORS

FALL SEMESTER

| Major | 2004 | 2005 | 2006 | 2007 | 2008 |
|--------------------------------------|--------------|--------------|--------------|--------------|--------------|
| AAS Degrees | | | | | |
| Aviation | 11 | 11 | 35 | 13 | 31 |
| Business Management | 248 | 271 | 266 | 353 | 442 |
| Cert Respiratory Therapist | 30 | 32 | 38 | 16 | 23 |
| Computer Aided Drafting | 66 | 18 | 22 | 19 | 12 |
| Computer Info Systems | 134 | 101 | 103 | 118 | 118 |
| Crime Scene Investigation | | 2 | 5 | 5 | 2 |
| Criminal Justice | 73 | 77 | 77 | 70 | 88 |
| Early Childhood Education | 45 | 64 | 89 | 129 | 123 |
| Electronics Technology | 4 | 5 | 6 | 8 | 7 |
| EMT-Paramedic | 45 | 43 | 39 | 15 | 28 |
| Environmental Regulations,... | 9 | 12 | 17 | 21 | 29 |
| Fire Science | 28 | 36 | 26 | 16 | 50 |
| Graphic Design | 97 | 96 | 86 | 107 | 118 |
| Homeland Security & Emg Mgmt | | | | 11 | 12 |
| Law Enforcement Adm | | 2 | - | 4 | 1 |
| Nursing | 422 | 419 | 307 | 173 | 131 |
| Paralegal | 30 | 36 | 49 | 49 | 55 |
| Physical Therapy Assistant | 51 | 67 | 28 | 12 | 24 |
| TOTAL AAS | 1,293 | 1,292 | 1,193 | 1,139 | 1,294 |
| General Studies | | | | | |
| Associate | | | 397 | 808 | 905 |
| Certificate | | | | 3 | |
| TOTAL General Studies | | | 397 | 811 | 905 |
| Transfer Degrees | | | | | |
| AA | 753 | 831 | 755 | 822 | 1060 |
| AS | 1,288 | 1,262 | 1,235 | 1,411 | 1,496 |
| Agricultural, Life Science | 3 | 3 | 2 | 1 | 7 |
| AAT | 8 | 9 | 16 | 99 | 177 |
| TOTAL Transfer Degrees | 2,052 | 2,105 | 2,008 | 2,333 | 2,740 |
| Technical Certificates | | | | | |
| Aviation Maint Airframe | | | | 3 | 3 |
| Aviation Maint Powerplant | | | | | 1 |
| EMT-Paramedic Cert | 6 | 11 | | 2 | 4 |
| Environmental Reg Science | | | | | 2 |
| Law Enforcement Adm | | | 1 | 3 | |
| Marketing Analyst* | 78 | 2 | - | - | |
| Paraeducators of Spec Needs Learners | | 3 | | 2 | 1 |
| Hospitality Management | | | | 3 | 19 |
| Certificates of Proficiency | | | | | |
| Aviation Management | | 1 | | 1 | |
| Aviation Maintenance | | | | | 1 |
| CAD | 3 | 44 | 44 | 48 | 49 |
| CDA Training | | | | 4 | 2 |
| Early Childhood Development | | 4 | 5 | 10 | 10 |
| EMT Basic | 10 | 29 | 14 | 8 | 15 |
| Health & Safety | | | 2 | 1 | 1 |
| Homeland Security & Emg Mgmt | | | | | 2 |
| Hospitality Management | | | 13 | 13 | 7 |
| Law Enforcement Adm | | 1 | | | |
| Tax Specialist | | | | | 12 |
| TOTAL Certificates | 97 | 95 | 79 | 98 | 129 |
| Undeclared | | | | | |
| Non-degree seeking | 673 | 714 | 826 | 870 | 1,831 |
| TOTAL | 5,266 | 5,467 | 5,732 | 6,470 | 7,216 |

*Major discontinued

Note: Associate of General Studies majors include students working toward (but not admitted to) selective admissions programs such as Nursing.

2008 Non-degree seeking - increase caused better data and programming to reflect student's actual intent

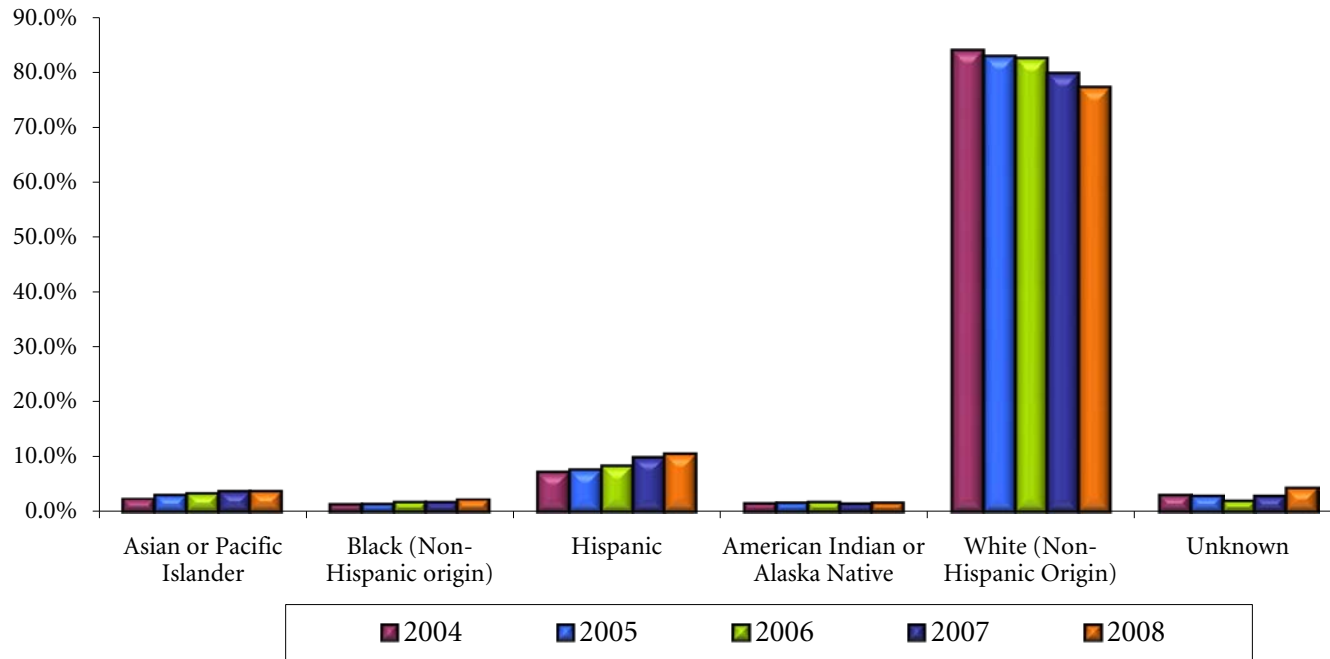
HEADCOUNT BY RACE/ETHNICITY



FALL SEMESTER

| Fall | Asian or Pacific Islander | | | Black (Non-Hispanic origin) | | | Hispanic | | | American Indian or Alaska Native | | | White (Non-Hispanic Origin) | | | Unknown | | | Total |
|------|---------------------------|------------|----------|-----------------------------|------------|----------|----------|------------|----------|----------------------------------|------------|----------|-----------------------------|------------|----------|---------|------------|----------|-------|
| | Total | % of Total | % Change | Total | % of Total | % Change | Total | % of Total | % Change | Total | % of Total | % Change | Total | % of Total | % Change | Total | % of Total | % Change | Total |
| 2004 | 128 | 2.4% | 7.6% | 75 | 1.4% | 29.3% | 385 | 7.3% | 21.8% | 82 | 1.6% | -8.9% | 4,429 | 84.1% | 5.5% | 167 | 3.2% | 24.6% | 5,266 |
| 2005 | 173 | 3.2% | 35.2% | 81 | 1.5% | 8.0% | 421 | 7.7% | 9.4% | 92 | 1.7% | 12.2% | 4,537 | 83.0% | 2.4% | 163 | 3.0% | -2.4% | 5,467 |
| 2006 | 195 | 3.4% | 12.7% | 104 | 1.8% | 28.4% | 486 | 8.5% | 15.4% | 102 | 1.8% | 10.9% | 4,730 | 82.5% | 4.3% | 115 | 2.0% | -29.4% | 5,732 |
| 2007 | 247 | 3.8% | 26.7% | 118 | 1.8% | 13.5% | 645 | 10.0% | 32.7% | 99 | 1.5% | -2.9% | 5,167 | 79.9% | 9.2% | 194 | 3.0% | 68.7% | 6,470 |
| 2008 | 274 | 3.8% | 10.9% | 165 | 2.3% | 39.8% | 765 | 10.6% | 18.6% | 121 | 1.7% | 22.2% | 5,575 | 77.3% | 7.9% | 316 | 4.4% | 62.9% | 7,216 |

Race as a Percent of Total

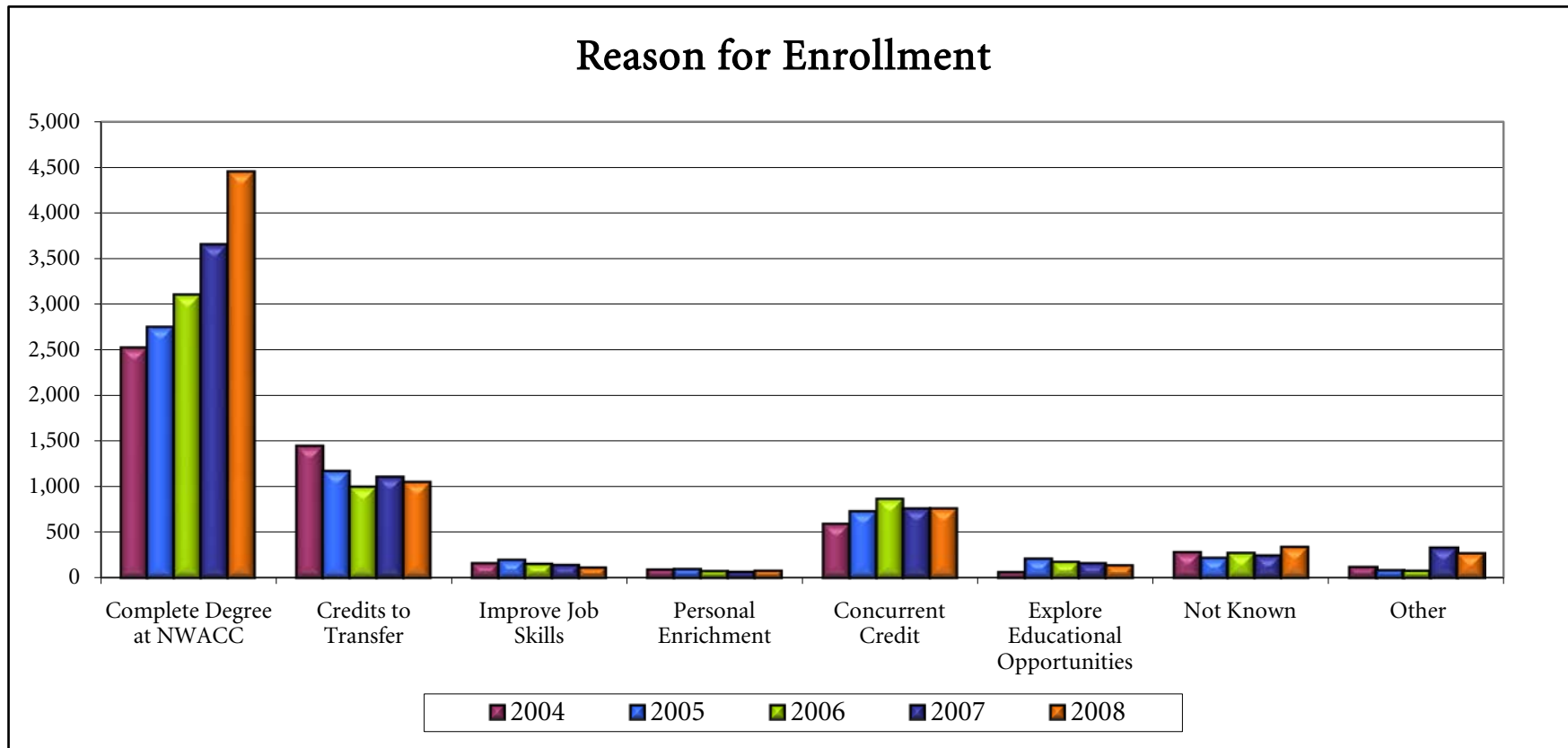


REASON FOR ENROLLMENT AT TIME OF ADMISSION



FALL SEMESTER

| Fall | Complete Degree at NWACC | Credits to Transfer | Improve Job Skills | Personal Enrichment | Concurrent Credit | Explore Educational Opportunities | Not Known | Other | Total Students |
|------|--------------------------|---------------------|--------------------|---------------------|-------------------|-----------------------------------|-----------|-------|----------------|
| 2004 | 2,512 | 1,440 | 163 | 92 | 589 | 65 | 283 | 122 | 5,266 |
| 2005 | 2,746 | 1,174 | 199 | 99 | 731 | 211 | 221 | 86 | 5,467 |
| 2006 | 3,099 | 1,000 | 155 | 77 | 868 | 178 | 276 | 79 | 5,732 |
| 2007 | 3,649 | 1,108 | 142 | 66 | 762 | 162 | 248 | 333 | 6,470 |
| 2008 | 4,452 | 1,053 | 113 | 79 | 764 | 140 | 343 | 272 | 7,216 |

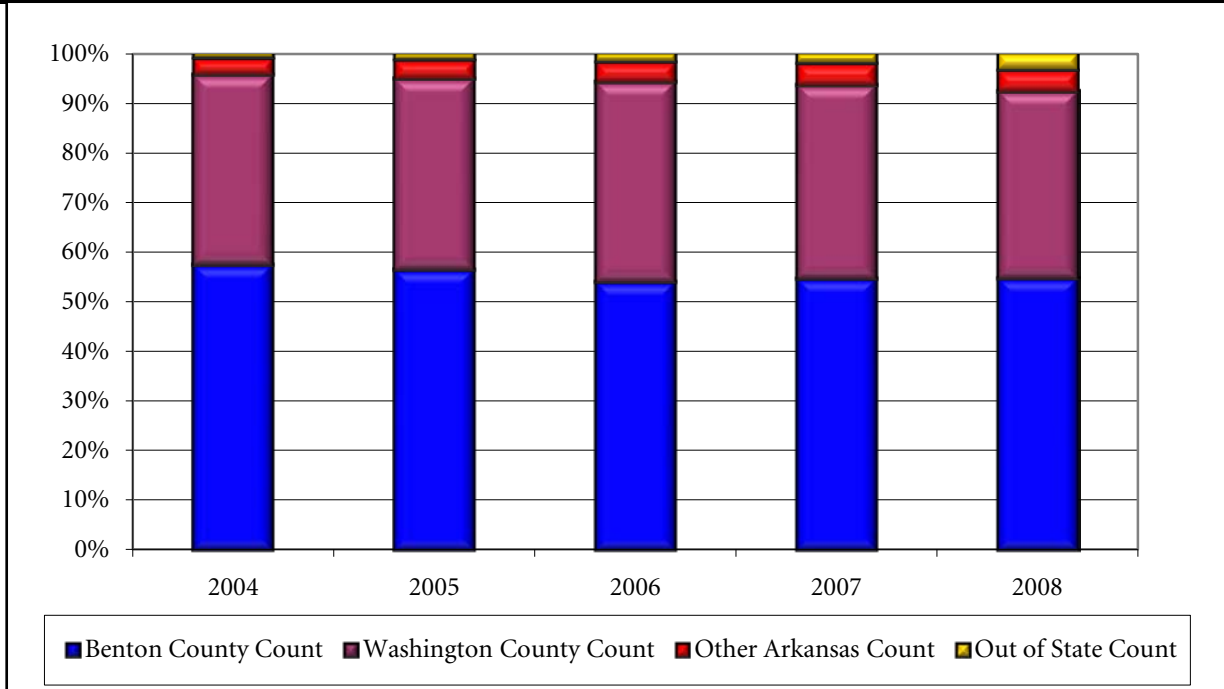


HEADCOUNT BY COUNTY OF RESIDENCY



FALL SEMESTER

| Fall | Benton County | | Washington County | | Other Arkansas | | Out of State | | Total |
|------|---------------|------------|-------------------|------------|----------------|------------|--------------|------------|-------|
| | Count | % of Total | Count | % of Total | Count | % of Total | Count | % of Total | |
| 2004 | 3,020 | 57.3% | 2,023 | 38.4% | 175 | 3.3% | 48 | 0.9% | 5,266 |
| 2005 | 3,084 | 56.4% | 2,108 | 38.6% | 204 | 3.7% | 71 | 1.3% | 5,467 |
| 2006 | 3,092 | 53.9% | 2,317 | 40.4% | 230 | 4.0% | 93 | 1.6% | 5,732 |
| 2007 | 3,532 | 54.6% | 2,531 | 39.1% | 283 | 4.4% | 124 | 1.9% | 6,470 |
| 2008 | 3,943 | 54.6% | 2,730 | 37.8% | 312 | 4.3% | 231 | 3.2% | 7,216 |



WASHINGTON COUNTY FACILITIES ENROLLMENT



CREDIT COURSES

| Term | Fall 2004 | | Fall 2005 | | Fall 2006 | | Fall 2007 | | Fall 2008 | |
|--|------------|------------|------------|------------|--------------|------------|--------------|------------|--------------|------------|
| | Count | % of Total | Count | % of Total | Count | % of Total | Count | % of Total | Count | % of Total |
| Headcount | 634 | 12.0% | 654 | 12.0% | 1,009 | 17.6% | 1,175 | 18.2% | 1,185 | 16.4% |
| Females | 385 | 60.7% | 362 | 55.4% | 609 | 60.4% | 669 | 56.9% | 695 | 59.1% |
| Males | 249 | 39.3% | 292 | 44.6% | 400 | 39.6% | 506 | 43.1% | 490 | 41.7% |
| Enrollment Status | | | | | | | | | | |
| New Student | 187 | 29.5% | 215 | 32.9% | 272 | 27.0% | 348 | 29.6% | 324 | 27.6% |
| New Transfer | 109 | 17.2% | 91 | 13.9% | 162 | 16.1% | 181 | 15.4% | 155 | 13.2% |
| Readmitted | 75 | 11.8% | 62 | 9.5% | 113 | 11.2% | 124 | 10.6% | 142 | 12.1% |
| Continuing | 257 | 40.5% | 281 | 43.0% | 353 | 35.0% | 422 | 35.9% | 521 | 44.3% |
| Concurrent | 5 | 0.8% | 3 | 0.5% | 107 | 10.6% | 98 | 8.3% | 42 | 3.6% |
| Special | 1 | 0.2% | 2 | 0.3% | 2 | 0.2% | 2 | 0.2% | 1 | 0.1% |
| County of Residence | | | | | | | | | | |
| Washington | 431 | 68.0% | 456 | 69.7% | 780 | 77.3% | 914 | 77.8% | 918 | 78.1% |
| Benton | 174 | 27.4% | 164 | 25.1% | 175 | 17.3% | 194 | 16.5% | 195 | 16.6% |
| Madison | 7 | 1.1% | 9 | 1.4% | 14 | 1.4% | 17 | 1.4% | 23 | 2.0% |
| Carroll | 6 | 0.9% | 3 | 0.5% | 3 | 0.3% | 7 | 0.6% | 10 | 0.9% |
| Other | 16 | 2.5% | 22 | 3.4% | 37 | 3.7% | 43 | 3.7% | 39 | 3.3% |
| Race /Ethnicity | | | | | | | | | | |
| Asian or Pacific Islander | 14 | 2.2% | 18 | 2.8% | 31 | 3.1% | 42 | 3.6% | 50 | 4.3% |
| Black (Non-Hispanic origin) | 13 | 2.1% | 12 | 1.8% | 25 | 2.5% | 34 | 2.9% | 38 | 3.2% |
| Hispanic | 53 | 8.4% | 66 | 10.1% | 68 | 6.7% | 92 | 7.8% | 98 | 8.3% |
| American Indian or Alaska Native | 11 | 1.7% | 11 | 1.7% | 15 | 1.5% | 18 | 1.5% | 17 | 1.4% |
| White (Non-Hispanic Origin) | 532 | 83.9% | 528 | 80.7% | 844 | 83.6% | 932 | 79.3% | 932 | 79.3% |
| Unknown | 11 | 1.7% | 19 | 2.9% | 26 | 2.6% | 57 | 4.9% | 50 | 4.3% |
| Enrolled in only Washington County* | 131 | | 149 | | 424 | | 456 | | 438 | |

Washington County Facilities:

Washington County Center, NTI, RTC, AATC, Washington County Sheriff's Office

Does not include Step Ahead students taking classes at their respective high schools.

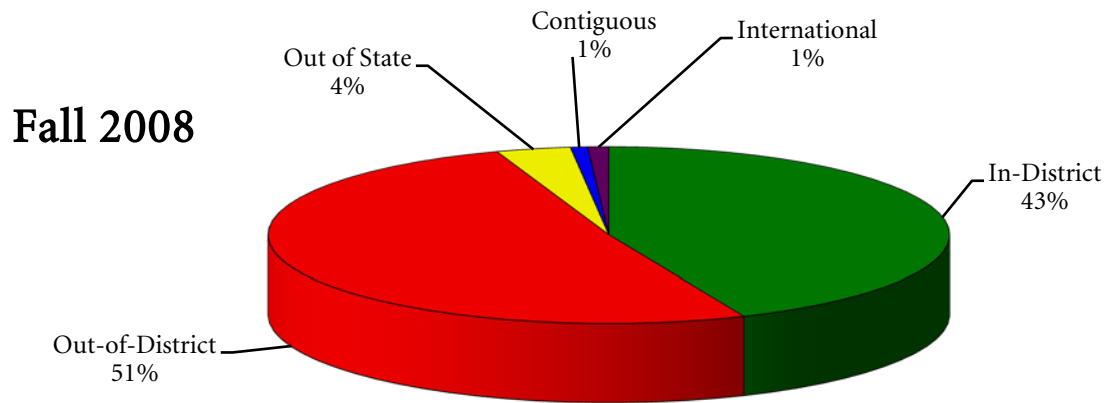
*Fall 2006 increased caused by RTC changing from offering Step Ahead classes to offering regular college credit classes

HEADCOUNT ENROLLMENT BY TUITION STATUS



BY FALL SEMESTER

| Fall | In-District | | Out-of-District | | Out of State | | Contiguous | | International | | Total |
|------|-------------|---------|-----------------|---------|--------------|---------|------------|---------|---------------|---------|-------|
| | Count | Percent | Count | Percent | Count | Percent | Count | Percent | Count | Percent | |
| 2004 | 2,464 | 46.8% | 2,718 | 51.6% | 45 | 0.9% | n/a | - | 39 | 0.7% | 5,266 |
| 2005 | 2,438 | 44.6% | 2,894 | 52.9% | 34 | 0.6% | 38 | 0.7% | 63 | 1.2% | 5,467 |
| 2006 | 2,400 | 41.9% | 3,172 | 55.3% | 33 | 0.6% | 57 | 1.0% | 70 | 1.2% | 5,732 |
| 2007 | 2,737 | 42.3% | 3,573 | 55.2% | 44 | 0.7% | 57 | 0.9% | 59 | 0.9% | 6,470 |
| 2008 | 3,141 | 43.5% | 3,690 | 51.1% | 255 | 3.5% | 58 | 0.8% | 72 | 1.0% | 7,216 |



Tuition status as defined by the institution:

In-District: Student must live in the Bentonville or Rogers School District for 6 months prior to the first day of classes

Out-of-District: Student must have lived within the State of Arkansas for 6 months prior to the first day of classes

Out-of-state: Student must be a citizen of the United States

International: Student who is not a US citizen or legal resident

Contiguous: Live in Mo or OK counties that border Benton County

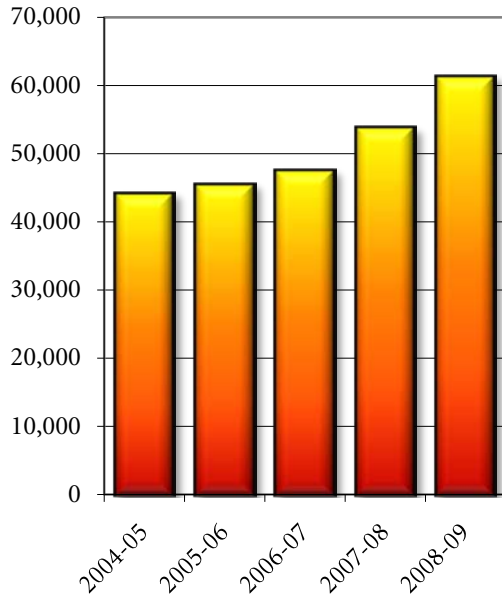
STUDENT SEMESTER CREDIT HOURS



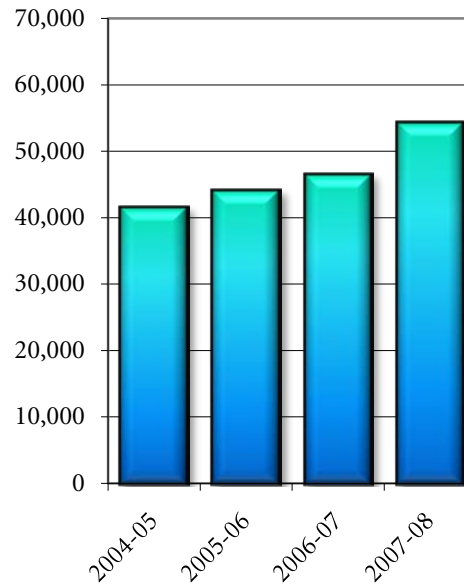
BY SEMESTER

| Year | Fall | | Spring | | Summer | | |
|---------|--------|-----------------------|--------|-------------------|---------------|----------------|-----------------------|
| | SSCH* | Fall to Fall % Change | SSCH* | Sp to Sp % Change | Summer I SSCH | Summer II SSCH | Total Summer % Change |
| 2004-05 | 44,059 | 10.3% | 41,577 | 12.1% | 5,569 | 2,847 | 16.5% |
| 2005-06 | 45,514 | 3.3% | 44,099 | 6.1% | 6,535 | 2,887 | 12.0% |
| 2006-07 | 47,462 | 4.3% | 46,516 | 5.5% | 7,681 | 3,248 | 16.0% |
| 2007-08 | 53,701 | 13.1% | 54,293 | 16.7% | 9,398 | 4,151 | 24.0% |
| 2008-09 | 61,230 | 14.0% | | | | | |

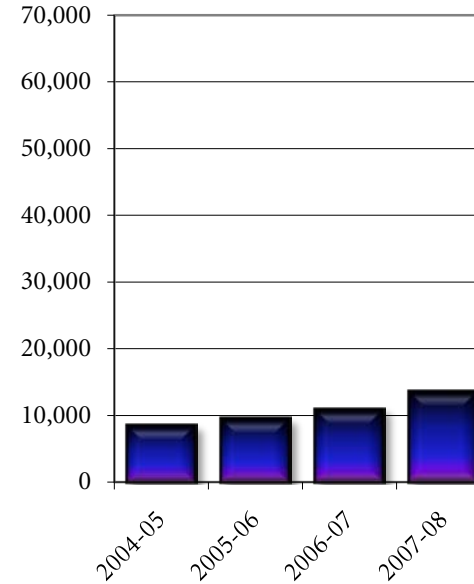
Fall SSCH



Spring SSCH



Summer SSCH

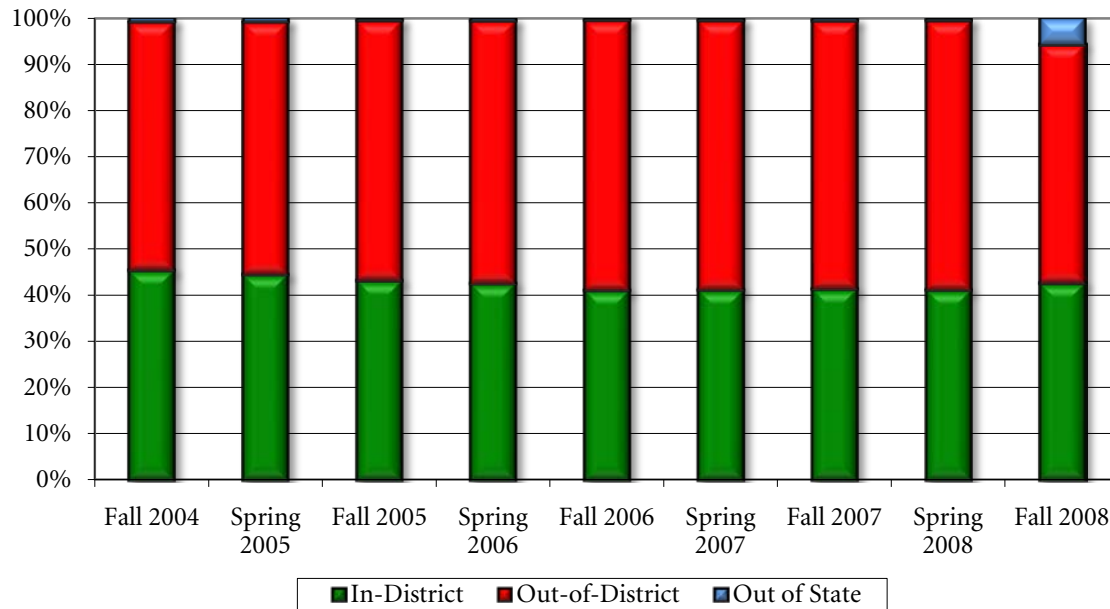


*Fall and Spring off-schedule classes (such as Late Start and second 8-week) are not included to more accurately compare between semesters

STUDENT SEMESTER CREDIT HOURS BY TUITION STATUS

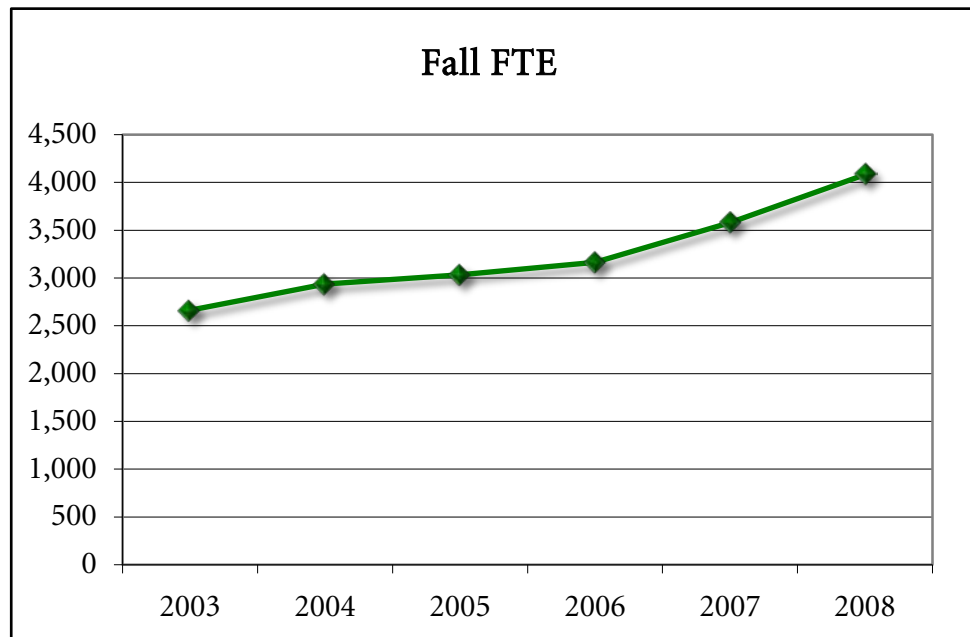


| Term | In-District | | Out-of-District | | Out of State | | Total SSCH |
|-------------|-------------|---------|-----------------|---------|--------------|---------|------------|
| | Count | Percent | Count | Percent | Count | Percent | |
| Fall 2002 | 18,229 | 48.0% | 19,546 | 51.5% | 199 | 0.5% | 37,974 |
| Spring 2003 | 16,904 | 47.7% | 18,289 | 51.6% | 275 | 0.8% | 35,468 |
| Fall 2003 | 18,769 | 47.0% | 20,891 | 52.3% | 288 | 0.7% | 39,948 |
| Spring 2004 | 17,201 | 46.4% | 19,534 | 52.7% | 338 | 0.9% | 37,073 |
| Fall 2004 | 20,002 | 45.4% | 23,679 | 53.7% | 378 | 0.9% | 44,059 |
| Spring 2005 | 18,501 | 44.5% | 22,703 | 54.6% | 373 | 0.9% | 41,577 |
| Fall 2005 | 19,623 | 43.1% | 25,610 | 56.3% | 281 | 0.6% | 45,514 |
| Spring 2006 | 18,743 | 42.5% | 25,051 | 56.8% | 305 | 0.7% | 44,099 |
| Fall 2006 | 19,485 | 41.1% | 27,724 | 58.4% | 253 | 0.5% | 47,462 |
| Spring 2007 | 19,126 | 41.1% | 27,107 | 58.3% | 283 | 0.6% | 46,516 |
| Fall 2007 | 22,192 | 41.3% | 31,139 | 58.0% | 370 | 0.7% | 53,701 |
| Spring 2008 | 22,318 | 41.1% | 31,640 | 58.3% | 335 | 0.6% | 54,293 |
| Fall 2008 | 26,100 | 42.6% | 31,625 | 51.6% | 3,505 | 5.7% | 61,230 |



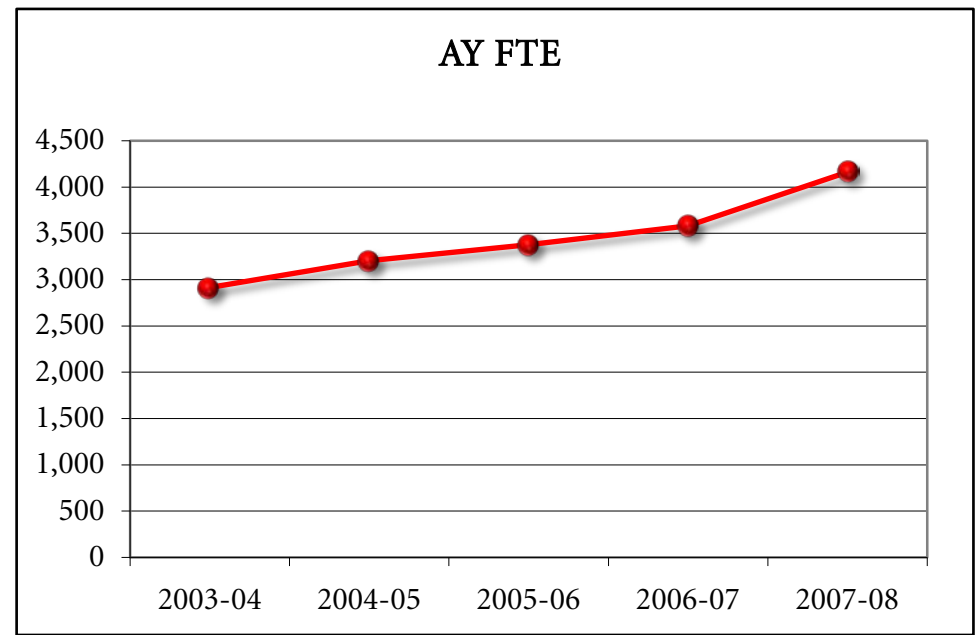
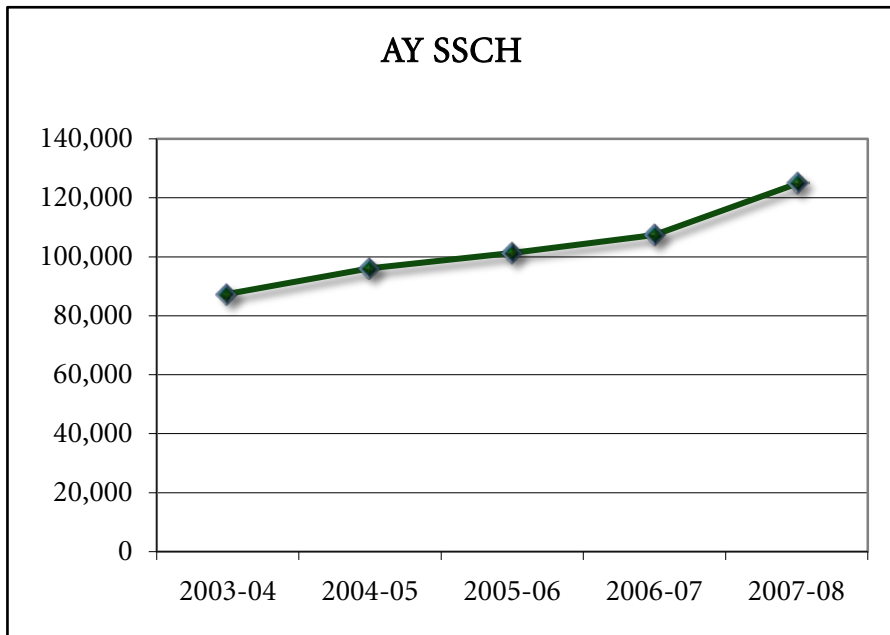
STUDENT SEMESTER CREDIT HOUR (SSCH) AND FULL TIME EQUIVALENT (FTE) BY FALL SEMESTER

| Fall | Fall SSCH | Total FTE | % Change FTE |
|------|-----------|-----------|--------------|
| 2003 | 39,948 | 2,663 | 5.2% |
| 2004 | 44,059 | 2,937 | 10.3% |
| 2005 | 45,514 | 3,034 | 3.3% |
| 2006 | 47,462 | 3,164 | 4.3% |
| 2007 | 53,701 | 3,580 | 13.1% |
| 2008 | 61,230 | 4,082 | 14.0% |



ANNUAL STUDENT SEMESTER CREDIT HOUR (SSCH) AND FULL TIME EQUIVALENT (FTE) BY ACADEMIC YEAR AND LOCATION TAUGHT

| Academic Year | In-District SSCH | Out-District SSCH | Distance Learning SSCH | Total SSCH | Total FTE | % Change FTE |
|---------------|------------------|-------------------|------------------------|------------|-----------|--------------|
| 2003-04 | 79,205 | 4,837 | 3,424 | 87,466 | 2,916 | 5.2% |
| 2004-05 | 82,053 | 8,288 | 5,787 | 96,128 | 3,204 | 9.9% |
| 2005-06 | 82,626 | 9,360 | 9,368 | 101,354 | 3,378 | 5.4% |
| 2006-07 | 82,213 | 13,022 | 12,160 | 107,395 | 3,580 | 6.0% |
| 2007-08 | 88,825 | 12,928 | 23,062 | 124,815 | 4,161 | 16.2% |



Includes all credit hours (on-schedule and off-schedule) for reporting year

HIGH SCHOOLS IN NWACC SERVICE AREA



Benton County High Schools

| High School | 2005 Grads | Attended NWACC Fall 2005 | % at NWACC Fall 2005 | 2006 Grads | Attended NWACC Fall 2006 | % at NWACC Fall 2006 | 2007 Grads | Attended NWACC Fall 2007 | % at NWACC Fall 2007 | 2008 Grads | Attended NWACC Fall 2008 | % at NWACC Fall 2008 |
|---|--------------|--------------------------|----------------------|--------------|--------------------------|----------------------|--------------|--------------------------|----------------------|--------------|--------------------------|----------------------|
| Bentonville | 433 | 94 | 21.71% | 400 | 96 | 24.00% | 512 | 104 | 20.31% | 607 | 144 | 23.72% |
| Decatur | 32 | 6 | 18.75% | 40 | 4 | 10.00% | 41 | 5 | 12.20% | 40 | 3 | 7.50% |
| Gentry | 91 | 15 | 16.48% | 86 | 12 | 13.95% | 79 | 10 | 12.66% | 91 | 14 | 15.38% |
| Gravette | 79 | 17 | 21.52% | 90 | 16 | 17.78% | 102 | 14 | 13.73% | 119 | 13 | 10.92% |
| Pea Ridge | 87 | 12 | 13.79% | 79 | 13 | 16.46% | 83 | 17 | 20.48% | 84 | 11 | 13.10% |
| Rogers | 643 | 134 | 20.84% | 691 | 147 | 21.27% | 700 | 161 | 23.00% | 689 | 152 | 22.06% |
| Siloam Springs | 185 | 23 | 12.43% | 224 | 25 | 11.16% | 239 | 40 | 16.74% | 238 | 30 | 12.61% |
| Totals from Benton County High Schools | 1,550 | 301 | 19.42% | 1,610 | 313 | 19.44% | 1,756 | 351 | 19.99% | 1,868 | 367 | 19.65% |

Washington County High Schools

| High School | 2005 Grads | Attended NWACC Fall 2005 | % at NWACC Fall 2005 | 2006 Grads | Attended NWACC Fall 2006 | % at NWACC Fall 2006 | 2007 Grads | Attended NWACC Fall 2007 | % at NWACC Fall 2007 | 2008 Grads | Attended NWACC Fall 2008 | % at NWACC Fall 2008 |
|---|--------------|--------------------------|----------------------|--------------|--------------------------|----------------------|--------------|--------------------------|----------------------|--------------|--------------------------|----------------------|
| Elkins | 62 | 4 | 6.45% | 62 | 0 | 0.00% | 58 | 11 | 18.97% | 66 | 21 | 31.82% |
| Farmington | 113 | 13 | 11.50% | 108 | 18 | 16.67% | 124 | 18 | 14.52% | 122 | 8 | 6.56% |
| Fayetteville | 532 | 51 | 9.59% | 546 | 43 | 7.88% | 538 | 58 | 10.78% | 570 | 56 | 9.82% |
| Greenland | 76 | 6 | 7.89% | 57 | 16 | 28.07% | 71 | 10 | 14.08% | 62 | 4 | 6.45% |
| Lincoln | 74 | 9 | 12.16% | 65 | 6 | 9.23% | 95 | 8 | 8.42% | 91 | 15 | 16.48% |
| Regional Tech Ctr* | | | | | 4 | | | 2 | | | 2 | |
| Prairie Grove | 88 | 10 | 11.36% | 88 | 9 | 10.23% | 120 | 14 | 11.67% | 112 | 17 | 15.18% |
| Springdale Har-Ber* | | | - | 47 | 11 | 23.40% | 158 | 34 | 21.52% | 422 | 80 | 18.96% |
| Springdale High | 623 | 134 | 21.51% | 665 | 116 | 17.44% | 655 | 124 | 18.93% | 371 | 86 | 23.18% |
| West Fork | 70 | 6 | 8.57% | 83 | 8 | 9.64% | 92 | 10 | 10.87% | 87 | 10 | 11.49% |
| Totals from Washington County High Schools | 1,638 | 233 | 14.22% | 1,721 | 231 | 13.42% | 1,911 | 289 | 15.12% | 1,903 | 299 | 15.71% |

Source: Telephone survey of High Schools and ADHE database

*Began 2005-06

NWACC works as a partner with local high schools to offer students the opportunity to take college credit courses and experience the rigors of college study in their own schools prior to graduation.

Headcount by High School

| School | Fall 2005 | Spring 2006 | Fall 2006 | Spring 2007 | Fall 2007 | Spring 2008 | Fall 2008 | % Growth Fall 2005-08 |
|--------------------------------|------------|-------------|------------|-------------|------------|-------------|------------|-----------------------|
| Ambassadors for Christ Academy | | | 9 | 8 | 11 | 11 | 18 | |
| Bentonville | 133 | 109 | 109 | 105 | 125 | 119 | 137 | |
| Fayetteville East | 0 | 0 | 0 | 0 | 0 | 0 | 35 | |
| Gentry | | 4 | 11 | 12 | 27 | 22 | 18 | |
| Gravette | 25 | 24 | 33 | 31 | 20 | 21 | 23 | |
| Lincoln | 34 | 31 | 38 | 27 | 34 | 24 | 18 | |
| Pea Ridge | | 10 | 10 | 10 | 19 | 19 | 33 | |
| Prairie Grove | | | 8 | 8 | 9 | 11 | 11 | |
| Rogers | 129 | 117 | 118 | 121 | 143 | 142 | 189 | |
| RTC/Fayetteville West | 85 | 66 | 0* | 0 | 0 | 0 | 0 | |
| Shiloh Christian | 18 | 24 | 66 | 65 | 73 | 73 | 91 | |
| Siloam Springs | | - | 8 | 7 | 31 | 12 | 27 | |
| Springdale | 108 | 103 | 105 | 103 | 28 | 24 | 28 | |
| Springdale Har-Ber | 5 | 7 | 31 | 27 | 50 | 46 | 36 | |
| TOTAL | 537 | 495 | 546 | 524 | 570 | 524 | 664 | 24% |

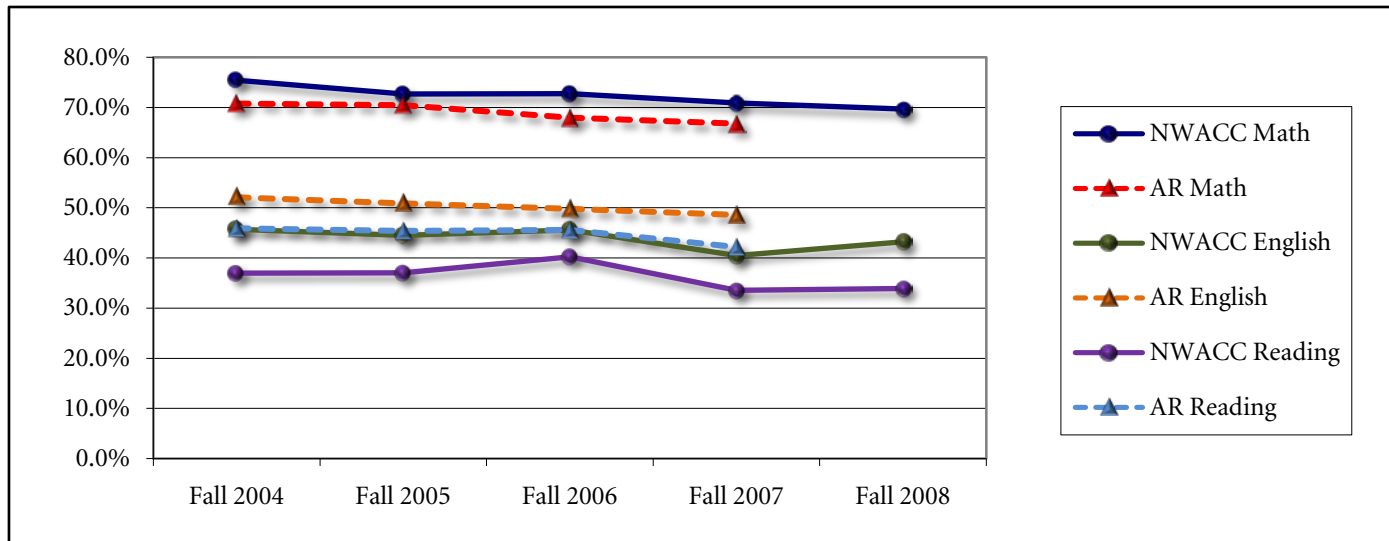
Student Semester Credit Hours/Sections by High School

| School | 2005 | | 2006 | | 2006 | | Spring 2007 | | Fall 2007 | | Spring 2008 | | Fall 2008 | | % Growth Fall 2004-07 |
|--------------------------------|--------------|---------------|--------------|---------------|--------------|---------------|--------------|---------------|--------------|---------------|--------------|---------------|--------------|---------------|-----------------------|
| | SSCH | # of Sections | SSCH | # of Sections | SSCH | # of Sections | SSCH | # of Sections | SSCH | # of Sections | SSCH | # of Sections | SSCH | # of Sections | |
| Ambassadors for Christ Academy | | | | | 33 | 2 | 24 | 1 | 33 | 2 | 33 | 2 | 112 | 3 | |
| Bentonville | 578 | 7 | 381 | 7 | 488 | 6 | 399 | 6 | 587 | 7 | 480 | 7 | 662 | 8 | |
| Fayetteville E. | 0 | 0 | 0 | 0 | 0 | 0 | 0 | 0 | 0 | 0 | 0 | 0 | 165 | 2 | |
| RTC/Fayetteville W. | 339 | 8 | 425 | 1 | 0 | 0 | 0 | 0 | 0 | 0 | 0 | 0 | | | |
| Gentry | 66 | 1 | 12 | 1 | 33 | 1 | 33 | 1 | 124 | 3 | 93 | 3 | 81 | 2 | |
| Gravette | 0 | 0 | 72 | 1 | 96 | 1 | 93 | 1 | 60 | 1 | 63 | 1 | 69 | 1 | |
| Lincoln | 178 | 3 | 136 | 3 | 168 | 4 | 105 | 3 | 121 | 3 | 72 | 2 | 54 | 1 | |
| Pea Ridge | | | 30 | 1 | 30 | 1 | 30 | 1 | 57 | 1 | 57 | 2 | 179 | 4 | |
| Prairie Grove | | | | | 24 | 1 | 24 | 1 | 30 | 1 | 36 | 3 | 36 | 1 | |
| Rogers | 579 | 6 | 483 | 10 | 538 | 6 | 485 | 7 | 670 | 8 | 565 | 9 | 752 | 8 | |
| Shiloh Christian | 72 | 4 | 81 | 4 | 308 | 2 | 276 | 3 | 353 | 5 | 318 | 7 | 386 | 4 | |
| Siloam Springs | | | - | | 24 | 1 | 21 | 1 | 123 | 2 | 39 | 2 | 117 | 2 | |
| Springdale | 488 | 5 | 384 | 6 | 496 | 5 | 402 | 5 | 135 | 2 | 103 | 2 | 128 | 2 | |
| Springdale Har-Ber | 20 | 2 | 28 | 2 | 127 | 2 | 99 | 2 | 217 | 3 | 165 | 2 | 147 | 2 | |
| TOTAL | 2,320 | 36 | 2,032 | 36 | 2,365 | 32 | 1,991 | 32 | 2,510 | 38 | 2,024 | 42 | 2,888 | 40 | 24% |

*Students attending RTC are coded as 'concurrent' students and not Step Ahead beginning Fall 2006

FIRST TIME FRESHMEN* REQUIRING REMEDIATED COURSE WORK

| | Fall 2004 | | Fall 2005 | | Fall 2006 | | Fall 2007 | | Fall 2008 | |
|---|-----------|-------|-----------|-------|-----------|-------|-----------|-------|-----------|-------|
| Number of First-time Students-NWACC | 1,063 | | 1,029 | | 1,051 | | 1,299 | | 1,340 | |
| Number of First-time Students - all AR 2-year | 9,155 | | 8,911 | | 8,497 | | 9,434 | | n/a | |
| MATH | | | | | | | | | | |
| **Number Required Remediation-NWACC | 802 | 75.4% | 748 | 72.7% | 765 | 72.8% | 921 | 70.9% | 934 | 69.7% |
| All AR 2-year | 4,695 | 70.8% | 4,597 | 70.5% | 4,256 | 68.0% | 4,711 | 66.8% | n/a | n/a |
| ENGLISH | | | | | | | | | | |
| **Number Required Remediation-NWACC | 486 | 45.7% | 458 | 44.5% | 479 | 45.6% | 526 | 40.5% | 579 | 43.2% |
| All AR 2-year | 3,455 | 52.1% | 3,315 | 50.9% | 3,122 | 49.8% | 3,426 | 48.6% | n/a | n/a |
| READING | | | | | | | | | | |
| **Number Required Remediation-NWACC | 393 | 37.0% | 381 | 37.0% | 423 | 40.2% | 436 | 33.6% | 455 | 34.0% |
| All AR 2-year | 3,040 | 45.9% | 2,958 | 45.4% | 2,858 | 45.6% | 2,977 | 42.2% | n/a | n/a |



*First time Freshmen are students who have never attended college before - not all were tested.

*NOTE: In 2003 numbers were revised due to WestArk becoming 4-year institution

**The number of first-time students who took and did not meet the Freshmen Assessment and Placement Standards

(ACT 1052) on the ACT, SAT, ASSET, COMPASS exams established by the Arkansas Higher Education Coordinating Board and have been assigned to remediation.

AVERAGE ACT COMPOSITE SCORES



| Fall Term | ACT Composite Score Intervals | | | | | | Total First-time Freshmen with ACT Scores | Average ACT Composite Score | Arkansas State Average for High School | US Average for High School Students |
|---|-------------------------------|---------|----------|----------|----------|----------|---|-----------------------------|--|-------------------------------------|
| | 1 to 6 | 7 to 12 | 13 to 18 | 19 to 24 | 25 to 30 | 31 to 36 | | | | |
| NWACC Scores for First-Time Freshmen | | | | | | | | | | |
| 2003 | 0 | 4 | 239 | 290 | 44 | 0 | 577 | 19.4 | 20.3 | 20.8 |
| 2004 | 0 | 3 | 221 | 295 | 52 | 1 | 572 | 19.7 | 20.1 | 20.9 |
| 2005 | 0 | 5 | 194 | 305 | 50 | 0 | 554 | 19.9 | 20.3 | 20.9 |
| 2006 | 0 | 4 | 221 | 305 | 55 | 1 | 586 | 19.8 | 20.6 | 21.1 |
| 2007 | 0 | 6 | 221 | 386 | 76 | 2 | 691 | 20.2 | 20.5 | 21.2 |
| 2008 | 0 | 5 | 218 | 412 | 75 | 2 | 712 | 20.2 | 20.8 | 21.1 |

| Arkansas Two-Year Colleges Scores for First-Time Freshmen | | | | | | | | | | |
|--|---|----|------|------|-----|---|-------|------|--|--|
| 2003 | 0 | 66 | 1414 | 1690 | 236 | 5 | 3,411 | 19.1 | | |
| 2004 | 1 | 66 | 1370 | 1584 | 240 | 5 | 3,266 | 19.2 | | |
| 2005 | 0 | 55 | 1182 | 1547 | 253 | 4 | 3,041 | 19.4 | | |
| 2006 | 0 | 58 | 1115 | 1585 | 265 | 5 | 3,028 | 19.6 | | |
| 2007 | 1 | 73 | 1256 | 1797 | 312 | 4 | 3,443 | 19.5 | | |

Average composite scores for Arkansas and U.S. provided by ACT and is based on all students taking the ACT exam.

*NOTE: In 2003 numbers were revised due to WestArk becoming 4-year institution

RETENTION RATES FOR FULL-TIME, FIRST-TIME FRESHMAN



Historical Retention Rates for Full-Time, First-Time Freshman

| Fall | Co-hort Size | Fall to Fall Retention After: | | | | | | | | | | | | | | | | | | | |
|---|--------------|-------------------------------|----------|------------------------|--------|-------------|----------|--------------------|--------|------------|----------|--------------------|--------|-------------|----------|--------------------|--------|------------|----------|--------------------|--------|
| | | First Year | | | | Second Year | | | | Third Year | | | | Fourth Year | | | | Fifth Year | | | |
| | | Native | Transfer | % First Year Retention | % Grad | Native | Transfer | % Annual Retention | % Grad | Native | Transfer | % Annual Retention | % Grad | Native | Transfer | % Annual Retention | % Grad | Native | Transfer | % Annual Retention | % Grad |
| NWACC | | | | | | | | | | | | | | | | | | | | | |
| 2000 | 375 | 57.3% | 4.3% | 61.6% | 0.5 | 37.9% | 7.2% | 45.1% | 3.5 | 18.1% | 10.7% | 28.8% | 10.1 | 10.0% | 11.9% | 22.0% | 14.6 | 6.9% | 9.3% | 16.3% | 19.2 |
| 2001 | 433 | 56.4% | 6.2% | 62.6% | 0.0 | 31.2% | 15.7% | 46.9% | 3.9 | 19.3% | 17.2% | 36.4% | 8.8 | 9.7% | 17.1% | 26.8% | 13.4 | 6.2% | 9.7% | 15.9% | 21.0 |
| 2002 | 411 | 56.9% | 4.4% | 61.3% | 0.5 | 32.9% | 10.7% | 43.7% | 1.7 | 16.6% | 13.9% | 30.5% | 5.4 | 12.4% | 12.4% | 24.9% | 9.5 | 7.8% | 10.2% | 18.0% | 15.9 |
| 2003 | 465 | 58.3% | 6.0% | 64.3% | 0.0 | 36.3% | 12.5% | 48.8% | 1.1 | 20.9% | 14.4% | 35.3% | 7.5 | 13.1% | 12.0% | 25.2% | 13.1 | | | | |
| 2004 | 511 | 56.6% | 3.6% | 60.5% | 0.4 | 33.7% | 9.0% | 42.7% | 2.3 | 21.7% | 13.1% | 34.8% | 6.1 | | | | | | | | |
| 2005 | 516 | 51.7% | 5.4% | 57.2% | 0.6 | 36.0% | 8.1% | 43.6% | 1.9 | | | | | | | | | | | | |
| 2006 | 552 | 56.7% | 3.6% | 60.3% | 0.7 | | | | | | | | | | | | | | | | |
| 2007 | 656 | (Available Spring 2008) | | | | | | | | | | | | | | | | | | | |
| 2008 | 668 | (Available Spring 2009) | | | | | | | | | | | | | | | | | | | |
| All Arkansas Public Two-Year Colleges* | | | | | | | | | | | | | | | | | | | | | |
| 2000 | 4,688 | 49.2% | 6.2% | 55.4% | 2.9 | 26.8% | 9.5% | 36.3% | 9.9 | 12.3% | 10.0% | 22.3% | 19.1 | 6.9% | 8.7% | 15.6% | 24.0 | 5.4% | 6.5% | 11.9% | 28.0 |
| 2001 | 5,336 | 51.4% | 5.2% | 56.7% | 3.2 | 25.9% | 9.6% | 35.5% | 12.5 | 11.9% | 10.2% | 22.1% | 21.6 | 6.9% | 8.2% | 15.0% | 26.9 | 5.0% | 5.2% | 10.2% | 31.2 |
| 2002 | 5,726 | 49.6% | 5.7% | 55.4% | 2.9 | 26.7% | 8.6% | 35.3% | 10.2 | 12.7% | 9.2% | 21.8% | 19.1 | 7.4% | 7.6% | 15.0% | 24.4 | 5.3% | 5.6% | 10.8% | 28.1 |
| 2003 | 6,107 | 48.0% | 5.2% | 53.2% | 5.3 | 25.2% | 8.4% | 33.6% | 12.7 | 12.4% | 8.1% | 20.5% | 20.8 | 7.3% | 7.5% | 14.9% | 25.8 | | | | |
| 2004 | 6,059 | 48.8% | 5.2% | 54.0% | 4.9 | 25.7% | 8.9% | 34.6% | 11.7 | 12.7% | 8.7% | 21.4% | 20.4 | | | | | | | | |
| 2005 | 6,179 | 46.9% | 5.4% | 52.3% | 4.8 | 25.3% | 8.1% | 33.4% | 12.5 | | | | | | | | | | | | |
| 2006 | 5,787 | 48.1% | 5.1% | 53.3% | 4.7 | | | | | | | | | | | | | | | | |
| 2007 | 6,630 | (Available Spring 2008) | | | | | | | | | | | | | | | | | | | |

*NOTE: Numbers were revised due to WestArk becoming 4-year institution

Note: Cohorts = First-time, full-time students

Natives = Students continuing to enroll in original institution

Transfers = Students continuing to enroll in an institution other than original college/university

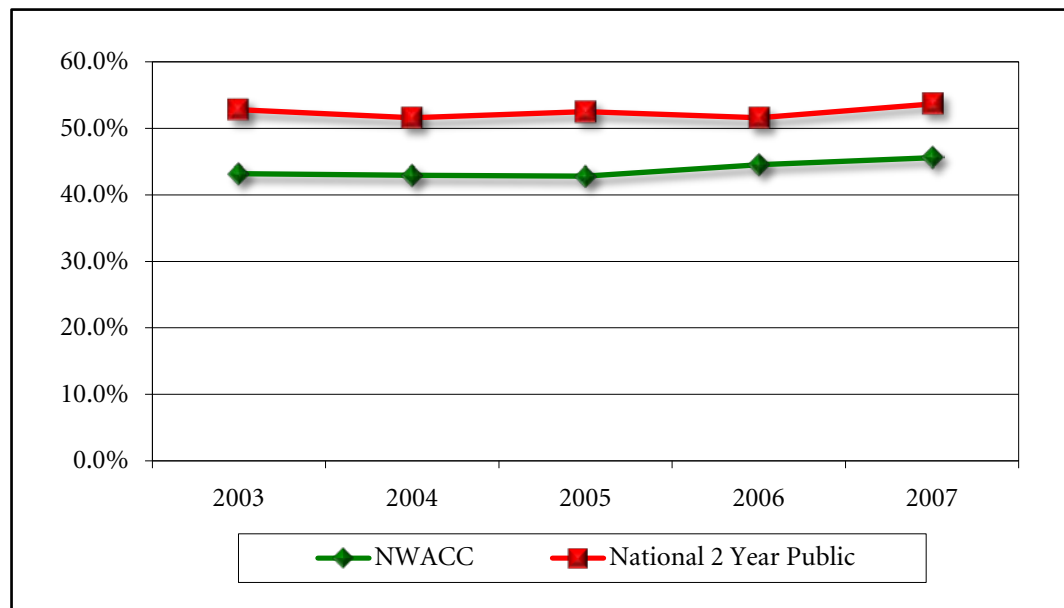
% Annual Retention = Proportion of the cohort that continues to be enrolled in a given year

% Graduated = Proportion of the cohort that has received a degree or certificate at original institution or at a transfer institution

Source: Report from ADHE

RETENTION RATES - ALL STUDENTS

| Fall | Headcount* | Returned the Next Fall | % Retention | National Public 2-Year College % Retention** |
|------|------------|------------------------|-------------|--|
| 2003 | 4,229 | 1,826 | 43.2% | 52.8% |
| 2004 | 4,462 | 1,917 | 43.0% | 51.6% |
| 2005 | 4,617 | 1,977 | 42.8% | 52.5% |
| 2006 | 4,744 | 2,113 | 44.5% | 51.6% |
| 2007 | 5,404 | 2,465 | 45.6% | 53.7% |



*Headcount without high school students or those students that graduated in the Academic Year

**Source: ACT, Inc.

| | Students | | | | | Dollars | | | | |
|-----------------------------|--------------|--------------|--------------|--------------|------------------|--------------------|--------------------|--------------------|---------------------|------------------|
| | FY 05 | FY 06 | FY 07 | FY 08 | Percent Increase | FY 05 | FY 06 | FY 07 | FY 08 | Percent Increase |
| Federal Grants | 1,245 | 1,372 | 1,473 | 1,882 | 27.8% | \$2,546,346 | \$2,750,188 | \$2,966,832 | \$3,941,670 | 32.9% |
| State Grants & Scholarships | 116 | 298 | 242 | 280 | 15.7% | \$144,419 | \$380,269 | \$377,567 | \$391,358 | 3.7% |
| Institutional Scholarships | 97 | 129 | 101 | 97 | -4.0% | \$61,581 | \$75,933 | \$73,868 | \$75,206 | 1.8% |
| Work Study | 52 | 61 | 69 | 72 | 4.3% | \$157,268 | \$151,448 | \$151,597 | \$175,012 | 15.4% |
| Federal Stafford Loans | 909 | 1,190 | 1,291 | 1,513 | 17.2% | \$4,088,933 | \$5,785,067 | \$6,040,998 | \$8,124,326 | 34.5% |
| TOTALS | 2,419 | 3,050 | 3,176 | 3,844 | 21.0% | \$6,998,547 | \$9,142,905 | \$9,610,862 | \$12,707,572 | 32.2% |
| % Students Receiving Aid | 26% | 23% | 25% | 35% | | | | | | |

Types of Financial Aid Available to NWACC Students

Federal Aid Programs

Pell Grants
 Supplemental Educational
 Opportunity Grants (SEOG)
 Stafford Student Loan
 (Subsidized and unsubsidized)
 Work Study
 Academic Competiveness Grant

State Programs

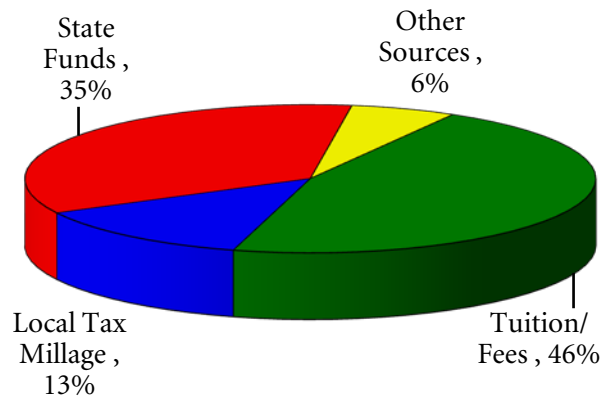
Arkansas Academic Challenge Scholarships
 Arkansas Workforce Improvement Grant
 Governor's Scholarship
 Law Enforcement Assistance Program
 Law Enforcement Officers Dependent Program
 Second Effort Scholarship
 GO! Opportunities Grant
 State Teacher Assistance Resource Program (STAR)

Institutional Scholarships

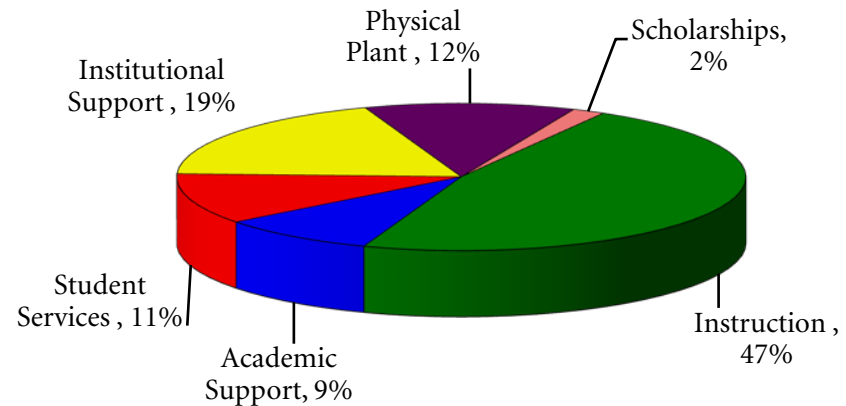
Over 40 institutional scholarships including the President & Trustee Scholarship

| | FY05 | FY06 | FY07 | FY08 | FY09 |
|------------------------------------|---------------|---------------|----------------|----------------|----------------|
| Beginning Year Balance | \$2.36 | \$1.60 | \$1.77 | \$1.56 | \$1.68 |
| Budgeted Operating Revenue | \$18.7 | \$21.8 | \$26.2 | \$28.1 | \$30.5 |
| Tuition/Fees | \$8.3 | \$10.5 | \$12.64 | \$12.22 | \$13.95 |
| Local Tax Millage | \$2.9 | \$3.1 | \$3.44 | \$3.90 | \$3.90 |
| State Funds | \$6.8 | \$7.8 | \$8.88 | \$10.74 | \$10.74 |
| Other Sources | \$0.7 | \$0.4 | \$1.27 | \$1.24 | \$1.92 |
| Budgeted Operating Expenses | \$19.4 | \$22.1 | \$26.23 | \$27.99 | \$30.29 |
| Instruction | \$9.8 | \$11.4 | \$12.88 | \$13.36 | \$14.30 |
| Academic Support | | | \$2.33 | \$2.24 | \$2.71 |
| Student Services | \$2.8 | \$2.8 | \$2.63 | \$2.93 | \$3.38 |
| Institutional Support | \$4.9 | \$5.3 | \$4.88 | \$5.45 | \$5.71 |
| Physical Plant | \$1.9 | \$2.6 | \$3.02 | \$3.58 | \$3.63 |
| Scholarships | | | \$0.49 | \$0.43 | \$0.56 |
| Ending Year Balance | \$1.6 | \$1.3 | \$1.77 | \$1.68 | \$1.91 |

Budgeted Operating Revenue



Budgeted Operating Expenses



\$ in millions

SUMMARY OF STUDENTS SERVED



Academic Year

Unduplicated headcounts

| Academic Year | Credit Students | Corporate Learning Students | Community Education Students | Adult Education Students | Regional Technical Center | Kid's Enrichment | Grand Total |
|---------------|-----------------|-----------------------------|------------------------------|--------------------------|---------------------------|------------------|-------------|
| 2001-02 | 6,372 | 1,911 | 3,532 | 2,491 | - | | 14,306 |
| 2002-03 | 7,011 | 4,263 | 884 | 2,050 | - | | 14,208 |
| 2003-04 | 7,183 | 3,633 | 1,167 | 2,139 | - | | 14,122 |
| 2004-05 | 7,792 | 2,917 | 1,347 | 2,837 | - | | 14,893 |
| 2005-06 | 8,217 | 2,725 | 1,404 | 2,885 | - | | 15,231 |
| 2006-07 | 8,695 | 1,915 | 1,152 | 3,694 | 340 | 250 | 16,046 |
| 2007-08 | 9,839 | 2,530 | 899 | 3,615 | 267 | 246 | 17,396 |

Academic Year

NWACC Academic Year is July 1 - June 30, comprised of Summer II, Fall, Spring, Summer I semesters.

ADHE

This is an acronym for the Arkansas Department of Higher Education. The ADHE has the authority to review, approve or discontinue degree programs at public colleges or universities.

Budgeted Operating Expense Categories (Source IPEDS website: <http://nces.ed.gov/ipeds/web2000/viewinstruction.asp?instID=299>)

Instruction - academic instruction, occupational and vocational instruction, community education, preparatory and adult basic education, and remedial and tutorial instruction conducted by the teaching faculty for the institution's students.

Academic Support - support services that are an integral part of the institution's primary missions of instruction, research, and public service. Includes expenses for museums, libraries, galleries, audio/visual services, ancillary support, academic administration, personnel development, and course and curriculum development.

Student services — admissions, registrar activities, and activities whose primary purpose is to contribute to students' emotional and physical well-being and to their intellectual, cultural, and social development outside the context of the formal instructional program.

Institutional support — day-to-day operational support of the institution, excluding expenses for physical plant operations. Includes expenses for general administrative services, executive direction and planning, legal and fiscal operations, and public relations/development.

Physical Plant — operations established to provide service and maintenance related to grounds and facilities used for educational and general purposes. Also includes expenses for utilities, fire protection, property insurance, and similar items.

Scholarships - outright grants to students selected and awarded by the institution.

Census Date

The end of the eleventh day of classes in a regular term and the end of the fifth day during each summer term.

CIP Code (Classification of Instructional Programs)

A numerical classification and standard terminology for secondary and postsecondary instructional programs. CIP codes are used by colleges nationally to report various instructional program data to the U. S. Department of Education and other government and higher education organizations.

Concurrent Credit Course

A course for which both high school and college/university credit is awarded to a high school student.

Continuing student

A student previously enrolled during the previous regular academic term at NWACC. Summer sessions are not considered to be a regular academic term.

Credit Hour

A unit of measure representing an hour (50 minutes) of instruction over a 16-week period in a semester. It is applied toward the total number of hours needed for completing the requirements of a degree, diploma, certificate, or other formal award.

Enrollment

A student who is counted on a headcount basis as registered on the census date for the reporting term.

Enrollment Status

A student's current attendance status in a postsecondary education institution. The following mutually exclusive categories are used: first-time entering undergraduate student, entering undergraduate transfer student, continuing student, readmitted student and high school student.

FICE Code

A six-digit identification code originally created by the Federal Interagency Committee on Education (FICE). It is used in IPEDS to identify institutions that are accredited at the college level by an agency recognized by the Secretary, U.S. Department of Education.

First-Time Freshman

An entering freshman who has never attended any college. Includes students enrolled in the fall term who attended college for the first time in the prior summer term. Also includes students who entered with advanced standing (college credits earned before graduation from high school).

Fiscal Year

A twelve-month period running from July 1st through the following June 30th.

GLOSSARY - CON'T

Full-Time Equivalent (FTE)

A statistic derived from the student credit hour (SSCH) production of an institution. The number of undergraduate FTE students for an academic term is obtained by dividing the total number of undergraduate student semester credit hours by 15. When computing an annual FTE, the student credit hours for all terms is summed and then divided by 30 undergraduate courses.

Full-Time Student

An undergraduate student enrolled for 12 or more semester credit hours in a term.

High School Student

A high school student who has not received a high school diploma or its equivalent but is enrolled in college-level courses.

IPEDS

The Integrated Postsecondary Education Data System conducted by the National Center for Education Statistics. IPEDS began in 1986 and involves annual data collections. Survey questionnaires are sent to all postsecondary institutions eligible for federal student financial aid, as determined by the Office of Postsecondary Education, U.S. Department of Education.

Off-Schedule

Refers to students who are enrolled in courses the first class meeting of which is after the 11th class day for Fall and Spring Semesters (census day). In the case of the summer sessions it is enrollment in courses the first class meeting of which occurs after the 5th class day (census day).

On-Schedule

Refers to students who are enrolled in courses the first class meeting of which is before the 11th class day for Fall and Spring Semesters (census day). In the case of the summer sessions it is enrollment in courses the first class meeting of which occurs before the 5th class day (census day).

Part-Time Student

Students enrolled for 1-11 credit hours.

Readmitted student

A student previously enrolled at NWACC but not enrolled during the regular academic term immediately preceding the current term. Disregards summer session.

Retention and Graduation Rates

Calculated using cohort of first time freshmen. The cohort is typically defined as the first-time full-time freshmen entering in the fall semester. The term "first-time" means that the student was not previously enrolled in a postsecondary institution, and the term "full-time" means that the student enrolled for a minimum of 12 credit hours in the entering semester.

SSCH - (Student Semester Credit Hours)

Credit hours generated by all students in a semester

Transfer Student

An undergraduate student entering NWACC for the first time with academic credit attempted or earned at another institution (whether or not the credit is accepted by NWACC). For reporting purposes, this category includes students enrolled in the fall term, who first enrolled as transfer students in the prior summer term.

Unduplicated Headcount

A student is counted only once during an academic year (Summer I term through Summer II term) regardless of how many terms the student registers for or how many different classes the student takes during that time period.