

NWACC

Learning For Living



FALL 2009 FACT BOOK



TABLE OF CONTENTS

Table of Contents.....	2
Introduction and Highlights.....	3

ORGANIZATION

Board of Trustees.....	4
Administration.....	4
Organization Chart.....	5
History, Role and Scope.....	6
Strategic Plan Outline.....	6
Accreditation.....	6
Mission and Values Statements	6
College Facilities	7

LEARNING PROGRAMS

Degree Programs.....	8
Degrees and Certificates Awarded.....	9
Licensure Test Results.....	10
Student Semester Credit Hour by CIP.....	11
Number of Sections of Courses Offered.....	12
Number of Faculty.....	12
Credit Hours Taught - FT & PT Faculty.....	13
Corporate and Continuing Education.....	14
Adult Education.....	15

STUDENTS

2008 and 2009 Headcount Summary Comparison.....	16
Historical Headcount Summary.....	17
Headcount Enrollment by Semester.....	18
Headcount by Enrollment Status.....	19
Headcount by Majors.....	20
Headcount by Race/Ethnicity.....	21
Headcount by Reason for Enrollment.....	22
Headcount by Residency.....	23
Washington County Facilities Enrollment.....	24
Headcount by Tuition Status.....	25
Student Semester Credit Hours by Semester.....	26
Student Semester Credit Hours by Tuition Status.....	27
Fall SSCH and FTE Enrollment.....	28
Annual SSCH and FTE Enrollment.....	29
High Schools in NWACC Service Area.....	30
Early College Experience - High School Based.....	31
Early College Experience - Career & Technical.....	32

REMEDIATION

Remediated First Time Freshmen.....	33
Average ACT Composite Scores.....	34

RETENTION

Retention Rates for Full-Time, First-Time Freshmen.....	35
Retention Rates for All Students.....	36

RESOURCES

Financial Aid.....	37
Financial Report Summary.....	38

SUMMARY

Summary of Students Served.....	39
Glossary.....	40

INTRODUCTION

The NorthWest Arkansas Community College Fact Book for Fall 2009 is produced by the Office of Institutional Research and outlines enrollment, faculty, financial and other comprehensive information for NorthWest Arkansas Community College.

All enrollment data in this document were based on the enrollment of the college at the end of the eleventh class day. All fiscal year data were collected as of June 30th, 2009. The definitions and guidelines used to compile this information are provided by the Integrated Postsecondary Education Data System (IPEDS) and the Arkansas Department of Higher Education. Definitions and guidelines unique to the institution will be noted on individual tables.

Copies of this document may be found in the offices of each College Cabinet Member, in the Office of Institutional Research and on the web at www.nwacc.edu/institutionalresearch.

The Fact Book will be updated prior to December 1 each year.

Inquiries and comments regarding this document may be directed to the Office of Institutional Research, NorthWest Arkansas Community College, One College Drive, Bentonville, AR 72712, by telephone at (479) 619-4399, or by e-mail to kpurdy@nwacc.edu or rtompkins1@nwacc.edu

HIGHLIGHTS FALL 2009

- Enrollment topped 8,000 for the first time in school history – 8,006 students.
- Headcount increased 11% and SSCH increased 15%. Student headcount has increased 52% in the last 5 years.
- 1,447 first-time freshmen make up over 18% of our student body.
- The federal government mandated new standards for race and ethnicity reporting. See the Headcount by Race/Ethnicity page for more details.
- “To earn a degree” or “To earn credits to transfer” are the reasons 76% of students attend NWACC.
- The majority of NWACC students (93%) live in Benton and Washington Counties.
- Over 20% of 2009 High School graduates from Rogers, Bentonville, and Pea Ridge enrolled at NWACC this fall.
- The remediation rate for English (40.4%) and Reading (32.3%) fell to their lowest level since 1999 and 2001, respectively.
- The fall-to-fall retention rate of all students (except 2009 NWACC graduates and high school students) rose to 47.5%. This is the highest retention level reached since the Fact Book began recording this information.
- 47% of our students received Federal and/or State Grant Financial Aid, a 34% increase from Fall 2008.
- For Academic Year 2009 (July 1, 2008 to June 30, 2009) NWACC served nearly 17,000 students through college-credit classes, workforce development classes, community education, adult education, as well as secondary students through the Regional Technology Center.

BOARD OF TRUSTEES

Members of the Board of Trustees of NorthWest Arkansas Community College were initially appointed by former Governor Bill Clinton. Board members are now elected by position in groups of three each even numbered year at the general election.

Board Members and the city they represent:

Chair Mr. Coleman Peterson Hollis Enterprises, LLC
Bentonville

Vice Chair Vacant*

Secretary Mr. Alex Vasquez Walmart Stores
Rogers

 Ms. Linda Bisbee Valley Homes, Inc
Rogers

 Ms. Joan Clifford Past Chair, Community Volunteer
Bentonville

 Mr. Johnny Haney Alliance Enterprises
Bentonville

 Mr. Mark Lundy Past Chair, BKD/Allard & Co.
Rogers

 Mr. Joe Spivey Liberty Bank of Arkansas
Rogers

 Mr. Mike Shupe CEI Engineering
Rogers

*Representative for Rogers

ADMINISTRATION

President

Senior Vice President for Advancement

Executive Dean for Strategic Initiatives & Board Relations

Vice President for Finance and Administration

Vice President for Learning & Learner Support Services

Interim Vice President for External Affairs

Vice President for Talent Management/IT

Dr. Becky Paneitz

Dr. Stephen Gates

Dr. Susan Holmes

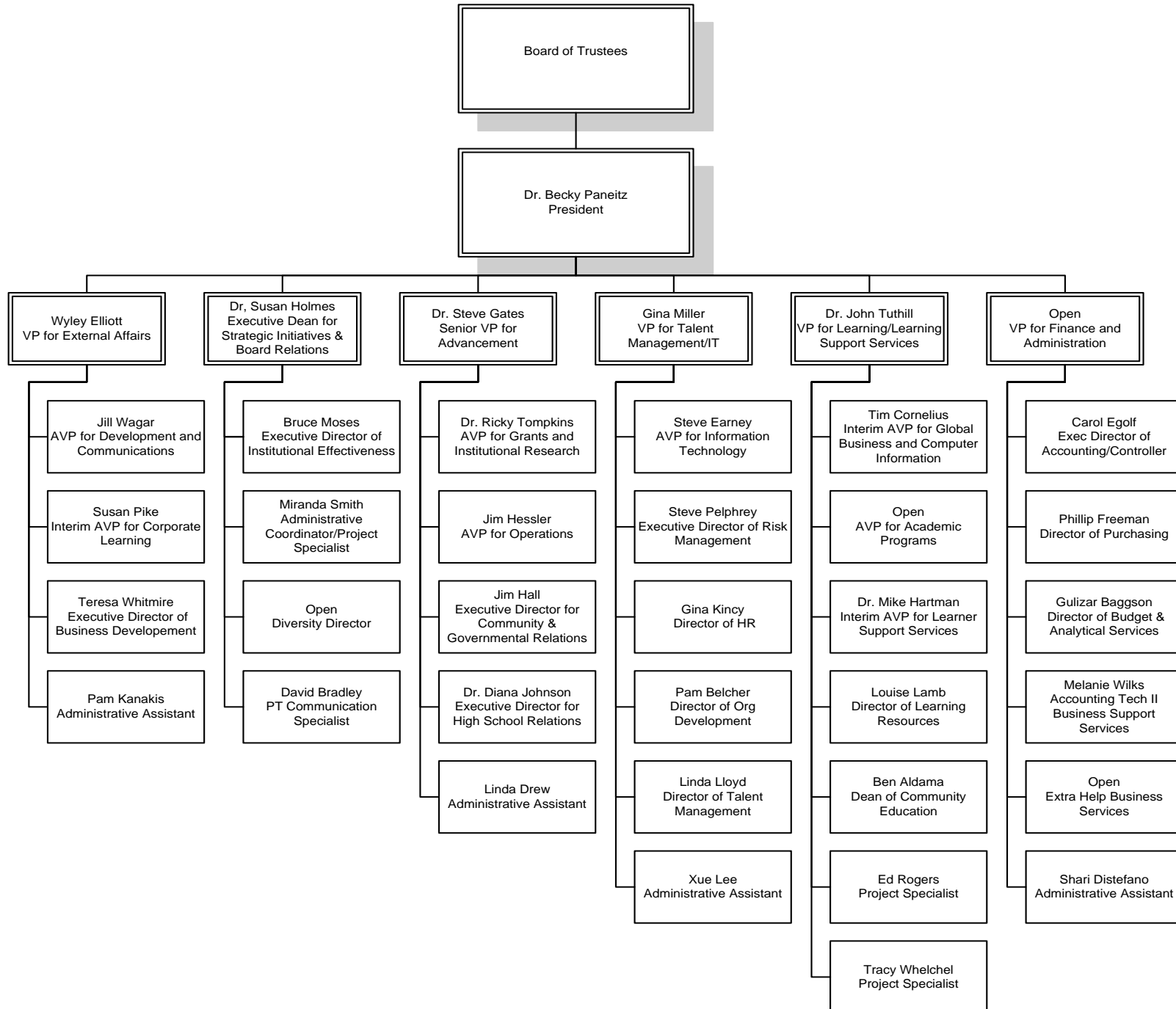
Vacant

Dr. John Tuthill

Mr. Wyley Elliot

Ms. Gina Miller

ORGANIZATIONAL CHART



HISTORY, ROLE AND SCOPE

The NorthWest Arkansas Community College District was authorized on August 15, 1989, when voters in the Rogers and Bentonville public school districts passed a 3-mil tax. The first classes were attended by more than 1,200 students in the fall of 1990 at high schools, chambers of commerce, municipal and leased facilities throughout the district.

Burns Hall opened its doors to just more than 2,400 students in August 1995. The main building is a multipurpose facility on 131 acres of land at Exit 86 of Interstate 540 on the Rogers and Bentonville, Arkansas, city limits. The 181,000 square-foot facility houses the College, Pauline Whitaker Library, lecture halls, laboratories for computers, science, nursing and allied health; music and art studios, and faculty and administrative offices.

Day, evening, and weekend classes are offered at the Burns Hall, as well as at locations throughout the service district. At the College's Shewmaker Center for Workforce Technologies, a 44,000 square-foot facility on Southeast Eagle Way, west of Burns Hall, customized programs are offered to area businesses. The College's Adult Education Program, which serves over 3,000 students a year, is located in Rogers. Opened in Bella Vista in the Fall of 2004 was College at the Crossings. The Regional Technology Center, an area secondary education center, opened August 2005. A new student center and parking garage opened in the Spring of 2007.

In serving a dynamic region of the state, NorthWest Arkansas Community College recognizes the importance of providing varied and abundant opportunities for learning.

NWACC is a comprehensive, learning-centered two-year college dedicated primarily to meeting the educational needs of its service area. NWACC offers a comprehensive education program including, but without limitation, technical occupational programs, freshman and sophomore programs for students to transfer to four-year colleges, specialty courses, professional continuing education courses, community enrichment classes, and business and industry training to meet the needs of the emerging and existing workforce. Part-time and full-time students are valued equally.

NWACC MISSION STATEMENT

NorthWest Arkansas Community College is a comprehensive, public two-year college that serves and strengthens the community through learning for living.

NWACC VALUES STATEMENT

In order to accomplish our mission and goals we

- Cherish academic, professional and personal integrity
- Facilitate continuous learning for students and stakeholders
- Value human resources over physical resources
- Develop the potential of the individual to achieve excellence
- Anticipate and respond to needs by encouraging innovative ideas and technologies
- Respect our differences and view them as a strength
- Advance knowledge through individual and team challenges

ENDS & GOALS - 2008-2010

NorthWest Arkansas Community College will become a premier educational provider in northwest Arkansas by developing a responsive educational delivery system customized to the needs of learners and receiving organizations.

1. For the learner community we will:
provide expanded access to high-quality educational opportunities for the population in general, especially for under-served learners in all age groups who are disconnected by choice or circumstance.
2. For the business community we will:
enhance partnerships and collaborations with business and industry.
3. For the owner community (taxpayers) we will:
enhance its capacity to diversify NWACC's resource base and function as a catalyst for comprehensive regional planning and development.
4. For the pre-kindergarten through grade 16 community we will:
provide support and leadership for partnerships with area educational institutions to provide learners with seamless opportunities preparing them for college and careers.
5. For the college community we will:
align the organizational infrastructure through continuous quality improvement and commitment to the principles of the Learning College.

Date Approved: April 10, 2006
Revised: August 2008

ACCREDITATION

In February 2000 NorthWest Arkansas Community College was granted continued accreditation for 10 years by The Higher Learning Commission and is a member of the North Central Association of Schools and Colleges, 312-263-0456, www.ncahigherlearningcommission.org.

In July 2006, NWACC was approved for the Academic Quality Improvement Program (AQIP) process of re-accreditation. AQIP infuses the principles and benefits of continuous improvement into the culture of colleges and universities by providing an alternative process through which an already-accredited institution can maintain its accreditation from the Higher Learning Commission.

FACILITIES

Main Campus

NWACC Burns Hall & Student Center
One College Drive
Bentonville, AR 72712
479-636-9222 / 1-800-995-6922

Shewmaker Center For Workforce Technologies

1100 S.E. Eagle Way
Bentonville, AR 72712
479-936-5175

Adult Education Center

2800 North Second Street
Rogers, AR 72756
479-986-6911

College at the Crossing

1801 Forest Hills Boulevard
Highlands Crossing Center
Bella Vista, AR 72714
479-855-1903

Regional Technology Center

2305 Old Farmington Road
Fayetteville, AR 72701
479-444-3060

Washington County Center

Central Plaza
693 White Road, Suite B
Springdale, AR 72764
479-927-3330
479-936-5131

Corporate Learning Fayetteville

4004 N College Ave
Fayetteville, AR 72701
479-718-7571

Western Benton County RTC*

201 South Giles
Gentry, AR 72734

*Regional Technology Center and Adult Education Department satellite branch on the campus of Gentry Public Schools. Opened August 20, 2007.

Currently under construction

Shewmaker Center for Global Business Development

*1100 S.E. Eagle Way
Bentonville, AR 72712
479-936-5175*

DEGREE PROGRAMS

Associate of Applied Science (AAS) Degrees

Two-year degree designed for students seeking concentrated training in a chosen career area to enter the workforce directly after graduation.

Aviation Technology	Criminal Justice
Business Management	Culinary Arts
Accounting Option	Early Childhood Education
Banking & Finance Option	Electronics Technology
Entrepreneurship Option	EMT-Paramedic
General Business Option	Environmental & Regulatory Science
Logistics Management Option	Environmental Mgmt Option
Retail Option	Safety, Health & Hazardous Materials Mgmt
Computer Aided Design	Fire Science
Architectural Design Option	Graphic Design
Civil Design Option	Homeland Security & Emergency Mgmt
Landscape Design Option	Law Enforcement
Computer Information Systems	Legal Assistant/Paralegal
Computer Networking Option	Nursing
Computer Programming Option	Physical Therapist Assistant
Information Mgmt & Applications Option	Respiratory Therapy

Transfer Degrees

Associate of Arts (AA)

The Associate of Arts degree is a transfer degree designed for the student who wishes to major in the liberal arts. Courses taken in the approved core curriculum will also apply toward baccalaureate degree requirement at most four-year institutions.

Associate of Science (AS)

The Associate of Science Degree is a transfer degree designed for the student who wishes to major in engineering, agriculture, or the sciences. NWACC offers a general AS degree as well as one with emphasis in one of these areas:

<i>Agriculture, Food and Life Sciences</i>	<i>Science Emphasis</i>
<i>Aviation Science</i>	<i>Walton College of Business Option</i>
<i>Business Emphasis</i>	

Associate of Arts in Teaching (AAT)

The Associate of Arts Teaching degree is a transfer degree which comprises the general education program in the education field. Courses taken in the approved core curriculum will also apply toward baccalaureate degree requirement at most four-year institutions. This degree concentrates in the P - 4 Education area.

Associate and Certificate of General Studies

The General Studies program is designed for students who wish to tailor a program to meet their personal educational enrichment goals. This is not intended to transfer.

Technical Certificate Programs

Accounting Technology
Baking Arts
Business Management
Culinary Arts
Dental Assisting
EMT Paramedic
Entrepreneurship
Environmental and Regulatory Science
General Business
Homeland Security & Emergency Management
Logistics Management
Networking
Paraeducators of Special Needs Learners

Certificate of Proficiency Programs

Computer Aided Design
Architectural Option
Civil Option
Landscape Design Option
Child Development Associate (CDA)
Crime Prevention and Corrections
Early Childhood Development Specialist
EMT Basic
Environmental Management & Reg Science
Environmental Management/GIS Technician
Forensic Science
Homeland Security & Emergency Management
Hospitality Management
Law Enforcement
Networking
Retail Management
Safety & Health
Tax Specialist

DEGREES AND CERTIFICATES AWARDED SUMMARY

BY ACADEMIC YEAR

Degrees Awarded	2004-2005	2005-06	2006-07	2007-08	2008-09
AAS Degrees					
Aviation	1	2		1	2
Business Management	20	21	15	17	23
Computer Aid Drafting and Design	11	2		7	2
Computer Information Systems	10	11	11	15	13
Criminal Justice	7	6	5	11	5
Early Childhood Education	3	2	4	5	3
Electronic Technology				1	2
Emergency Medical Technology-Paramedic	1	2	4	3	5
Environmental Reg, Safety, and Haz Mat	2	1	3	5	5
Fire Science Administration and Tech	1	7	1	10	5
Graphic Design	10	10	9	6	8
Homeland Security & Emergency Mgmt	-	-	-	2	4
Legal Assistance/Paralegal Studies	3	8	7	10	9
Nursing	40	27	48	64	71
Physical Therapy Assistant	6	6	10	8	11
Respiratory Therapist	14	7	19	12	13
TOTAL AAS Degrees	129	112	136	177	181
General Studies					
General Education AGS	-	13	15	13	21
TOTAL AGS Degrees		13	15	13	21
Transfer Degrees					
General Education AA	41	54	63	100	103
AS	85	116	88	164	173
AS-Agriculture	2		1		
AAT (Teaching)	-	-	4	13	25
TOTAL AA & AS Degrees	128	170	156	277	301
Certificates					
Aviation Maintenance Airframe		7	10	3	7
Aviation Maintenance Powerplant		8	5	3	9
Aviation Maintenance		18		1	7
Aviation Management		1			
CAD:Architecture	2	1	7	6	10
CAD:Engineering	2	2			
Child Dev Associate (CDA) Training	-	-	-	1	11
Crime Prevention & Corrections	-	-	1	2	
Culinary Arts	-	-	-	2	3
Early Childhood Dev Specialist	-	-	-	10	
Emergency Medical Technology - Basic	51	73	52	60	57
Emergency Medical Tech - Paramedic	2	10	11	16	15
Environmental Science-Tech Certificate	3	1		3	6
Environmental Science-Cert of Proficiency	2	1	1		
Forensic Science	-	-	-	3	1
General Business	-	-	-	-	5
General Studies	-	1	-	25	1
Homeland Security & Emergency Mgmt	-	-	-	2	1
Hospitality Management	-	-	8	1	
Law Enforcement	-	-	1	1	3
Marketing Analyst #	52	#	-	-	
Retail Management					1
Safety & Health	-	-	-	4	5
TOTAL Certificates	114	123	96	143	142
Total Degrees and Certificates*	371	418	403	610	645
GED's	236	344	380	462	430

*NOTE: This table reflects only students who completed degrees between July 1 and June 30 of each academic year

#moved to non-credit

LICENSURE AND CERTIFICATION PASS RATES

Year	NWACC Exam Takers	# of First Time NWACC Testers Passing Exam	NWACC Pass Rate Percentage	State Average	National Average
National Council Licensure Examination - Registered Nurse					
2005	30	27	90.0%	88.7%	86.2%
2006	27	26	96.3%	87.9%	87.5%
2007	48	47	97.9%	90.5%	87.6%
2008	60	59	98.3%	86.1%	88.2%
2009	Available late fall 2009				
National Registry of EMT-Paramedic Licensure Examination					
2004	7	6	85.7%	24.0%	64.0%
2005	8	8	100.0%	48.0%	64.0%
2006	17	17	100.0%	68.0%	68.0%
2007	11	9	81.8%	36.0%	65.0%
2008	11	11	100.0%	33.0%	63.0%
2009	12	12	100.0%	42.0%	68.0%
Arkansas Fire Academy Certification Examination					
2005	8	8	100.0%	-	-
2006	7	7	100.0%	-	-
2007	12	11	91.7%	-	-
2008	6	6	100.0%	-	-
2009	6	6	100.0%	-	-
National Physical Therapist Assistant Exam (NTPAE)					
2005	6	6	100.0%	72.1%	73.7%
2006	6	6	100.0%	65.1%	74.6%
2007	11	11	100.0%	82.1%	81.2%
2008	13	13	100.0%	n/a	81.0%
2009	Available Spring 2010				
Registered Respiratory Therapist Exam					
2005*	13	8	61.5%	-	79.3%
2006	9	5	55.6%	-	79.6%
2007	17	9	52.9%	-	79.4%
2008	13	10	76.9%	-	79.4%
2009	11	8	72.7%	-	74.0%

*Changed programs and tests from CRT (Certified) to RRT (Registered)

STUDENT SEMESTER CREDIT HOUR PRODUCTION BY DEPARTMENT

BY ACADEMIC YEAR

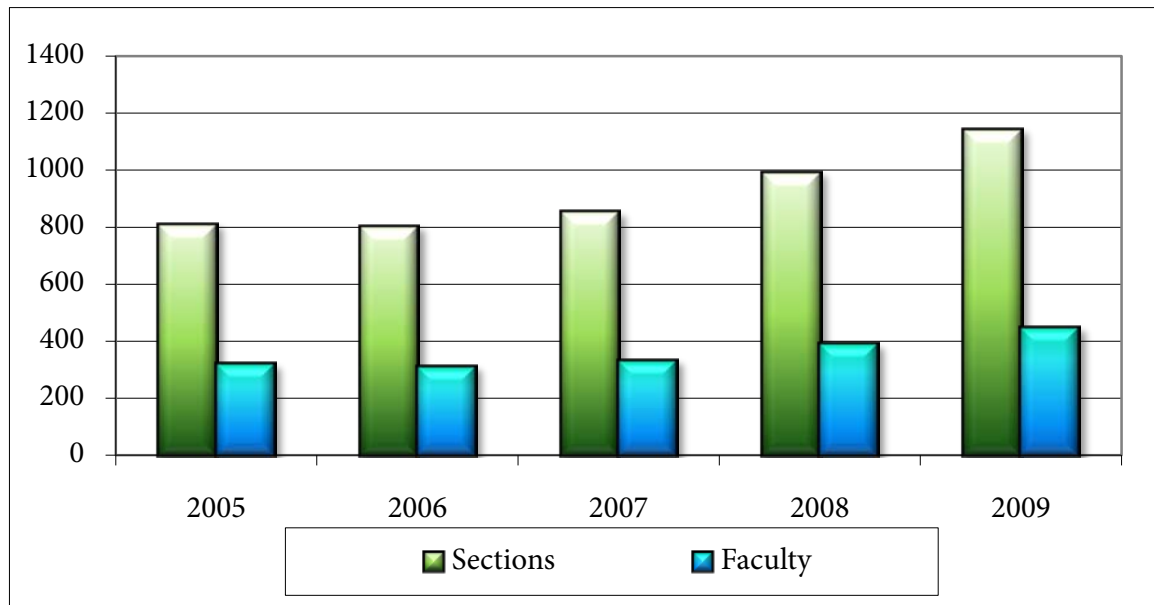
CIP Code	2004-05		2005-06		2006-07		2007-08		2008-09		% Growth	
	SSCH	% of Total Cr Hours	SSCH	% of Total Cr Hours	SSCH	% of Total Cr Hours	SSCH	% of Total Cr Hours	SSCH	% of Total Cr Hours	One Year	Five Year
1 Agricultural Sciences	129	0.13%	145	0.14%	229	0.21%	260	0.21%	503	0.35%	1	289.92%
32 Basic Skills	9,940	10.34%	9,665	9.54%	9,841	9.16%	11,769	9.43%	13,152	9.26%	0	32.31%
Prep for College Reading, College Reading, College Intensive English Program, Foun of Writing, Study Skills, Pre Algebra, Beginning Algebra, Intermediate Algebra												
3-26 Biological Sciences/Life Sci	7,893	8.21%	8,744	8.63%	9,336	8.69%	11,996	9.61%	13,794	9.72%	0	74.76%
Biology, Botany, Environmental Science, Life Science												
52 Business Mgmt & Adm Services	9,214	9.59%	9,118	9.00%	9,398	8.75%	10,422	8.35%	12,745	8.98%	0	38.32%
Accounting, Economics Banking and Finance, Business Adm, Business Law Hospitality Mgmt, Mkt Analyst, Statistics, Office Systems Support												
9 Communications	396	0.41%	399	0.39%	390	0.36%	345	0.28%	333	0.23%	0	-15.91%
Communications, Journalism												
11 Computer & Information Serv	6,132	6.38%	5,400	5.33%	5,862	5.46%	7,173	5.75%	8,430	5.94%	0	37.48%
Computer Information, CISCO, Networking												
13-31-34 Education/Physical Education	2,077	2.16%	2,390	2.36%	2,649	2.47%	3,006	2.41%	3,371	2.37%	0	62.30%
Health Science, Curriculum & Instruction, Physical Education												
15-47-48-49 Engineering & Related Tech	1,548	1.61%	2,557	2.52%	2,583	2.41%	2,275	1.82%	2,068	1.46%	0	33.59%
Aviation Science, CAD, Health & Safety												
23 English Language & Literature/Letters	13,668	14.22%	13,923	13.74%	15,636	14.56%	17,445	13.98%	19,131	13.47%	0	39.97%
Communications, English												
16 Foreign Language & Literatures	1,893	1.97%	1,929	1.90%	1,890	1.76%	2,121	1.70%	2,271	1.60%	0	19.97%
Foreign Language, French, German, Spanish												
51 Health Professions & Related Services	3,882	4.04%	4,941	4.87%	5,942	5.53%	5,891	4.72%	6,894	4.86%	0	77.59%
Allied Health Sciences, Emergency Medical Services, Nursing, Physical Therapy, Respiratory Care												
22 Law and Legal	488	0.51%	511	0.50%	616	0.57%	694	0.56%	764	0.54%	0	56.56%
24 Liberal Arts & Science & General Studies	132	0.14%	123	0.12%	138	0.13%	219	0.18%	291	0.20%	0	120.45%
General Studies, Humanities												
27 Mathematics	9,294	9.67%	10,582	10.44%	11,508	10.72%	13,702	10.98%	15,853	11.17%	0	70.57%
Mathematics												
38 Philosophy and Religion	1,815	1.89%	2,058	2.03%	2,100	1.96%	2,487	1.99%	2,820	1.99%	0	55.37%
Philosophy												
40 Physical Sciences	4,265	4.44%	4,537	4.48%	5,115	4.76%	5,207	4.17%	5,861	4.13%	0	37.42%
Chemistry, Geology,												
43 Protective Services	1,281	1.33%	1,256	1.24%	1,354	1.26%	1,634	1.31%	1,988	1.40%	0	55.19%
Criminal Justice, Fire Services												
42 Psychology	4,338	4.51%	4,977	4.91%	5,079	4.73%	6,288	5.04%	6,753	4.76%	0	55.67%
44-45-54 Social Sciences and History	11,668	12.14%	11,659	11.50%	11,130	10.36%	14,038	11.25%	16,215	11.42%	0	38.97%
Anthropology, Geography, History, Political Science, Social Work, Sociology,												
50 Visual and Performing Arts	5,296	5.51%	5,522	5.45%	5,720	5.33%	6,789	5.44%	7,547	5.32%	0	42.50%
Art History, Art, Drama, Music												
19-20 Vocational Home Economics	779	0.81%	918	0.91%	879	0.82%	1,054	0.84%	1,194	0.84%	0	53.27%
Early Childhood Education												
Total SSCH	96,128		101,354		107,395		124,815		141,978		0	47.70%

Source: ADHE SIS Database

NUMBER OF SECTIONS OF COURSES OFFERED / NUMBER OF FACULTY

FALL SEMESTER

Fall	Sections Offered	One Year % Growth	Five Year % Growth	Number of Teaching Faculty	One Year % Growth	Five Year % Growth	Average Class Size
2005	810	10.1%	32.1%	319	6.0%	29.7%	17.8
2006	804	-0.7%	21.6%	311	-2.5%	20.5%	18.8
2007	853	6.1%	26.7%	333	7.1%	24.7%	19.8
2008	993	16.4%	34.9%	391	17.4%	29.9%	19.6
2009	1,143	15.1%	41.1%	449	14.8%	40.8%	19.5

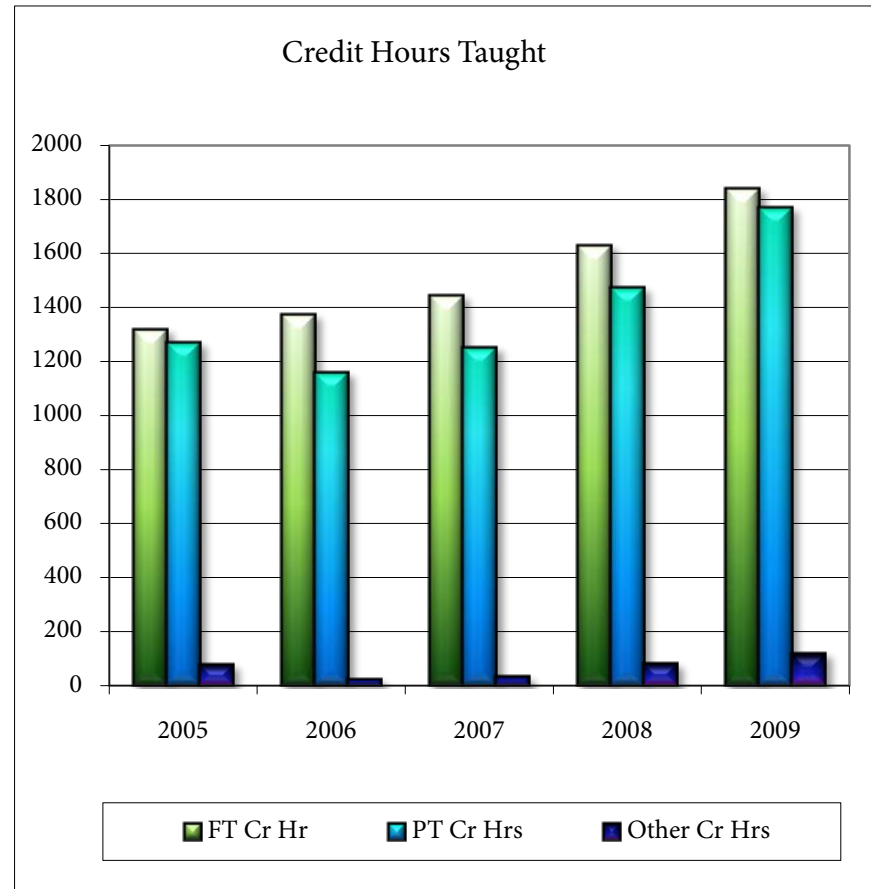
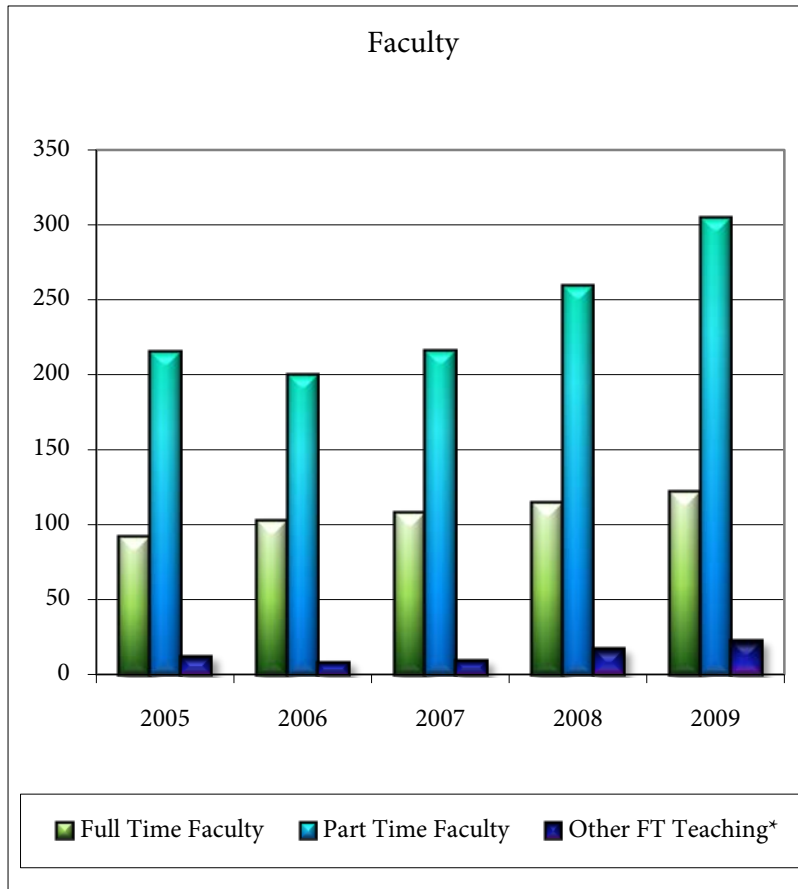


NOTE: Average class size includes independent study and college courses offered on high school campuses.

CREDIT HOURS TAUGHT BY FULL TIME & PART TIME FACULTY

FALL SEMESTER

Fall	Full Time Faculty	FT Cr Hr	% Taught by FT	Part Time Faculty	PT Cr Hrs	% Taught by PT	Other FT Teaching*	Other Cr Hrs	% Taught by Other
2005	92	1318	49.5%	215	1269	47.6%	12	77	2.9%
2006	103	1372	53.7%	200	1160	45.4%	8	23	0.9%
2007	108	1444	52.9%	216	1252	45.9%	9	32	1.2%
2008	115	1628	51.1%	259	1475	46.3%	17	82	2.6%
2009	122	1840	49.3%	305	1772	47.5%	22	118	3.2%



*Other FT Teaching-Administrative and support personnel who taught class(es)

CORPORATE LEARNING

BY ACADEMIC YEAR

Total number of students served by Corporate Learning

	2005	2006	2007	2008	2009
Registrations	6,189	7,054	6,306	5,729	3,569
Headcount (unduplicated)	4,244	4,129	3,317	3,675	2,543
Number of Sections of Classes	480	700	668	667	623

Corporate Education

	2005	2006	2007	2008	2009
Registrations	3,962	4,277	2,802	3,764	2,377
Headcount (unduplicated)	2,738	2,725	1,915	2,530	1,587
Number of Sections of Classes	291	501	389	484	499
Number of Businesses Served	180	191	158	145	127

Allied Health Non-Credit Classes

	2005	2006	2007	2008	2009
Registrations	179	205	125	168	91
Headcount (unduplicated)	159	150	113	161	82
Number of Sections of Classes	20	16	14	17	10

Personal and Professional Education

	2005	2006	2007	2008	2009
Registrations	1,943	1,350	1,889	547	565
Headcount (unduplicated)	1,259	867	924	430	412
Number of Sections of Classes	166	107	155	67	85

Early Childhood Education 'Caregiver Certification'

	2005	2006	2007	2008	2009
Registrations	0	294	242	386	490
Headcount (unduplicated)	0	204	191	348	428
Number of Sections of Classes	0	13	12	18	25

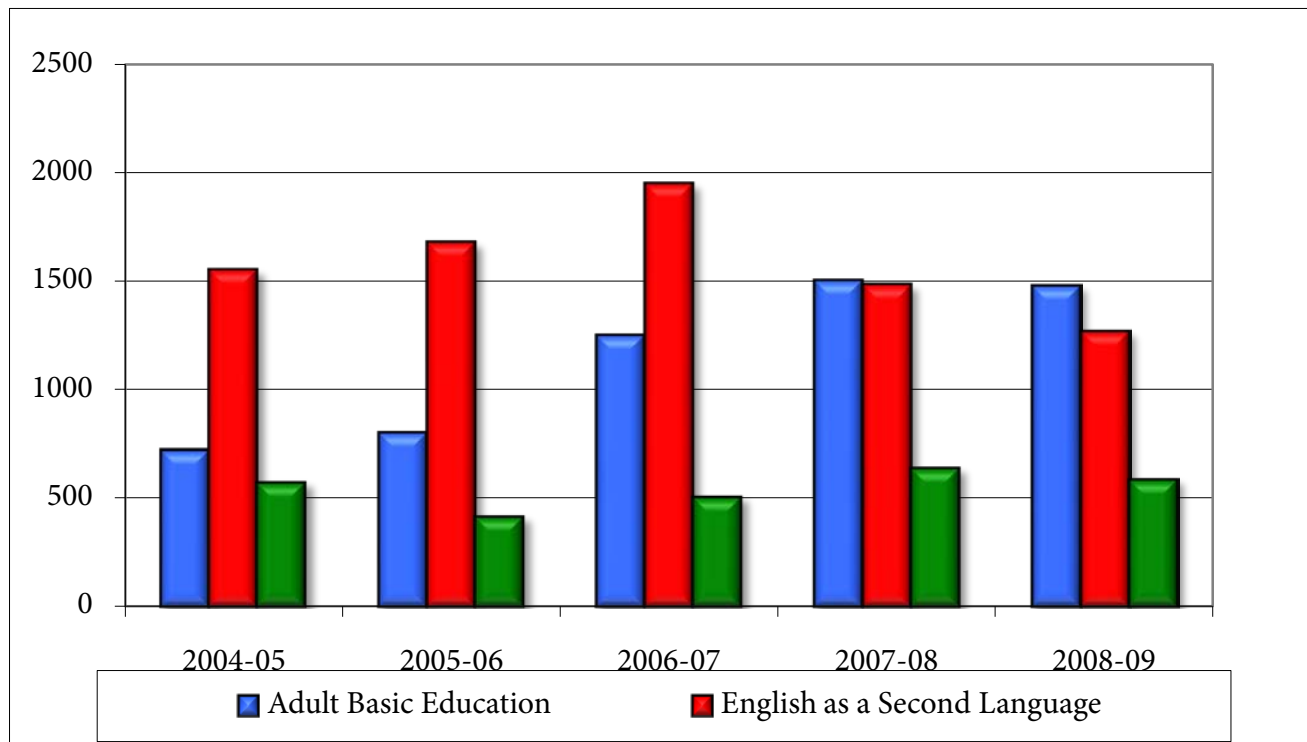
KEEP (Kid's Enrichment) and Kid's College

	2005	2006	2007	2008	2009
Registrations	105	928	1248	864	46
Headcount (unduplicated)	88	183	250	246	46
Number of Sections of Classes	3	63	99	81	4

ADULT EDUCATION ENROLLMENTS

Adult Education offers non-credit classes designed to teach and review academic skills culminating with preparation for taking the High School Equivalence (GED) test battery. Other areas such as English as a Second Language (ESL) and computers are also offered.

Program	2004-05	2005-06	2006-07	2007-08	2008-09	5 Year % Change
Adult Basic Education	722	800	1,248	1,501	1,476	104%
English as a Second Language	1,548	1,675	1,946	1,481	1,266	-18%
Adult Secondary Education	567	410	500	633	580	2%
Total Students Served	2,837	2,885	3,694	3,615	3,322	17%
Total GEDs Awarded	236	344	380	462	430	82%



HEADCOUNT ENROLLMENT SUMMARY

FALL 2008 AND FALL 2009

		Fall 2008		Fall 2009		Fall 2008-09
		Number	Percent	Number	Percent	Percent Change
Total Headcount		7,216		8,006		10.9%
FTE		4,082		4,700		15.1%
Enrollment Status	Full-Time	2,466	34.2%	3,034	37.9%	23.0%
	Part-Time	4,750	65.8%	4,972	62.1%	4.7%
Gender	Male	2,999	41.6%	3,341	41.7%	11.4%
	Female	4,217	58.4%	4,665	58.3%	10.6%
Residence	Benton County	3,943	54.6%	4,295	53.6%	8.9%
	Washington County	2,730	37.8%	3,137	39.2%	14.9%
	Other In-State	312	4.3%	335	4.2%	7.4%
	Out-of-State	231	3.2%	239	3.0%	3.5%
Tuition Status	In-District	3,141	43.5%	3,489	43.6%	11.1%
	Out-of-District	3,690	51.1%	4,164	52.0%	12.8%
	Out-of-State	255	3.5%	210	2.6%	-17.6%
	Contiguous	58	0.8%	71	0.9%	22.4%
	International	72	1.0%	72	0.9%	0.0%
*Ethnicity/Race	Hispanic or Latino			868	10.8%	
	Non-Hispanic Race:					
	American Indian/Alaskan Native			159	2.0%	
	Asian			229	2.9%	
	Black or African American			175	2.2%	
	Native Hawaiian/Pacific Islander			16	0.2%	
	White			6,261	78.2%	
	2 or more races			12	0.1%	
	Unknown			189	2.4%	
Non-Resident Alien			97	1.2%		
Age	<18	531	7.4%	626	7.8%	17.9%
	18-19	1,645	22.8%	1,600	20.0%	-2.7%
	20-21	1,289	17.9%	1,470	18.4%	14.0%
	22-24	1,166	16.2%	1,276	15.9%	9.4%
	25-29	1,029	14.3%	1,155	14.4%	12.2%
	30-34	588	8.1%	690	8.6%	17.3%
	35-44	635	8.8%	752	9.4%	18.4%
	45-54	248	3.4%	337	4.2%	35.9%
	55-64	62	0.9%	75	0.9%	21.0%
	>=65	23	0.3%	25	0.3%	8.7%
	AVERAGE AGE*	25.7		26.2		
	MEDIAN AGE*	22.5		23.0		

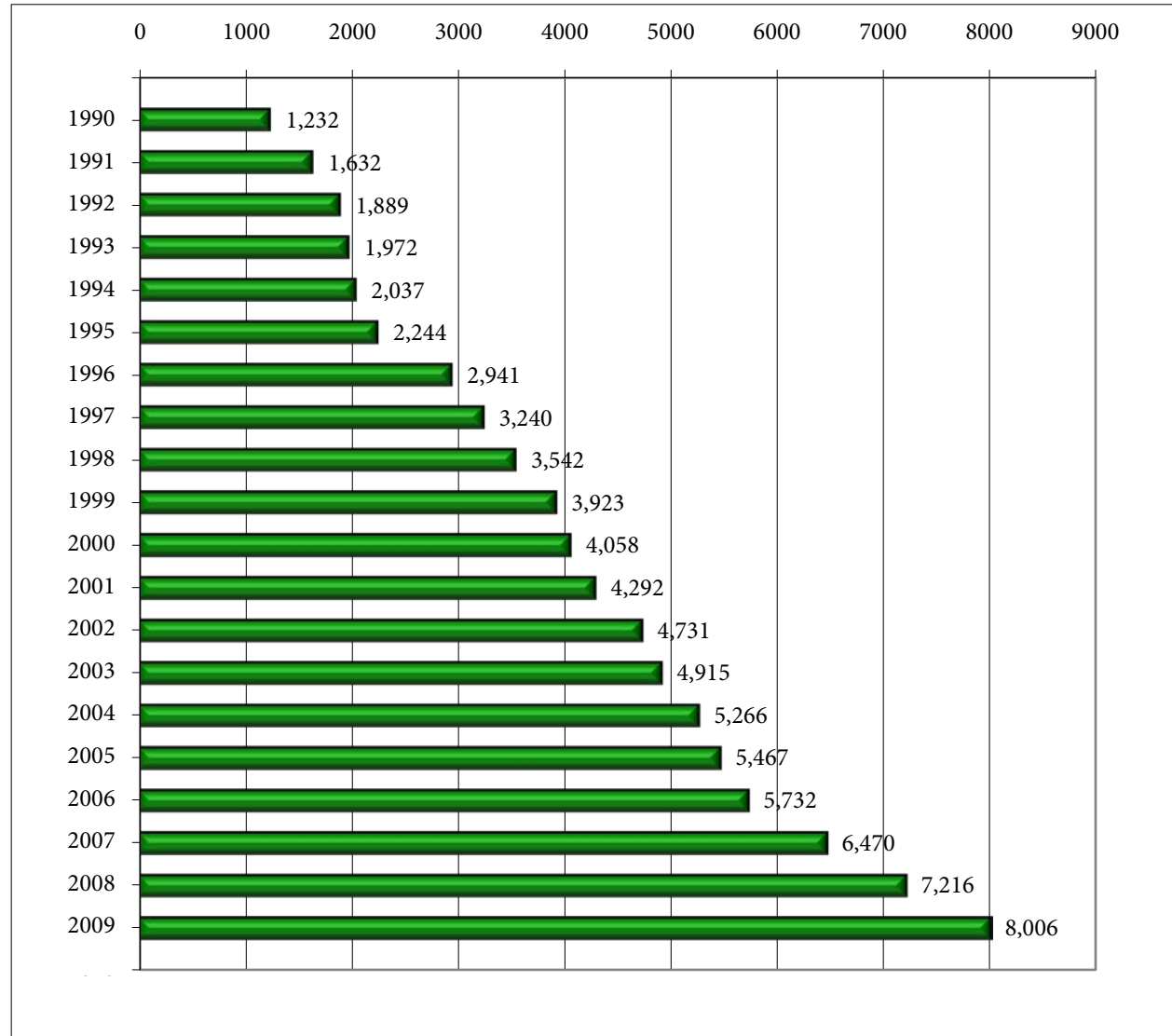
*see note on Ethnicity/Race table

*NOTE: Average and Median Age figures do not include High School Students

HISTORICAL HEADCOUNT SUMMARY

Fall 1990 to Fall 2008

Year	Total Headcount**	Total % Change
1990	1,232	
1991	1,632	32.5%
1992	1,889	15.7%
1993	1,972	4.4%
1994	2,037	3.3%
1995	2,244	10.2%
1996	2,941	31.1%
1997	3,240	10.2%
1998	3,542	9.3%
1999	3,923	10.8%
2000	4,058	3.4%
2001	4,292	5.8%
2002	4,731	10.2%
2003	4,915	3.9%
2004	5,266	7.1%
2005	5,467	3.8%
2006	5,732	4.8%
2007	6,470	12.9%
2008	7,216	11.5%
2009	8,006	10.9%



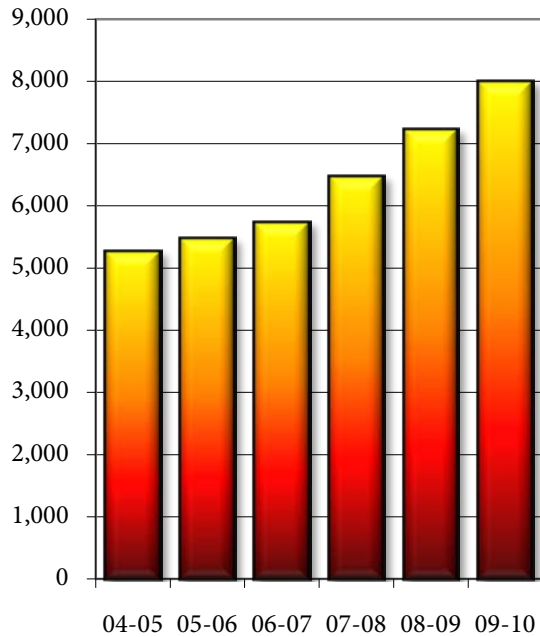
Source: Arkansas Department of Higher Education

**1990-94 Source: Registrar's In-House Reports

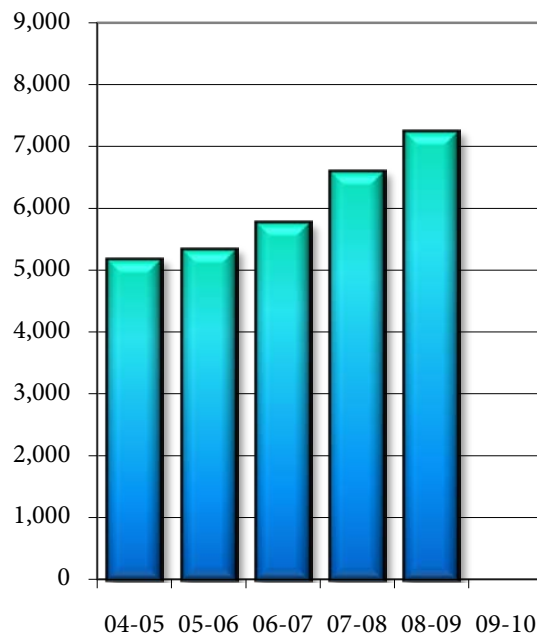
HEADCOUNT ENROLLMENT BY SEMESTER

Year	Fall Headcount*	Fall to Fall % Change	Spring Headcount*	Sp to Sp % Change	Summer I Headcount	Summer II Headcount	Total Summer	Total Summer % Change
04-05	5,266	7.1%	5,171	12.4%	1,381	762	2,143	16.8%
05-06	5,467	3.8%	5,330	3.1%	1,550	753	2,303	7.5%
06-07	5,732	4.8%	5,756	8.0%	1,753	842	2,595	12.7%
07-08	6,470	12.9%	6,594	14.6%	2,101	1,072	3,173	22.3%
08-09	7,216	11.5%	7,244	9.9%	2,392	1,359	3,751	18.2%
09-10	8,006	10.9%						

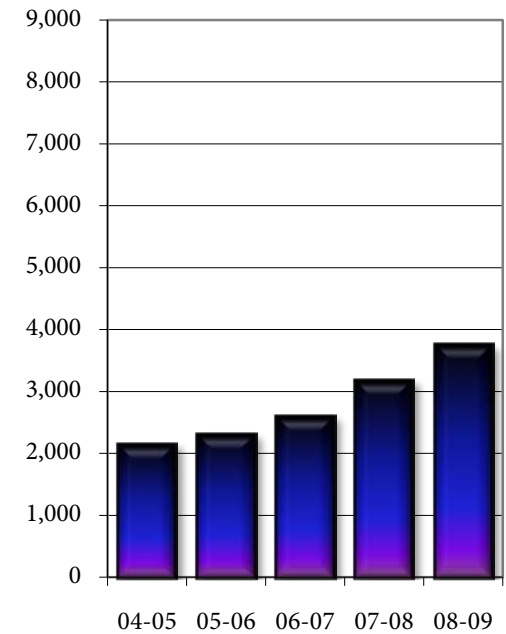
Fall Headcount



Spring Headcount



Summer Headcount

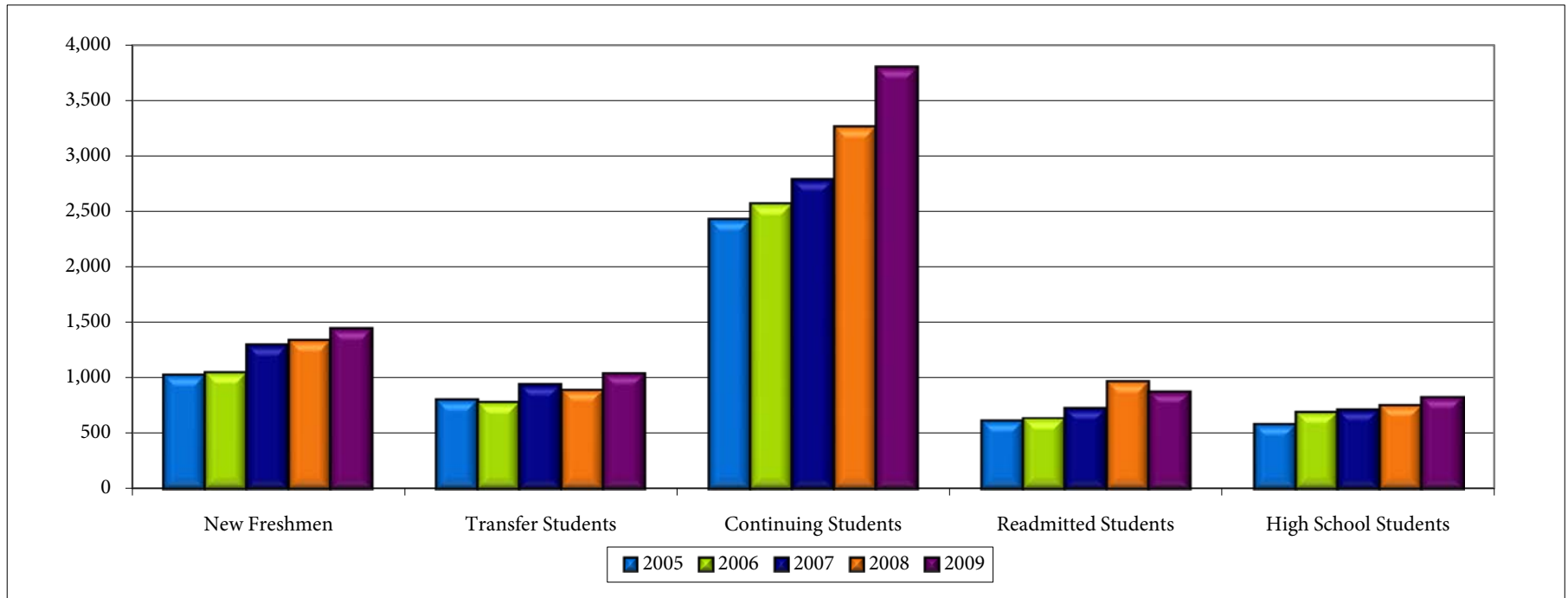


*NOTE: Off schedule classes are not included, such as Late Start and second 8-week

HEADCOUNT BY ENROLLMENT STATUS

FALL SEMESTER

Fall	New Freshmen			Transfer Students			Continuing Students			Readmitted Students			High School Students			Total
	Count	% of Total	Percent Change	Count	%	Percent Change	Count	%	Percent Change	Count	%	Percent Change	Count	%	Percent Change	
2005	1,029	18.8%	-3.2%	805	14.7%	13.4%	2,430	44.4%	5.3%	617	11.3%	-2.5%	586	10.7%	6.2%	5,467
2006	1,051	18.3%	2.1%	781	13.6%	-3.0%	2,568	44.8%	5.7%	638	11.1%	3.4%	694	12.1%	18.4%	5,732
2007	1,299	20.1%	23.6%	941	14.5%	20.5%	2,785	43.0%	8.5%	729	11.3%	14.3%	716	11.1%	3.2%	6,470
2008	1,340	18.6%	3.2%	893	12.4%	-5.1%	3,258	45.1%	17.0%	969	13.4%	32.9%	756	10.5%	5.6%	7,216
2009	1,447	18.1%	8.0%	1,044	13.0%	16.9%	3,805	47.5%	16.8%	879	11.0%	-9.3%	831	10.4%	9.9%	8,006



New: First-time entering undergraduate

Transfer: Transferred to NWACC from another college or university

Continuing: Continued enrollment from previous semester

Readmitted: Enrolled at NWACC after not attending the previous semester

High School: Students still enrolled in High School

HEADCOUNT BY MAJORS

FALL SEMESTER

Major	2005	2006	2007	2008	2009
AAS Degrees					
Aviation	11	35	13	31	16
Business Management	271	266	353	442	403
Cert Respiratory Therapist	32	38	16	23	27
Computer Aided Drafting	18	22	19	12	19
Computer Info Systems	101	103	118	118	169
Crime Scene Investigation	2	5	5	2	1
Criminal Justice	77	77	70	88	161
Culinary Arts					1
Early Childhood Education	64	89	129	123	117
Electronics Technology	5	6	8	7	12
EMT-Paramedic	43	39	15	28	45
Environmental Regulations,...	12	17	21	29	27
Fire Science	36	26	16	50	28
Graphic Design	96	86	107	118	133
Homeland Security & Emg Mgmt			11	12	11
Law Enforcement Adm	2	-	4	1	2
Nursing	419	307	173	131	169
Paralegal	36	49	49	55	65
Physical Therapy Assistant	67	28	12	24	23
TOTAL AAS	1,292	1,193	1,139	1,294	1,429
General Studies					
Associate Certificate		397	808	905	1,088
			3		4
TOTAL General Studies		397	811	905	1,092
Transfer Degrees					
AA	831	755	822	1060	1040
AS	1,262	1,235	1,411	1,496	1,560
Agricultural, Life Science	3	2	1	7	16
AAT	9	16	99	177	219
TOTAL Transfer Degrees	2,105	2,008	2,333	2,740	2,835
Technical Certificates					
Business Management					1
Aviation Maint Airframe			3	3	1
Aviation Maint Powerplant				1	
Dental Assisting					19
EMT-Paramedic Cert	11		2	4	13
Environmental Reg Science				2	3
Hospitality Management			3	19	74
Law Enforcement Adm		1	3		1
Logistic Management					3
Marketing Analyst*	2	-	-		
Paraeducators of Spec Needs Le	3		2	1	1
Certificates of Proficiency					
Aviation Management	1		1		
Aviation Maintenance				1	
CAD	44	44	48	49	63
CDA Training			4	2	20
Early Childhood Development	4	5	10	10	
EMT Basic	29	14	8	15	27
Forensic Science					1
Health & Safety		2	1	1	2
Homeland Security & Emg Mgmt				2	1
Hospitality Management		13	13	7	10
Law Enforcement Adm	1				
Retail Management					1
Tax Specialist				12	13
TOTAL Certificates	95	79	98	129	254
Undeclared	1,261	1,229	1,219	317	533
Non-degree seeking	714	826	870	1,831	1,863
TOTAL	5,467	5,732	6,470	7,216	8,006

*Major discontinued

Note: Associate of General Studies majors include students working toward (but not admitted to) selective admissions programs such as Nursing.

2008 Non-degree seeking - increase caused better data and programming to reflect student's actual intent

HEADCOUNT BY RACE/ETHNICITY

FALL SEMESTER

Fall	Asian or Pacific Islander			Black (Non-Hispanic origin)			Hispanic			American Indian or Alaska Native			White (Non-Hispanic Origin)			Unknown			Total
	Total	% of Total	% Change	Total	% of Total	% Change	Total	% of Total	% Change	Total	% of Total	% Change	Total	% of Total	% Change	Total	% of Total	% Change	
2004	128	2.4%	7.6%	75	1.4%	29.3%	385	7.3%	21.8%	82	1.6%	-8.9%	4,429	84.1%	5.5%	167	3.2%	24.6%	5,266
2005	173	3.2%	35.2%	81	1.5%	8.0%	421	7.7%	9.4%	92	1.7%	12.2%	4,537	83.0%	2.4%	163	3.0%	-2.4%	5,467
2006	195	3.4%	12.7%	104	1.8%	28.4%	486	8.5%	15.4%	102	1.8%	10.9%	4,730	82.5%	4.3%	115	2.0%	-29.4%	5,732
2007	247	3.8%	26.7%	118	1.8%	13.5%	645	10.0%	32.7%	99	1.5%	-2.9%	5,167	79.9%	9.2%	194	3.0%	68.7%	6,470
2008	274	3.8%	10.9%	165	2.3%	39.8%	765	10.6%	18.6%	121	1.7%	22.2%	5,575	77.3%	7.9%	316	4.4%	62.9%	7,216

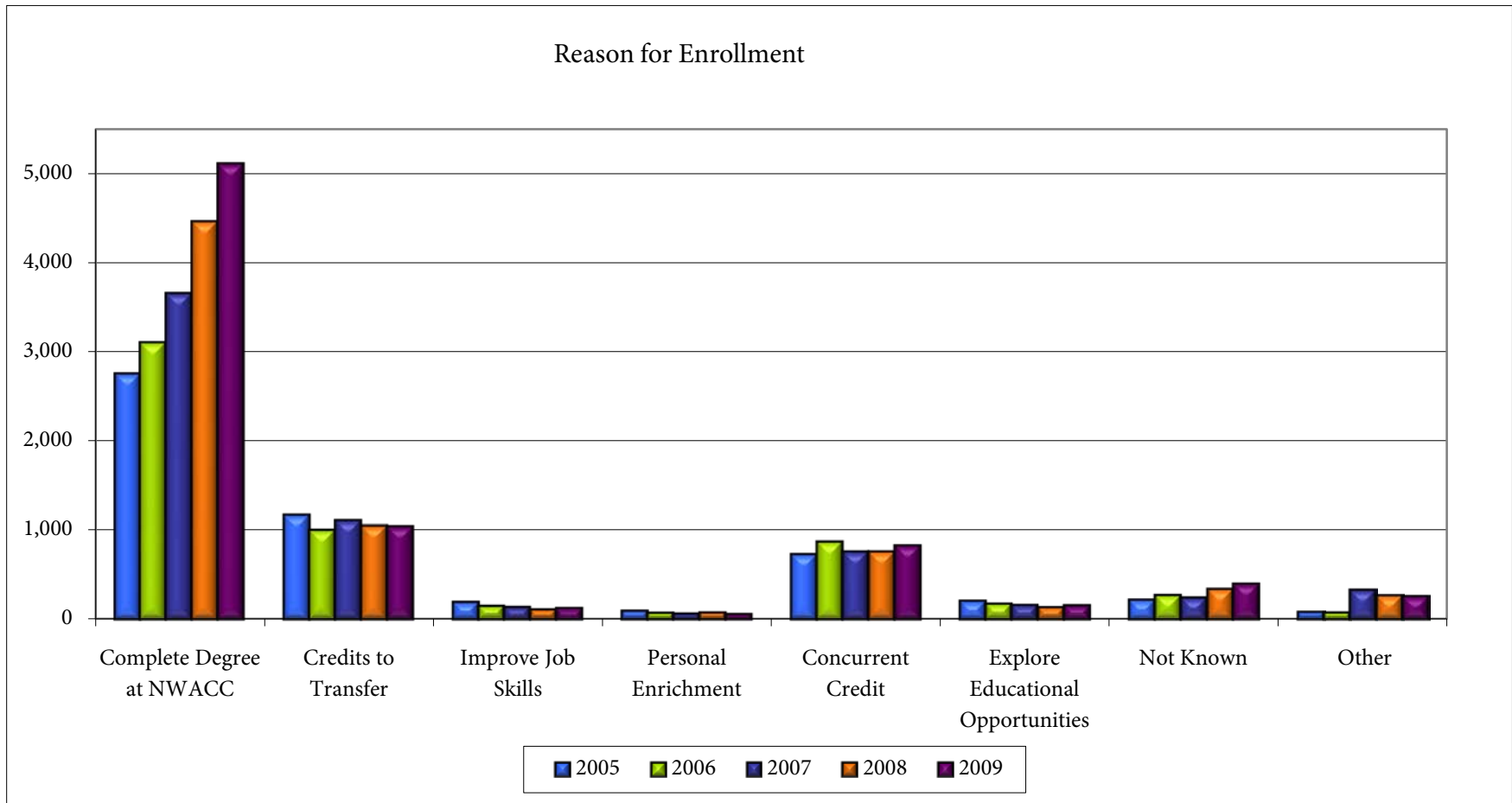
In 2009 the federal government mandated new standards for reporting race and ethnicity in higher education institutions. Under the new standards, students who identify themselves as Hispanic, or as Hispanic and another race, are reported as Hispanic. Students who describe themselves as being of more than one race, other than Hispanic, are now categorized as being of two or more races. In addition, NWACC has begun reporting students on F1, F2 and H4 Visas as non-resident aliens. 2009 is the first year of this reporting method. These new standards are reported for new NWACC students, with continuing students incorporated into the new categories.

Fall	Non-Hispanic Ethnicity																											Total	
	Hispanic or Latino Ethnicity			American Indian or Alaska Native			Asian			Black or African American			Native Hawaiian or Other Pacific Islander			White			2 or more Races			Unknown			Non-Resident Alien				
Total	% of Total	% Change	Total	% of Total	% Change	Total	% of Total	% Change	Total	% of Total	% Change	Total	% of Total	% Change	Total	% of Total	% Change	Total	% of Total	% Change	Total	% of Total	% Change	Total	% of Total	% Change	Total	% of Total	% Change
2009	868	10.8%	-	159	2.0%	-	229	2.9%	-	175	2.2%	-	16	0.2%	-	6,261	78.2%	-	12	0.1%	-	189	2.4%	-	97	1.2%	-	8,006	

REASON FOR ENROLLMENT AT TIME OF ADMISSION

FALL SEMESTER

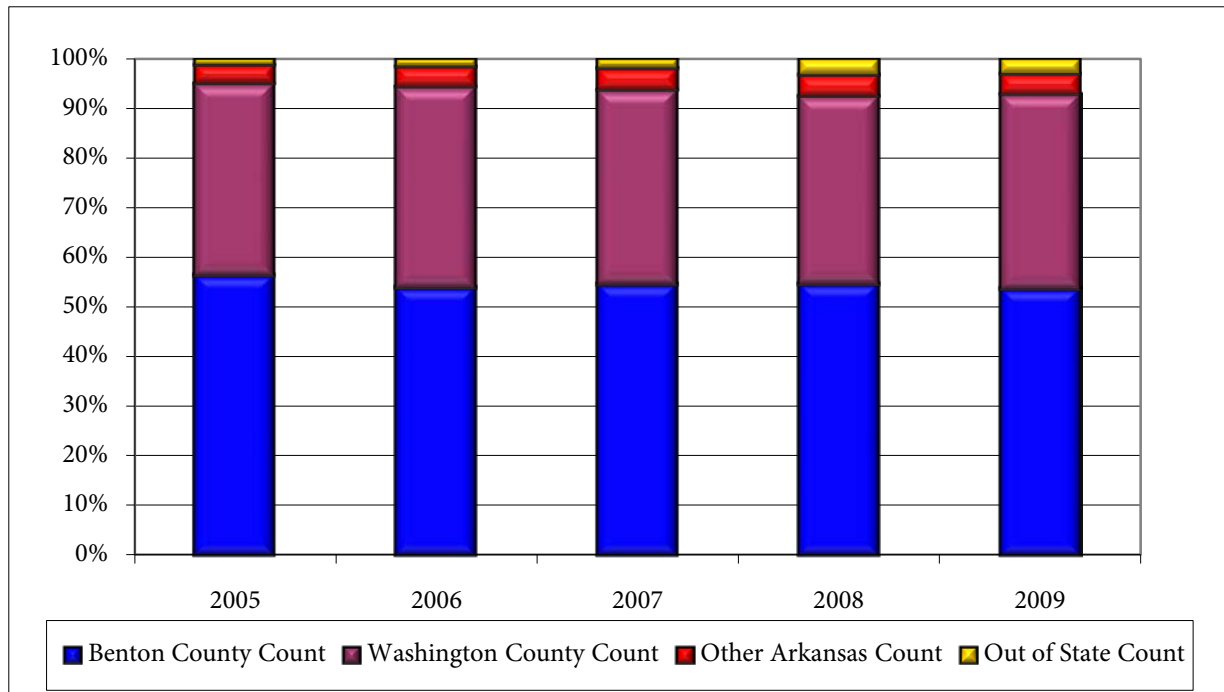
Fall	Complete Degree at NWACC	Credits to Transfer	Improve Job Skills	Personal Enrichment	Concurrent Credit	Explore Educational Opportunities	Not Known	Other	Total Students
2005	2,746	1,174	199	99	731	211	221	86	5,467
2006	3,099	1,000	155	77	868	178	276	79	5,732
2007	3,649	1,108	142	66	762	162	248	333	6,470
2008	4,452	1,053	113	79	764	140	343	272	7,216
2009	5,109	1,047	130	61	832	161	402	264	8,006



HEADCOUNT BY COUNTY OF RESIDENCY

FALL SEMESTER

Fall	Benton County		Washington County		Other Arkansas		Out of State		Total
	Count	% of Total	Count	% of Total	Count	% of Total	Count	% of Total	
2004	3,020	57.3%	2,023	38.4%	175	3.3%	48	0.9%	5,266
2005	3,084	56.4%	2,108	38.6%	204	3.7%	71	1.3%	5,467
2006	3,092	53.9%	2,317	40.4%	230	4.0%	93	1.6%	5,732
2007	3,532	54.6%	2,531	39.1%	283	4.4%	124	1.9%	6,470
2008	3,943	54.6%	2,730	37.8%	312	4.3%	231	3.2%	7,216
2009	4,295	53.6%	3,137	39.2%	335	4.2%	239	3.0%	8,006



WASHINGTON COUNTY FACILITIES ENROLLMENT

CREDIT COURSES

Term	Fall 2005		Fall 2006		Fall 2007		Fall 2008		Fall 2009	
	Count	% of Total	Count	% of Total	Count	% of Total	Count	% of Total	Count	% of Total
Headcount	654	12.0%	1,009	17.6%	1,175	18.2%	1,185	16.4%	1,348	
Females	362	55.4%	609	60.4%	669	56.9%	695	58.6%	617	45.8%
Males	292	44.6%	400	39.6%	506	43.1%	490	41.4%	731	54.2%
Enrollment Status										
New Student	215	32.9%	272	27.0%	348	29.6%	324	27.3%	392	29.1%
New Transfer	91	13.9%	162	16.1%	181	15.4%	155	13.1%	214	15.9%
Readmitted	62	9.5%	113	11.2%	124	10.6%	142	12.0%	149	11.1%
Continuing	281	43.0%	353	35.0%	422	35.9%	521	44.0%	571	42.4%
Concurrent	3	0.5%	107	10.6%	98	8.3%	42	3.5%	22	1.6%
Special	2	0.3%	2	0.2%	2	0.2%	1	0.1%	0	0.0%
County of Residence										
Washington	456	69.7%	780	77.3%	914	77.8%	918	77.5%	1024	76.0%
Benton	164	25.1%	175	17.3%	194	16.5%	195	16.5%	210	15.6%
Madison	9	1.4%	14	1.4%	17	1.4%	23	1.9%	33	2.4%
Carroll	3	0.5%	3	0.3%	7	0.6%	10	0.8%	9	0.7%
Other	22	3.4%	37	3.7%	43	3.7%	39	3.3%	72	5.3%
Enrolled in only Washington County*	149		424		456		438		396	

Washington County Facilities:

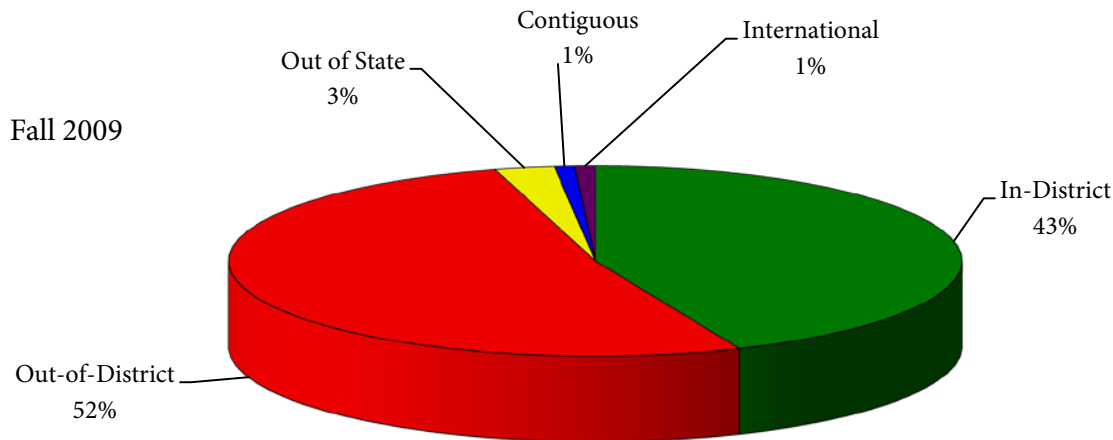
Washington County Center, NTI, RTC, AATC, Washington County Sheriff's Office, Jones Trust Center, Greenland High School
Does not include Step Ahead students taking classes at their respective high schools.

*Fall 2006 increased caused by RTC changing from offering Step Ahead classes to offering regular college credit classes

HEADCOUNT ENROLLMENT BY TUITION STATUS

BY FALL SEMESTER

Fall	In-District		Out-of-District		Out of State		Contiguous		International		Total
	Count	Percent	Count	Percent	Count	Percent	Count	Percent	Count	Percent	
2005	2,438	44.6%	2,894	52.9%	34	0.6%	38	0.7%	63	1.2%	5,467
2006	2,400	41.9%	3,172	55.3%	33	0.6%	57	1.0%	70	1.2%	5,732
2007	2,737	42.3%	3,573	55.2%	44	0.7%	57	0.9%	59	0.9%	6,470
2008	3,141	43.5%	3,690	51.1%	255	3.5%	58	0.8%	72	1.0%	7,216
2009	3,489	43.6%	4,164	52.0%	210	2.6%	71	0.9%	72	0.9%	8,006



Tuition status as defined by the institution:

In-District: Student must live in the Bentonville or Rogers School District for 6 months prior to the first day of classes

Out-of-District: Student must have lived within the State of Arkansas for 6 months prior to the first day of classes

Out-of-state: Student must be a citizen of the United States

International: Student who is not a US citizen or legal resident

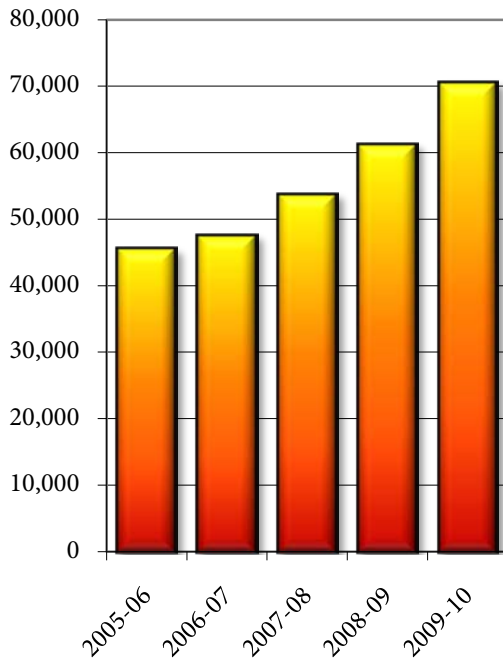
Contiguous: Live in Mo or OK counties that border Benton County

STUDENT SEMESTER CREDIT HOURS

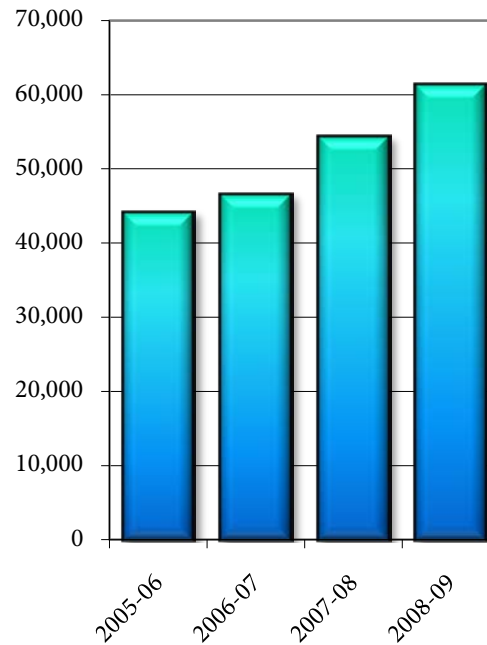
BY SEMESTER

Year	Fall		Spring		Summer		
	SSCH*	Fall to Fall % Change	SSCH*	Sp to Sp % Change	Summer I SSCH	Summer II SSCH	Total Summer % Change
2005-06	45,514	3.3%	44,099	6.1%	6,535	2,887	12.0%
2006-07	47,462	4.3%	46,516	5.5%	7,681	3,248	16.0%
2007-08	53,701	13.1%	54,293	16.7%	9,398	4,151	24.0%
2008-09	61,230	14.0%	61,300	12.9%	11,062	5,327	21.0%
2009-10	70,503	15.1%					

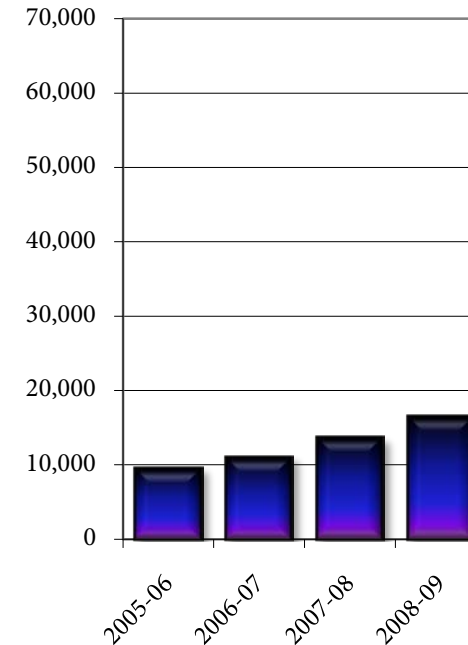
Fall SSCH



Spring SSCH



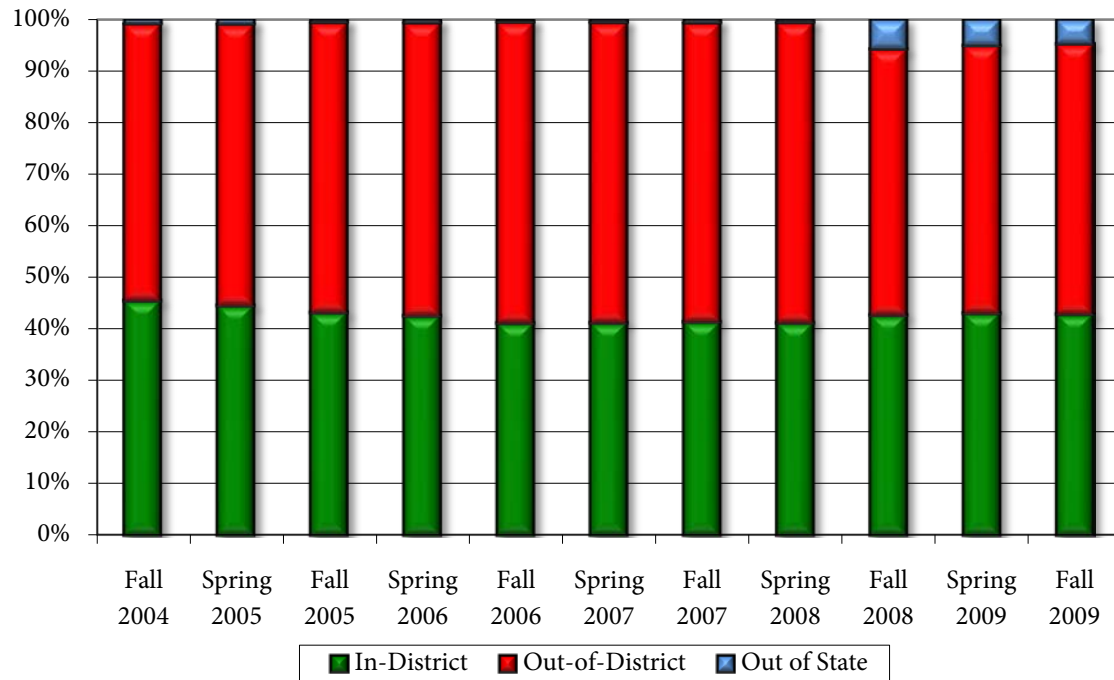
Summer SSCH



*Fall and Spring off-schedule classes (such as Late Start and second 8-week) are not included to more accurately compare between semesters

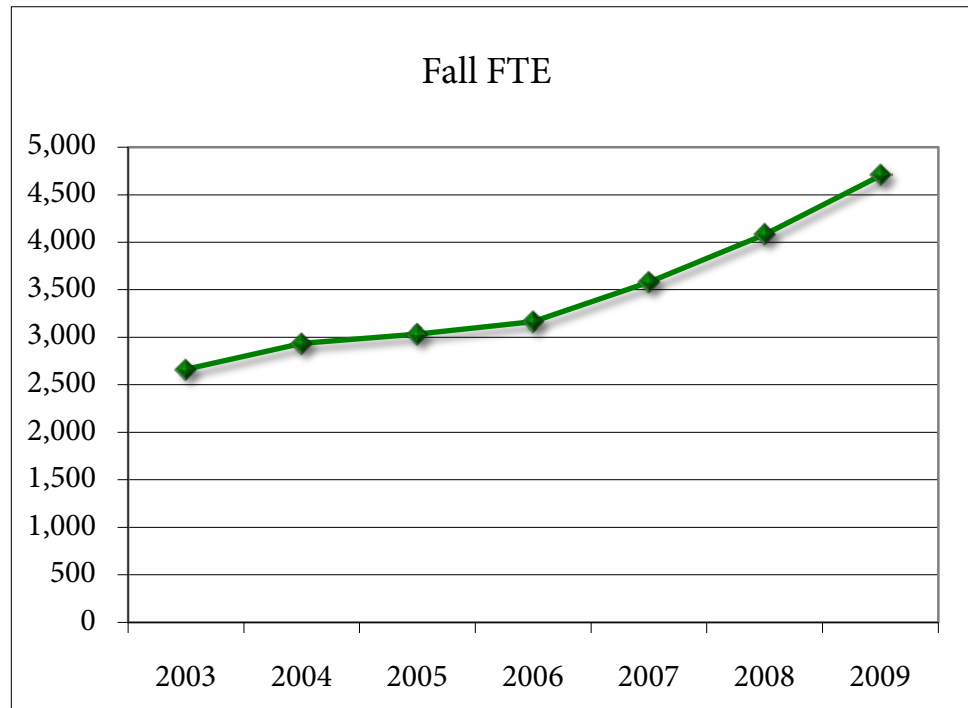
STUDENT SEMESTER CREDIT HOURS BY TUITION STATUS

Term	In-District		Out-of-District		Out of State		Total SSCH
	Count	Percent	Count	Percent	Count	Percent	
Fall 2004	20,002	45.4%	23,679	53.7%	378	0.9%	44,059
Spring 2005	18,501	44.5%	22,703	54.6%	373	0.9%	41,577
Fall 2005	19,623	43.1%	25,610	56.3%	281	0.6%	45,514
Spring 2006	18,743	42.5%	25,051	56.8%	305	0.7%	44,099
Fall 2006	19,485	41.1%	27,724	58.4%	253	0.5%	47,462
Spring 2007	19,126	41.1%	27,107	58.3%	283	0.6%	46,516
Fall 2007	22,192	41.3%	31,139	58.0%	370	0.7%	53,701
Spring 2008	22,318	41.1%	31,640	58.3%	335	0.6%	54,293
Fall 2008	26,100	42.6%	31,625	51.6%	3,505	5.7%	61,230
Spring 2009	26,355	43.0%	31,891	52.0%	3,054	5.0%	61,300
Fall 2009	30,169	42.8%	36,998	52.5%	3,336	4.7%	70,503



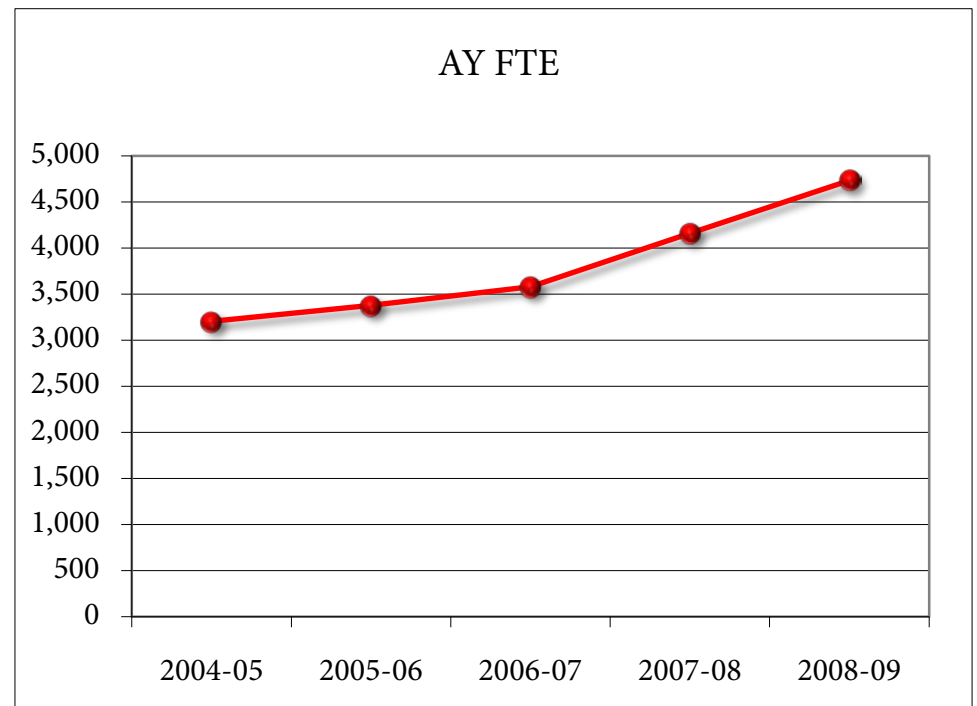
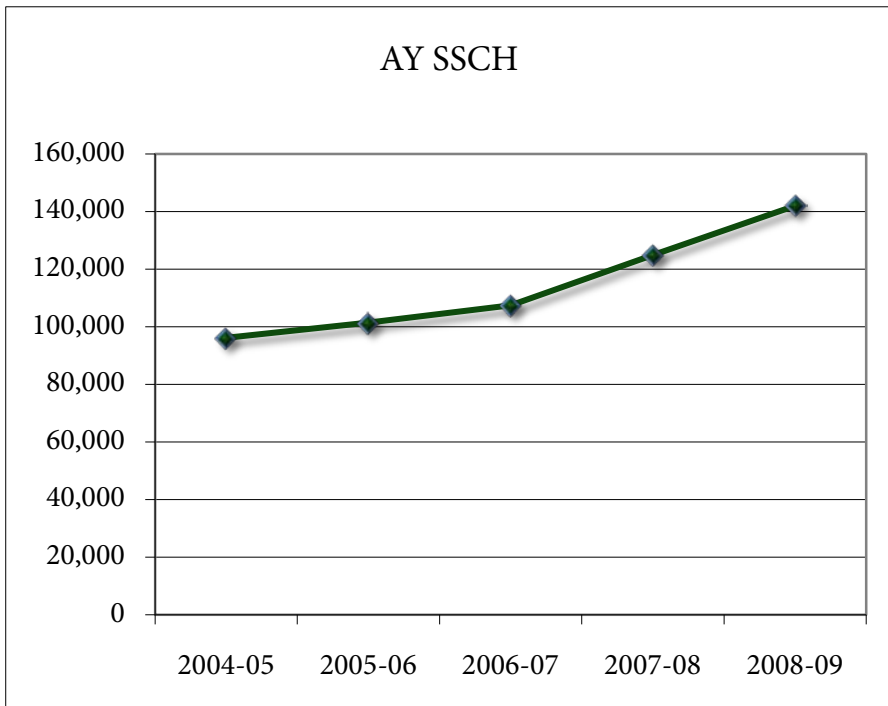
STUDENT SEMESTER CREDIT HOUR (SSCH) AND FULL TIME EQUIVALENT (FTE) BY FALL SEMESTER

Fall	Fall SSCH	Total FTE	% Change FTE
2003	39,948	2,663	5.2%
2004	44,059	2,937	10.3%
2005	45,514	3,034	3.3%
2006	47,462	3,164	4.3%
2007	53,701	3,580	13.1%
2008	61,230	4,082	14.0%
2009	70,503	4,700	15.1%



ANNUAL STUDENT SEMESTER CREDIT HOUR (SSCH) AND FULL TIME EQUIVALENT (FTE) BY ACADEMIC YEAR AND LOCATION TAUGHT

Academic Year	In-District SSCH	Out-District SSCH	Distance Learning SSCH	Total SSCH	Total FTE	% Change FTE
2004-05	82,053	8,288	5,787	96,128	3,204	9.9%
2005-06	82,626	9,360	9,368	101,354	3,378	5.4%
2006-07	82,213	13,022	12,160	107,395	3,580	6.0%
2007-08	88,825	12,928	23,062	124,815	4,161	16.2%
2008-09	99,408	15,771	26,799	141,978	4,733	13.8%



Includes all credit hours (on-schedule and off-schedule) for reporting year

HIGH SCHOOLS IN NWACC SERVICE AREA

Benton County High Schools

High School	2006 Grads	Attended NWACC Fall 2006	% at NWACC Fall 2006	2007 Grads	Attended NWACC Fall 2007	% at NWACC Fall 2007	2008 Grads	Attended NWACC Fall 2008	% at NWACC Fall 2008	2009 Grads	Attended NWACC Fall 2009	% at NWACC Fall 2009
Bentonville	400	96	24.00%	512	104	20.31%	607	144	23.72%	648	134	20.68%
Decatur	40	4	10.00%	41	5	12.20%	40	3	7.50%	33	6	18.18%
Gentry	86	12	13.95%	79	10	12.66%	91	14	15.38%	87	12	13.79%
Gravette	90	16	17.78%	102	14	13.73%	119	13	10.92%	102	18	17.65%
Pea Ridge	79	13	16.46%	83	17	20.48%	84	17	20.24%	83	17	20.48%
Rogers	691	147	21.27%	700	161	23.00%	689	157	22.79%	756	154	20.37%
Siloam Springs	224	25	11.16%	239	40	16.74%	238	30	12.61%	228	22	9.65%
Totals from Benton County High Schools	1,610	313	19.44%	1,756	351	19.99%	1,868	378	20.24%	1,937	363	18.74%

Washington County High Schools

High School	2006 Grads	Attended NWACC Fall 2006	% at NWACC Fall 2006	2007 Grads	Attended NWACC Fall 2007	% at NWACC Fall 2007	2008 Grads	Attended NWACC Fall 2008	% at NWACC Fall 2008	2009 Grads	Attended NWACC Fall 2009	% at NWACC Fall 2009
Elkins	62	0	0.00%	58	11	18.97%	66	21	31.82%	65	9	13.85%
Farmington	108	18	16.67%	124	18	14.52%	122	11	9.02%	120	22	18.33%
Fayetteville	546	43	7.88%	538	58	10.78%	570	57	10.00%	512	63	12.30%
Greenland	57	16	28.07%	71	10	14.08%	62	4	6.45%	59	6	10.17%
Lincoln	65	6	9.23%	95	8	8.42%	91	15	16.48%	90	9	10.00%
Regional Tech Ctr*		4			2			2			1	
Prairie Grove	88	9	10.23%	120	14	11.67%	112	17	15.18%	108	20	18.52%
Springdale Har-Ber*	47	11	23.40%	158	34	21.52%	422	81	19.19%	396	67	16.92%
Springdale High	665	116	17.44%	655	124	18.93%	371	86	23.18%	426	83	19.48%
West Fork	83	8	9.64%	92	10	10.87%	87	10	11.49%	92	5	5.43%
Totals from Washington County High Schools	1,721	231	13.42%	1,911	289	15.12%	1,903	304	15.97%	1,868	285	15.26%

Source: Telephone survey of High Schools and ADHE database

*Began 2005-06

EARLY COLLEGE EXPERIENCE

HIGH SCHOOL BASED CLASSES (PREVIOUSLY STEP AHEAD)

NWACC works as a partner with local high schools to offer students the opportunity to take college credit courses and experience the rigors of college study in their own schools prior to graduation.

Headcount by High School

School	Fall 2006	Spring 2007	Fall 2007	Spring 2008	Fall 2008	Spring 2009	Fall 2009	% Growth Fall 2006-09
Ambassadors for Christ Aca	9	8	11	11	18	18	12	
Bentonville	109	105	125	119	137	123	107	
Decatur	-	-	-	-	-	-	2	
Farmington	-	-	-	-	-	-	21	
Fayetteville East	0	0	0	0	35	21	45	
Gentry	11	12	27	22	18	16	26	
Gravette	33	31	20	21	23	24	21	
Greenland	-	-	-	-	-	-	13	
Lincoln	-	27	34	24	18	15	13	
Pea Ridge	10	10	19	19	33	30	-	
Prairie Grove	8	8	9	11	11	11	17	
Rogers Heritage*	-	-	-	-	-	-	70	
Rogers*	118	121	143	142	189	191	138	
Shiloh Christian	66	65	73	73	91	93	96	
Siloam Springs	8	7	31	12	27	17	27	
Springdale	105	103	28	24	28	28	25	
Springdale Har-Ber	31	27	50	46	36	34	70	
West Fork	-	-	-	-	-	-	18	
TOTAL	508	524	570	524	664	621	721	42%

Student Semester Credit Hours/Sections by High School

School	Fall 2006		Spring 2007		Fall 2007		Spring 2008		Fall 2008		Spring 2009		Fall 2009		% Growth Fall 2006-09
	SSCH	Sections	SSCH	Sections	SSCH	Sections	SSCH	Sections	SSCH	Sections	SSCH	Sections	SSCH	Sections	
Ambassadors for Christ Aca	33	2	24	1	33	2	33	2	112	3	81	3	36	2	
Bentonville	488	6	399	6	587	7	480	7	662	8	474	9	473	5	
Decatur	-	-	-	-	-	-	-	-	-	-	-	-	14	2	
Farmington	-	-	-	-	-	-	-	-	-	-	-	-	98	2	
Fayetteville E.	0	0	0	0	0	0	0	0	165	2	63	2	185	3	
Gentry	33	1	33	1	124	3	93	3	81	2	63	3	138	3	
Gravette	96	1	93	1	60	1	63	1	69	1	72	1	63	1	
Greenland	-	-	-	-	-	-	-	-	-	-	-	-	68	2	
Lincoln	168	4	105	3	121	3	72	2	54	1	45	3	39	1	
Pea Ridge	30	1	30	1	57	1	57	2	179	4	93	4			
Prairie Grove	24	1	24	1	30	1	36	3	36	1	33	1	51	1	
Rogers Heritage	-	-	-	-	-	-	-	-	-	-	3	1	299	5	
Rogers	538	6	485	7	670	8	565	9	752	8	701	11	618	7	
Shiloh Christian	308	2	276	3	353	5	318	7	386	4	417	7	423	7	
Siloam Springs	24	1	21	1	123	2	39	2	117	2	51	2	105	2	
Springdale	496	5	402	5	135	2	103	2	128	2	99	3	92	2	
Springdale Har-Ber	127	2	99	2	217	3	165	2	147	2	117	2	269	4	
West Fork	-	-	-	-	-	-	-	-	-	-	-	-	57	2	
TOTAL	2,365	32	1,991	32	2,510	38	2,024	42	2,888	40	2,312	52	3,028	51	5%

*Rogers High School split in Fall 2008. Rogers Heritage began offering ECE courses in Fall 2009

*Students attending RTC are coded as 'concurrent' students and not Step Ahead beginning Fall 2006

EARLY COLLEGE EXPERIENCE

CAREER AND TECHNICAL ENROLLMENTS

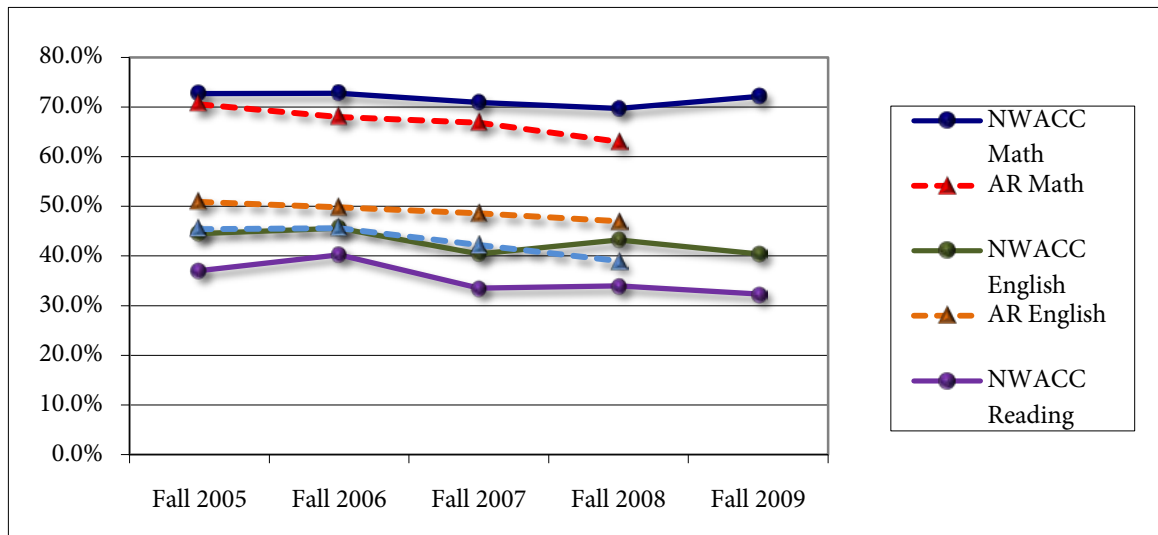
Program	Spring 2006	Fall 2006	Spring 2007	Fall 2007	Spring 2008	Fall 2008	Spring 2009	Fall 2009
Auto Technology						11	10	22
Auto Collision Repair	26	32	38	36	36	8	8	16
Cosmetology	25	47	41	43	41	82	85	110
Criminal Justice	26	36	32	38	31	22	22	34
Culinary Arts	10	30	34	27	31	31	29	21
Dental					12	6	8	14
Medical Professions	37	65	62	62	44	19	24	19
Welding	20	39	35	19	16	16	15	NA
Discontinued Programs*	70	87	100	56	42			
Total Enrollment	214	336	342	281	253	195	201	236

Notes:

- Regional Technology Center was renamed Early College Experience, Career and Technical program in Fall 2009.
 - The following program locations moves occurred
 - o Culinary moved from Fayetteville to NWA Non-Profit Center in Rogers in Fall 2009
 - o Criminal Justice was moved to Rogers Annex in fall 2008 with an additional program opening as Siloam Springs High School in Fall 2009
 - o Automotive collision repair was moved to NTI in Springdale in Fall 2009
 - o Welding was suspended in Fall 2009
 - In Fall 2009, two students were enrolled in both medical professions and dental assisting classes and are counted twice
 - In Fall 2008, NWACC entered into partnership with NTI to offer Automotive Service Technology causing a decrease in enrollment for Automotive Collision Repair
- *Discontinued programs include Aviation, Early Childhood, Engineering, Printing, Computer Networking and Repair

FIRST TIME FRESHMEN* REQUIRING REMEDIATED COURSE WORK

	Fall 2005		Fall 2006		Fall 2007		Fall 2008		Fall 2009	
Number of First-time Students-NWACC	1,029		1,051		1,299		1,340		1,450	
Number of First-time Students - all AR 2-year	8,911		8,497		9,434		9,453		n/a	
MATH										
**Number Required Remediation-NWACC	748	72.7%	765	72.8%	921	70.9%	934	69.7%	1,046	72.1%
All AR 2-year	4,597	70.5%	4,256	68.0%	4,711	66.8%	4,469	63.0%	n/a	n/a
ENGLISH										
**Number Required Remediation-NWACC	458	44.5%	479	45.6%	526	40.5%	579	43.2%	586	40.4%
All AR 2-year	3,315	50.9%	3,122	49.8%	3,426	48.6%	3,341	47.0%	n/a	n/a
READING										
**Number Required Remediation-NWACC	381	37.0%	423	40.2%	436	33.6%	455	34.0%	469	32.3%
All AR 2-year	2,958	45.4%	2,858	45.6%	2,977	42.2%	2,791	39.0%	n/a	n/a



*First time Freshmen are students who have never attended college before - not all were tested.

**The number of first-time students who took and did not meet the Freshmen Assessment and Placement Standards

(ACT 1052) on the ACT, SAT, ASSET, COMPASS exams established by the Arkansas Higher Education Coordinating Board and have been assigned to remediation.

AVERAGE ACT COMPOSITE SCORES

Fall Term	ACT Composite Score Intervals						Total First-time Freshmen with ACT Scores	Average ACT Composite Score	Arkansas State Average for High School	US Average for High School Students
	1 to 6	7 to 12	13 to 18	19 to 24	25 to 30	31 to 36				
NWACC Scores for First-Time Freshmen										
2004	0	3	221	295	52	1	572	19.7	20.1	20.9
2005	0	5	194	305	50	0	554	19.9	20.3	20.9
2006	0	4	221	305	55	1	586	19.8	20.6	21.1
2007	0	6	221	386	76	2	691	20.2	20.5	21.2
2008	0	5	218	412	75	2	712	20.2	20.8	21.1
2009	0	2	226	416	91	1	736	20.4	20.6	21.1

Arkansas Two-Year Colleges Scores for First-Time Freshmen										
2004	1	66	1370	1584	240	5	3,266	19.2		
2005	0	55	1182	1547	253	4	3,041	19.4		
2006	0	58	1115	1585	265	5	3,028	19.6		
2007	1	73	1256	1797	312	4	3,443	19.5		
2008	0	43	1213	1929	299	9	3,493	19.7		

Average composite scores for Arkansas and U.S. provided by ACT and is based on all students taking the ACT exam.

*NOTE: In 2003 numbers were revised due to WestArk becoming 4-year institution

RETENTION RATES FOR FULL-TIME, FIRST-TIME FRESHMAN

Historical Retention Rates for Full-Time, First-Time Freshman

Fall	Co-hort Size	Fall to Fall Retention After:																				Cohort Success
		First Year				Second Year				Third Year				Fourth Year				Fifth Year				
		Native	Transfer	% First Year Retention	% Grad	Native	Transfer	% Annual Retention	% Grad	Native	Transfer	% Annual Retention	% Grad	Native	Transfer	% Annual Retention	% Grad	Native	Transfer	% Annual Retention	% Grad	
NWACC																						
2000	375	57.3%	1.8%	61.6%	0.5	37.9%	7.2%	45.1%	3.5	18.1%	10.7%	28.8%	10.1	10.1%	12.0%	22.1%	14.9	6.9%	9.3%	16.3%	19.2%	35.5%
2001	433	56.4%	6.2%	62.6%	0.0	31.2%	15.7%	46.9%	3.9	19.2%	17.1%	36.3%	8.8	9.7%	17.1%	26.8%	13.4	6.2%	9.7%	15.9%	21.0%	37.0%
2002	411	56.8%	4.4%	61.2%	0.5	32.9%	10.7%	43.7%	1.7	16.6%	13.9%	30.5%	5.4	12.4%	12.4%	24.9%	9.5	7.8%	10.2%	18.0%	16.1%	34.1%
2003	465	58.3%	6.0%	64.3%	0.0	36.3%	12.5%	48.8%	1.1	20.9%	14.4%	35.3%	7.5	13.1%	12.0%	25.2%	13.1	8.2%	9.7%	17.8%	19.1%	37.0%
2004	511	56.6%	3.9%	60.5%	0.4	33.7%	9.0%	42.7%	2.3	21.7%	13.1%	34.8%	6.1	12.9%	10.0%	22.9%	16.0					
2005	516	51.7%	5.4%	57.2%	0.6	35.5%	8.1%	43.6%	1.9	20.3%	10.9%	31.2%	8.7									
2006	552	56.7%	3.8%	60.5%	0.7	33.5%	10.1%	43.7%	3.1													
2007	656	55.5%	4.3%	59.8%	0.8																	
2008	668	(Available Spring 2010)																				
2009	797																					
All Arkansas Public Two-Year Colleges*																						
2000	4,688	49.2%	6.2%	55.4%	2.9	26.8%	9.5%	36.3%	9.9	12.3%	10.0%	22.3%	19.1	6.9%	8.7%	15.6%	24.0	5.4%	6.5%	11.9%	28.0	39.9%
2001	5,336	51.4%	5.2%	56.7%	3.2	25.9%	9.6%	35.5%	12.5	11.9%	10.2%	22.1%	21.6	6.9%	8.2%	15.0%	26.9	5.0%	5.2%	10.2%	31.2	41.5%
2002	5,726	49.6%	5.7%	55.4%	2.9	26.7%	8.6%	35.3%	10.2	12.7%	9.2%	21.8%	19.1	7.4%	7.6%	15.0%	24.4	5.2%	5.5%	10.8%	28.2	39.0%
2003	6,107	48.0%	5.2%	53.2%	5.3	25.2%	8.4%	33.6%	12.7	12.4%	8.1%	20.5%	20.8	7.3%	7.5%	14.8%	26.0	4.5%	5.2%	9.8%	29.9	39.6%
2004	6,059	48.8%	5.2%	54.0%	4.9	25.7%	8.7%	34.4%	12.0	12.6%	8.6%	21.2%	21.2	7.5%	7.1%	14.6%	26.3					
2005	6,179	46.9%	5.4%	52.3%	4.8	25.2%	7.9%	33.1%	12.9	11.9%	8.3%	20.2%	21.5									
2006	5,828	48.0%	5.2%	53.2%	4.9	24.6%	9.0%	33.6%	13.6													
2007	6,678	49.4%	4.6%	54.0%	5.7																	
2008	6,594	(Available Spring 2010)																				

*NOTE: Numbers were revised due to WestArk becoming 4-year institution

Note: Cohorts = First-time, full-time students

Natives = Students continuing to enroll in original institution

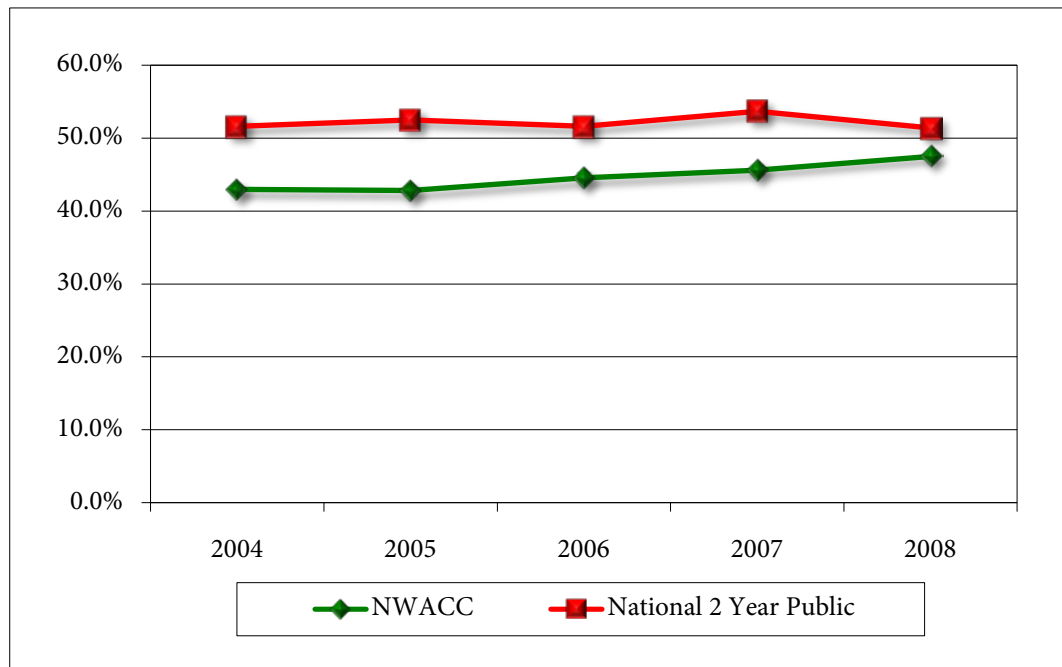
Transfers = Students continuing to enroll in an institution other than original college/university

% Annual Retention = Proportion of the cohort that continues to be enrolled in a given year at original institution or at a transfer institution

% Graduated = Proportion of the cohort that has received a degree or certificate at original institution or at a transfer institution

RETENTION RATES - ALL STUDENTS

Fall	Headcount*	Returned the Next Fall	% Retention	National Public 2-Year College % Retention**
2004	4,462	1,917	43.0%	51.6%
2005	4,617	1,977	42.8%	52.5%
2006	4,744	2,113	44.5%	51.6%
2007	5,404	2,465	45.6%	53.7%
2008	6,057	2,878	47.5%	51.4%



*Headcount without high school students or those students that graduated in the Academic Year

**Source: ACT, Inc. - National First to Second Year Retention Rates

FINANCIAL AID - BY FISCAL YEAR

	Students						Dollars					
	FY 05	FY 06	FY 07	FY 08	FY 09	Percent Increase	FY 05	FY 06	FY 07	FY 08	FY 09	Percent Increase
Federal Grants	1,245	1,372	1,473	1,882	2,385	26.7%	\$2,546,346	\$2,750,188	\$2,966,832	\$3,941,670	\$5,598,076	42.0%
State Grants & Scholarships	116	298	242	280	325	16.1%	\$144,419	\$380,269	\$377,567	\$391,358	\$474,703	21.3%
Institutional Scholarships	97	129	101	97	89	-8.2%	\$61,581	\$75,933	\$73,868	\$75,206	\$76,264	1.4%
Work Study	52	61	69	72	81	12.5%	\$157,268	\$151,448	\$151,597	\$175,012	\$184,675	5.5%
Federal Stafford Loans	909	1,190	1,291	1,513	2,005	32.5%	\$4,088,933	\$5,785,067	\$6,040,998	\$8,124,326	\$13,746,034	69.2%
TOTAL Awards	2,419	3,050	3,176	3,844	4,885	27.1%	\$6,998,547	\$9,142,905	\$9,610,862	\$12,707,572	\$20,079,752	58.0%
Average Amount Awarded							\$2,893	\$2,998	\$3,026	\$3,306	\$4,110	24.3%
# Students (Unduplicated)	1,269	1,318	1,617	2,282	3,404	49.2%						
% Students Receiving Aid	26%	23%	25%	35%	47%	34.0%						

Types of Financial Aid Available to NWACC Students

Federal Aid Programs

Pell Grants
 Supplemental Educational
 Opportunity Grants (SEOG)
 Stafford Student Loan
 (Subsidized and unsubsidized)
 Work Study
 Academic Competiveness Grant

State Programs

Arkansas Academic Challenge Scholarships
 Arkansas Workforce Improvement Grant
 Governor's Scholarship
 Law Enforcement Assistance Program
 Law Enforcement Officers Dependent Program
 Second Effort Scholarship
 GO! Opportunities Grant
 State Teacher Assistance Resource Program (STAR)

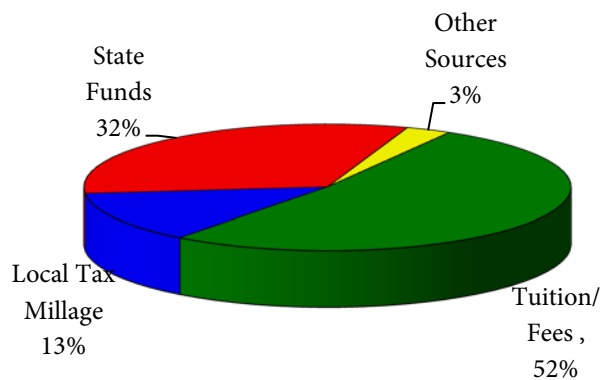
Institutional Scholarships

Over 40 institutional scholarships including the President & Trustee Scholarships

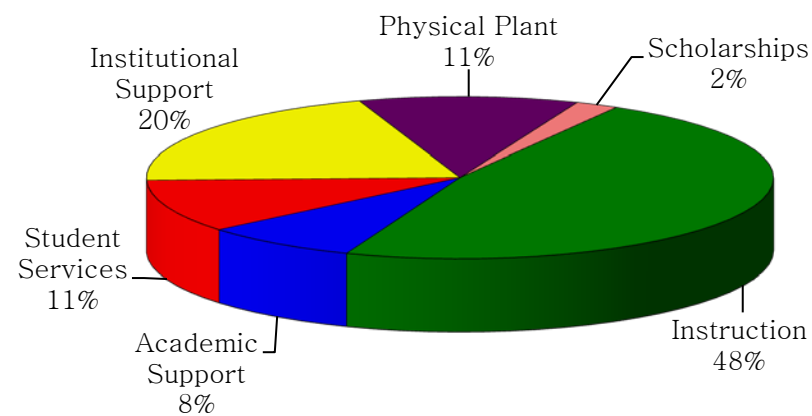
FINANCIAL REPORT SUMMARY

	FY06	FY07	FY08	FY09	FY10
Beginning Year Balance	\$1.60	\$1.77	\$1.56	\$1.68	\$1.91
Budgeted Operating Revenue	<u>\$21.8</u>	<u>\$26.2</u>	<u>\$28.1</u>	<u>\$30.5</u>	<u>\$34.4</u>
Tuition/Fees	\$10.5	\$12.64	\$12.22	\$13.95	\$18.01
Local Tax Millage	\$3.1	\$3.44	\$3.90	\$3.90	\$4.50
State Funds	\$7.8	\$8.88	\$10.74	\$10.74	\$10.86
Other Sources	\$0.4	\$1.27	\$1.24	\$1.92	\$0.98
Budgeted Operating Expenses	<u>\$22.1</u>	<u>\$26.23</u>	<u>\$27.99</u>	<u>\$30.29</u>	<u>\$33.74</u>
Instruction	\$11.4	\$12.88	\$13.36	\$14.30	\$16.04
Academic Support		\$2.33	\$2.24	\$2.71	\$2.71
Student Services	\$2.8	\$2.63	\$2.93	\$3.38	\$3.57
Institutional Support	\$5.3	\$4.88	\$5.45	\$5.71	\$6.85
Physical Plant	\$2.6	\$3.02	\$3.58	\$3.63	\$3.82
Scholarships		\$0.49	\$0.43	\$0.56	\$0.75
Ending Year Balance	\$1.3	\$1.77	\$1.68	\$1.91	\$2.54

Budgeted Operating Revenue



Budgeted Operating Expenses



\$ in millions

SUMMARY OF STUDENTS SERVED

Academic Year

Unduplicated headcounts

Academic Year	Credit Students	Corporate Learning Students	Community Education Students	Adult Education Students	Regional Technical Center	Kid's Enrichment	Grand Total
2001-02	6,372	1,911	3,532	2,491	-		14,306
2002-03	7,011	4,263	884	2,050	-		14,208
2003-04	7,183	3,633	1,167	2,139	-		14,122
2004-05	7,792	2,917	1,347	2,837	-		14,893
2005-06	8,217	2,725	1,404	2,885	-		15,231
2006-07	8,695	1,915	1,152	3,694	340	250	16,046
2007-08	9,839	2,530	899	3,615	267	246	17,396
2008-09	10,826	1,587	922	3,322	234	46	16,937

GLOSSARY

Academic Year

NWACC Academic Year is July 1 - June 30, comprised of Summer II, Fall, Spring, Summer I semesters.

ADHE

This is an acronym for the Arkansas Department of Higher Education. The ADHE has the authority to review, approve or discontinue degree programs at public colleges or universities.

Budgeted Operating Expense Categories (Source IPEDS website: <http://nces.ed.gov/ipeds/web2000/viewinstruction.asp?instID=299>)

Instruction - academic instruction, occupational and vocational instruction, community education, preparatory and adult basic education, and remedial and tutorial instruction conducted by the teaching faculty for the institution's students.

Academic Support - support services that are an integral part of the institution's primary missions of instruction, research, and public service. Includes expenses for museums, libraries, galleries, audio/visual services, ancillary support, academic administration, personnel development, and course and curriculum development.

Student services — admissions, registrar activities, and activities whose primary purpose is to contribute to students' emotional and physical well-being and to their intellectual, cultural, and social development outside the context of the formal instructional program.

Institutional support — day-to-day operational support of the institution, excluding expenses for physical plant operations. Includes expenses for general administrative services, executive direction and planning, legal and fiscal operations, and public relations/development.

Physical Plant — operations established to provide service and maintenance related to grounds and facilities used for educational and general purposes. Also includes expenses for utilities, fire protection, property insurance, and similar items.

Scholarships - outright grants to students selected and awarded by the institution.

Census Date

The end of the eleventh day of classes in a regular term and the end of the fifth day during each summer term.

CIP Code (Classification of Instructional Programs)

A numerical classification and standard terminology for secondary and postsecondary instructional programs. CIP codes are used by colleges nationally to report various instructional program data to the U. S. Department of Education and other government and higher education organizations.

Concurrent Credit Course

A course for which both high school and college/university credit is awarded to a high school student.

Continuing student

A student previously enrolled during the previous regular academic term at NWACC. Summer sessions are not considered to be a regular academic term.

Credit Hour

A unit of measure representing an hour (50 minutes) of instruction over a 16-week period in a semester. It is applied toward the total number of hours needed for completing the requirements of a degree, diploma, certificate, or other formal award.

Enrollment

A student who is counted on a headcount basis as registered on the census date for the reporting term.

Enrollment Status

A student's current attendance status in a postsecondary education institution. The following mutually exclusive categories are used: first-time entering undergraduate student, entering undergraduate transfer student, continuing student, readmitted student and high school student.

FICE Code

A six-digit identification code originally created by the Federal Interagency Committee on Education (FICE). It is used in IPEDS to identify institutions that are accredited at the college level by an agency recognized by the Secretary, U.S. Department of Education.

Glossary - con't

First-Time Freshman

An entering freshman who has never attended any college. Includes students enrolled in the fall term who attended college for the first time in the prior summer term. Also includes students who entered with advanced standing (college credits earned before graduation from high school).

Fiscal Year

A twelve-month period running from July 1st through the following June 30th.

Full-Time Equivalent (FTE)

A statistic derived from the student credit hour (SSCH) production of an institution. The number of undergraduate FTE students for an academic term is obtained by dividing the total number of undergraduate student semester credit hours by 15. When computing an annual FTE, the student credit hours for all terms is summed and then divided by 30 undergraduate courses.

Full-Time Student

An undergraduate student enrolled for 12 or more semester credit hours in a term.

High School Student

A high school student who has not received a high school diploma or its equivalent but is enrolled in college-level courses.

IPEDS

The Integrated Postsecondary Education Data System conducted by the National Center for Education Statistics. IPEDS began in 1986 and involves annual data collections. Survey questionnaires are sent to all postsecondary institutions eligible for federal student financial aid, as determined by the Office of Postsecondary Education, U.S. Department of Education.

Off-Schedule

Refers to students who are enrolled in courses the first class meeting of which is after the 11th class day for Fall and Spring Semesters (census day). In the case of the summer sessions it is enrollment in courses the first class meeting of which occurs after the 5th class day (census day).

On-Schedule

Refers to students who are enrolled in courses the first class meeting of which is before the 11th class day for Fall and Spring Semesters (census day). In the case of the summer sessions it is enrollment in courses the first class meeting of which occurs before the 5th class day (census day).

Part-Time Student

Students enrolled for 1-11 credit hours.

Readmitted student

A student previously enrolled at NWACC but not enrolled during the regular academic term immediately preceding the current term. Disregards summer session.

Retention and Graduation Rates

Calculated using cohort of first time freshmen. The cohort is typically defined as the first-time full-time freshmen entering in the fall semester. The term "first-time" means that the student was not previously enrolled in a postsecondary institution, and the term "full-time" means that the student enrolled for a minimum of 12 credit hours in the entering semester.

SSCH - (Student Semester Credit Hours)

Credit hours generated by all students in a semester

Transfer Student

An undergraduate student entering NWACC for the first time with academic credit attempted or earned at another institution (whether or not the credit is accepted by NWACC). For reporting purposes, this category includes students enrolled in the fall term, who first enrolled as transfer students in the prior summer term.

Unduplicated Headcount

A student is counted only once during an academic year (Summer I term through Summer II term) regardless of how many terms the student registers for or how many different classes the student takes during that time period.